



Warburton Mountain Bike Destination

A WORLD-CLASS MOUNTAIN BIKE DESTINATION IN THE HEART OF THE YARRA RANGES

We're planning a world-class mountain bike destination in Warburton. The network of trails nestled in the surrounding mountains will bring visitors from around the world to experience Warburton's natural beauty and relaxing village atmosphere. It will also create more jobs and help grow the local economy.

What is the Warburton Mountain Bike Destination?

The Warburton Mountain Bike Destination would:

- Be a world-class mountain bike hub centred around Warburton, 70km east of Melbourne
- Feature 61 trails covering 177km across three areas on Mt Donna Buang, Mt Little Joe and Mt Tugwell
- Connect with the popular Lilydale-Warburton Rail Trail and O'Shannassy Aqueduct Trail
- Have four "trail heads" with facilities for riders, including car parking, picnic areas, toilets and wash stations
- Have a main trail head at Warburton Golf Course, at the base of Mt Donna Buang and the signature 'Drop-a-K' trail - a 1000m vertical descent trail
- Have shuttle buses to take riders to the Mount Donna Buang summit and Mt Tugwell.

We have secured \$11.3m in funding for stage one of the project, which includes around 110km of trails and trail head facilities.

Once finished, we will apply to the International Mountain Bike Association as a Gold-Level Ride Centre. This would make Warburton the only Gold-Level centre in Australia and one of only three outside the USA.

WARBURTON MOUNTAIN BIKE DESTINATION IS MORE THAN A WEEKEND ACTIVITY

Our aim is that the Warburton Mountain Bike Destination will deliver a range of opportunities for the region. Through the project we want to:

- Facilitate tourism growth and associated positive economic and jobs growth in the Yarra Valley region
- Create iconic mountain bike trails eligible for International Mountain Bike Association Gold Ride Centre status
- Create spectacular riding experiences that have a competitive advantage over existing mountain bike trails and make the most of Warburton's beautiful town, valley and surrounding forested slopes
- Enhance the health and wellbeing of the community
- Maintain the significant biodiversity and heritage values within the project area and provide opportunities for the community to connect with and appreciate their importance.

Warburton Mountain Bike Destination

A WORLD-CLASS MOUNTAIN BIKE DESTINATION IN THE HEART OF THE YARRA RANGES

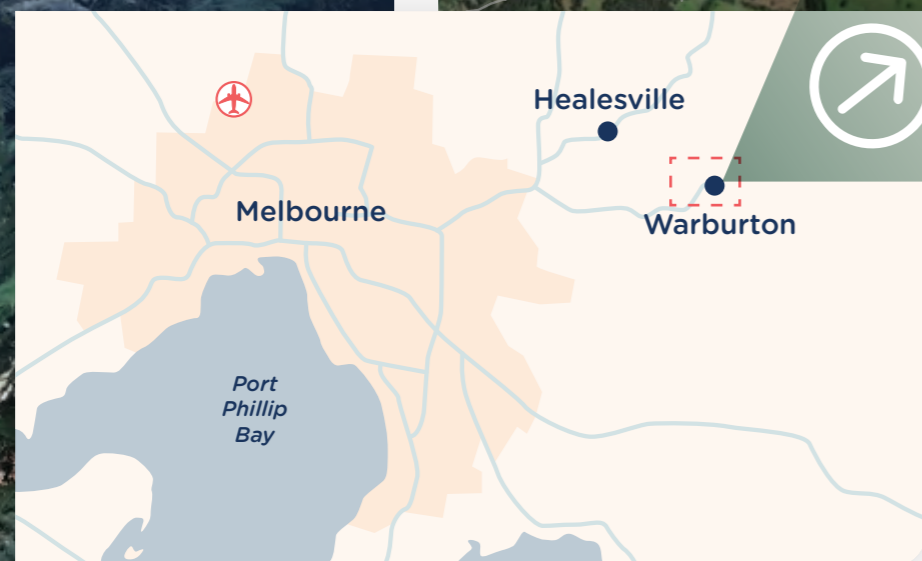
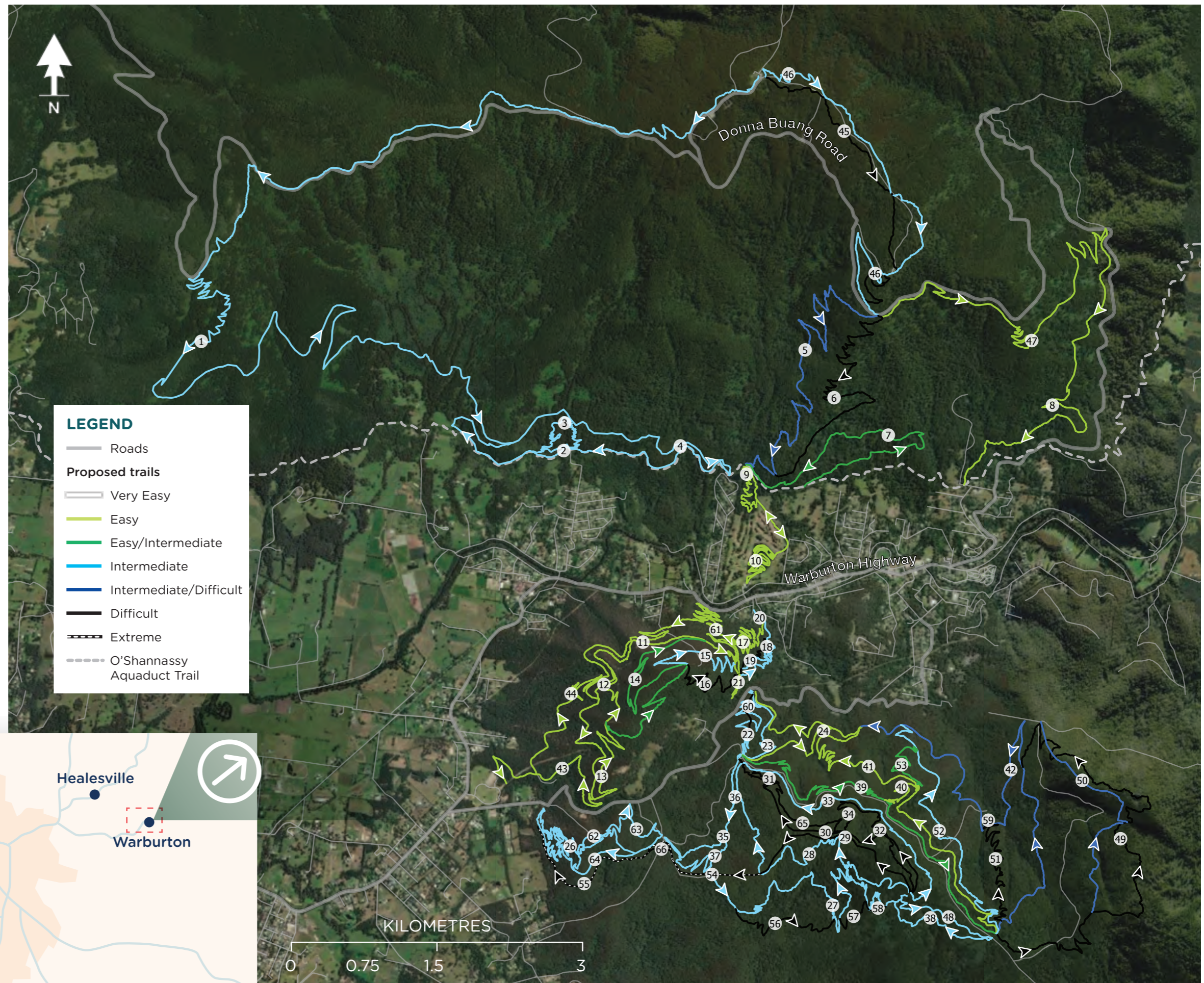
rideyarraranges.com.au



What does the Warburton Mountain Bike Destination mean for the local area?

Already a popular destination for weekend cyclists and tourists, Warburton is on the Yarra River and surrounded by tall mountains on either side. This makes it perfect for creating a ski village-style “ride in, ride out” experience, directly from town.

International and interstate riders typically spend multiple days at a large mountain bike destination. This would extend Warburton’s weekend tourism market into the weekdays.



Opportunities

- Revitalise Warburton by:
 - Encouraging new business
 - Attracting new visitors
 - Boosting local tourism.
- Improve the physical and mental health of the Yarra Ranges and Victorian community by:
 - Supporting a stronger connection with the environment
 - Increasing the number of volunteer and education opportunities
 - Encouraging an active and healthy lifestyle
- Create new recreational opportunities for residents and visitors of all ages and riding abilities and support young people in the community to learn new skills.
- Increase tourism in the area, by offering family-friendly experiences that make the most of the area and put Warburton and surrounds on the map as an international destination.
- Increase job opportunities and improve the local economy.
- When all stages are completed in 2031, the project would:
 - Attract 128,000 new visitors to the area a year who will take part in 222,000 rides
 - Produce 77,000 overnight stays in the region
 - Create 229 jobs
 - Inject an additional \$48m to the local economy.



128,000

new visitors annually to the Yarra Ranges



229
new jobs



\$48 million
in economic spend



KEY CONSIDERATIONS

Protecting the area's natural and cultural environment is at the centre of how we have planned and developed this project.

We have been working with land managers and environmental agencies. We have undertaken detailed assessments of the environmental, social and economic impact of the project.

Our community consultation found key themes the project needed to consider, such as:

- Making sure the trails can be used and enjoyed by locals
- Providing a good mix of easy, intermediate and difficult trail grades
- Making sure the road network and carparks can cope with the extra traffic
- Setting up a plan for ongoing maintenance of the trails and facilities
- Minimising traffic noise on local roads
- Celebrating and making sure we protect the area's natural environment
- Managing safety and risks, including bushfire risks
- Making sure we protect local heritage sites
- Keeping or improving walking and running tracks and trails.

We're planning a world-class mountain bike destination nestled in Warburton's surrounding mountains. It will bring visitors from across the world to experience Warburton's natural beauty and relaxing village atmosphere, create more jobs and grow the local economy.



Key steps in developing the project

OUR ASSESSMENT OF THE PROJECT AND OUR MASTER PLAN

We started developing the project after local riders suggested the idea in 2010 as part of Parks Victoria's *Healthy Parks Healthy People* program.

Since then, we have:

- run a feasibility study – to assess if and how the project could work
- undertaken detailed planning work
- investigated how the project might impact the community and environment
- run community consultation
- asked for expert advice to develop the project's master plan.

We are developing the project in partnership with Parks Victoria and the Department of Environment, Land, Water and Planning. We have also asked for input from the Wurundjeri Woi Wurrung, Melbourne Water and the Upper Yarra Community Enterprise.

We have made a number of changes to the project's design in response to our impact assessments and to include community feedback. This has included removing, redesigning and realigning trails to further reduce impacts and protect important local features.

The project has \$11.3m funding for stage one and we have appointed specialist mountain bike trail design and construction firm World Trail to complete the design of the trail network and construct the trails.

In May 2020 the Victorian Minister for Planning determined that the project was required to undertake an Environment Effects Statement (EES) as part of the approvals process.

What is an EES?

An EES is a well-established process, under the *Environment Effects Act 1978*, that provides a comprehensive framework for assessing the environmental effects of major projects in Victoria.

The Ministerial guidelines for assessment of environmental effects defines the environment as the physical, biological, heritage, cultural, social, health, safety and economic aspects of human surroundings. All of these are considered in the EES.

The guidelines state the objective of the assessment process is to provide for the transparent, integrated and timely assessment of projects capable of having a significant effect on the environment.

The EES process is managed by the Victorian Department of Environment, Land, Water and Planning (DELWP) on behalf of the Minister for Planning. Information about the process is available on the DELWP website www.delwp.vic.gov.au.

The Minister for Planning will provide a final assessment of the effects of the project.

The assessment will consider all relevant information including the EES documents, public submissions, the proponent's response and the inquiry report.

This information and the Minister's advice, as to whether the project provides an acceptable outcome, will be provided to other government agencies who make statutory approvals decisions in relation to specific aspects of the project.

Government agencies will consider the Minister's Assessment in deciding whether to approve a project under Victorian law.

The Minister's Assessment will also inform the decision of the Commonwealth Government in relation to the EPBC Act approval.

WHAT'S INCLUDED IN AN EES?

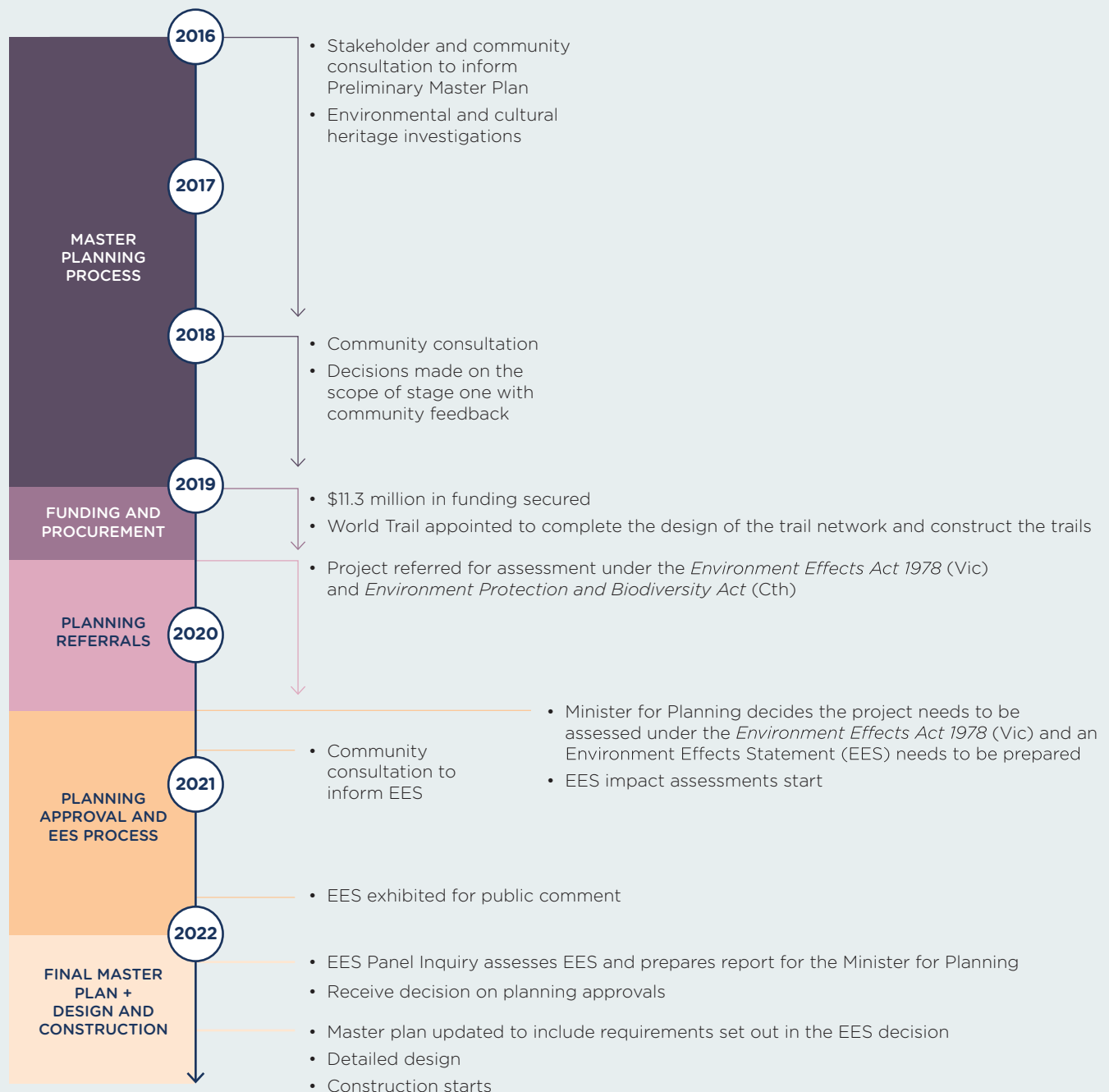
An EES usually contains:

- A description of the proposed development and alternatives considered
- An outline of public and stakeholder consultation undertaken during investigations and issues raised
- A description of the existing environment that may be affected
- Predictions of potential environmental effects of the proposal
- Proposed measures to avoid, minimise or manage adverse environmental effects
- A proposed program for monitoring and managing environmental effects during project implementation.





Project timeline



Find out more and stay involved

Community input is an important part of the EES process and the project's continued development. Sign up for project updates, find the latest information or ask a question on our website rideyarraranges.com.au

- ✉ mtb.planning@yarraranges.vic.gov.au
- ☎ 1300 368 333
- 🌐 rideyarraranges.com.au

NOVEMBER 2021

