

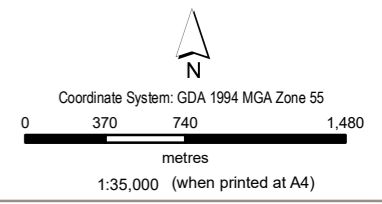


EES Map Book

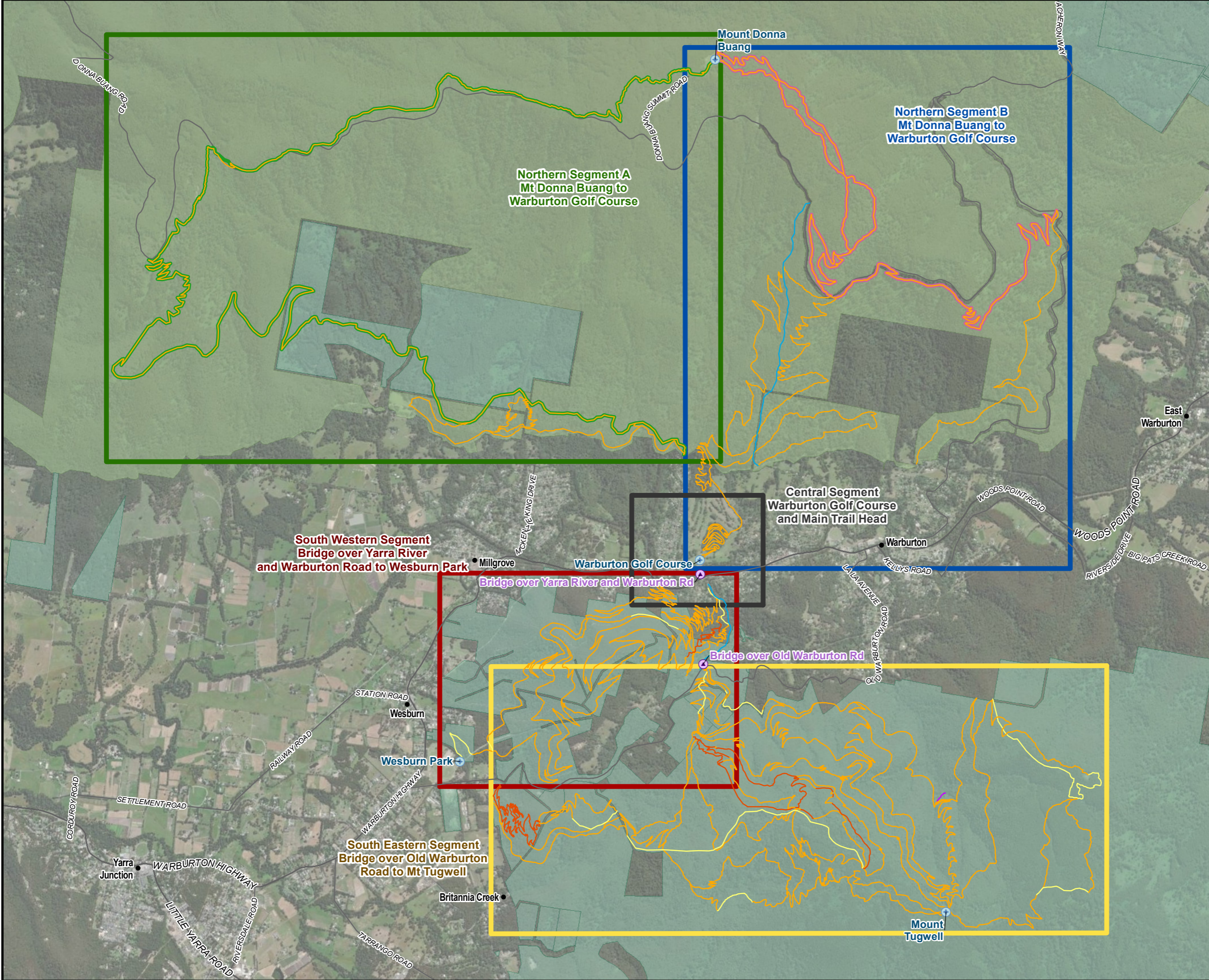
Warburton Mountain Bike Destination

Table of Contents

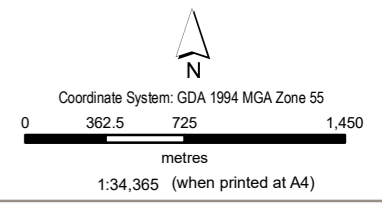
1.0	Project Overview	2
2.0	Trail Overview	3
3.0	Trail Difficulty	4
4.0	Warburton Golf Course Main Trail Head	5
5.0	Yarra River Bridge Concept Design	6
6.0	Sensitive Values	7
7.0	Planning Zone and Overlays	12



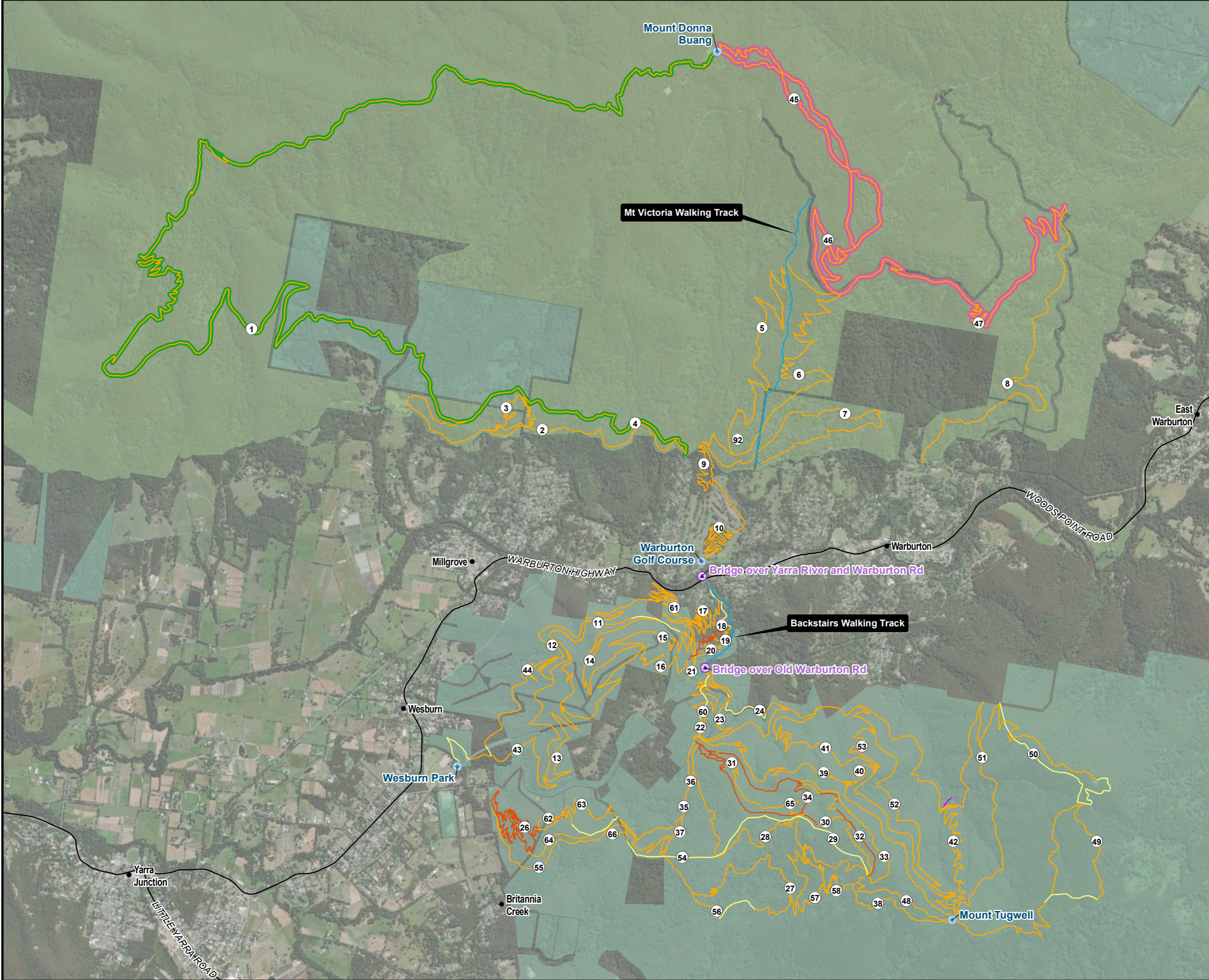
- LEGEND**
- Localities
 - ⊕ Trail Head
 - ⊕ Span Bridge Locations
 - Proposed MTB Trail – Existing Track
 - Proposed MTB Trail
 - Existing MTB Trail
 - Proposed Walking Trail
 - Existing Walking Trail
 - Trail 1
 - Alternatives to Trail 1
 - ▭ Northern Segment A
 - ▭ Northern Segment B
 - ▭ South Eastern Segment
 - ▭ South Western Segment
 - ▭ Central Segment
 - ▭ National Park
 - ▭ State Forest



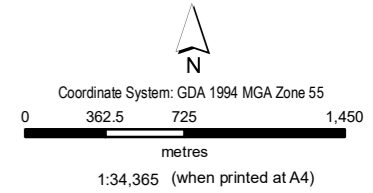
AECOM does not warrant the accuracy or completeness of information displayed in this map and any person using it does so at their own risk. AECOM shall bear no responsibility or liability for any errors, faults, defects, or omissions in the information.



- LEGEND**
- Localities
 - ⊕ Trail Head
 - ⊕ Span Bridge Locations
 - Proposed MTB Trail – Existing Track
 - Proposed MTB Trail
 - Existing MTB Trail
 - Proposed Walking Trail
 - Existing Walking Trail
 - Trail 1
 - Alternatives to Trail 1
 - National Park
 - State Forest

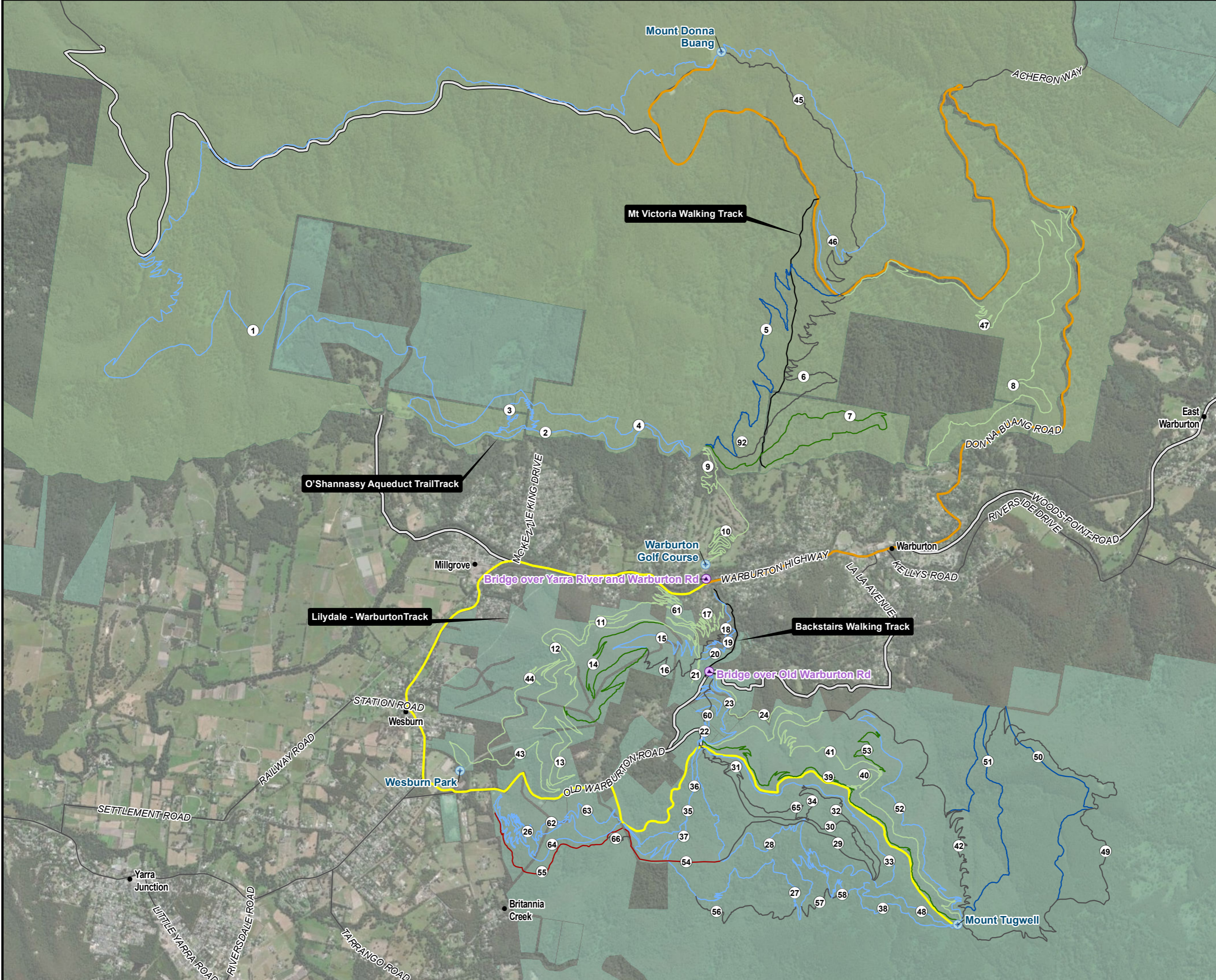


AECOM does not warrant the accuracy or completeness of information displayed in this map and any person using it does so at their own risk. AECOM shall bear no responsibility or liability for any errors, faults, defects, or omissions in the information.



LEGEND

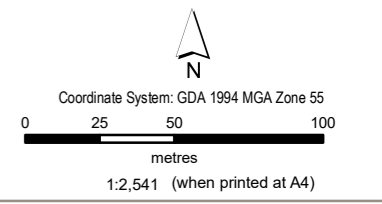
- Localities
- ⊕ Trail Head
- ⊕ Span Bridge Locations
- Trail Difficulty**
- Easy
- Easy / Intermediate
- Intermediate
- Intermediate / Difficult
- Difficult
- Extreme
- Existing Walking Trail
- Northern Shuttle Route
- Southern Shuttle Route
- Roads
- National Park
- State Forest



Trail Difficulties

Map Document: (\\aume11p001\Projects\60636618\900_CAD_GIS\920_GIS\02_Maps\2021\09\Planning\F3_Trail_Difficulties_A3.mxd)

AECOM does not warrant the accuracy or completeness of information displayed in this map and any person using it does so at their own risk. AECOM shall bear no responsibility or liability for any errors, faults, defects, or omissions in the information.

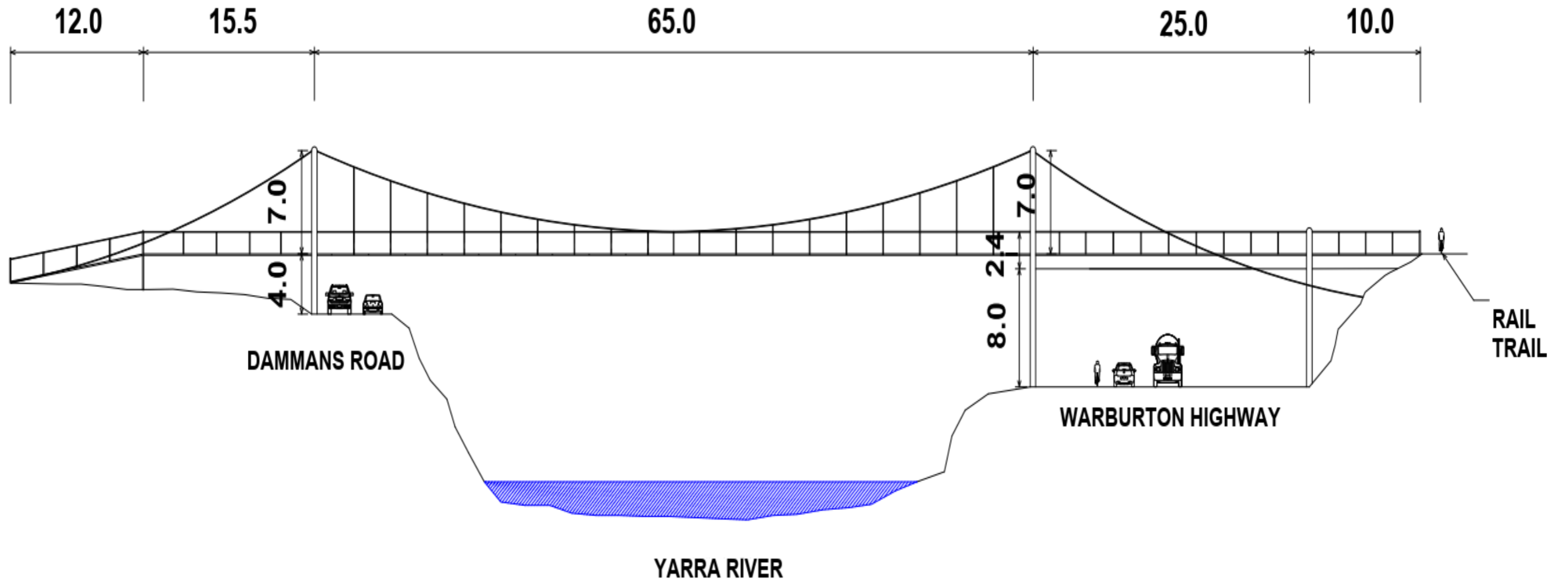


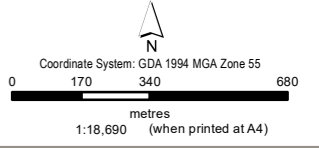
- LEGEND**
- Proposed MTB Trail – Existing Track
 - Proposed MTB Trail
 - Existing Walking Trail



AECOM does not warrant the accuracy or completeness of information displayed in this map and any person using it does so at their own risk. AECOM shall bear no responsibility or liability for any errors, faults, defects, or omissions in the information.

5.0 Yarra River Bridge Concept Design





MtDB WSF Survey Results - 2019

- DNA detected
- Sample point

MtDB WSF Survey Results - 2021

- ▲ No DNA detected, no larvae observed
- Confirmed Leadbeater's Possum sites (DELWP 2021b)
- Leadbeater Possum record (Zoos Victoria, unpub. data)
- Leadbeater's Possum VBA record (DELWP 2020)
- Leadbeater's possum nest box (Parks Victoria, unpub. data)
- Trail Head

Proposed MTB Trail

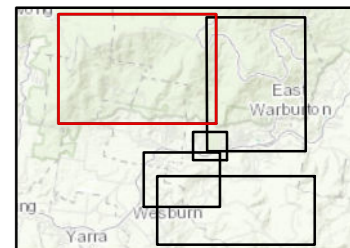
- Alternatives to Trail 1
- Roads
- Watercourses
- Waterbodies
- SCO - 20m Corridor
- National Park
- State Forest

Cool Temperate Rainforest Status

- CTMF
- CTR

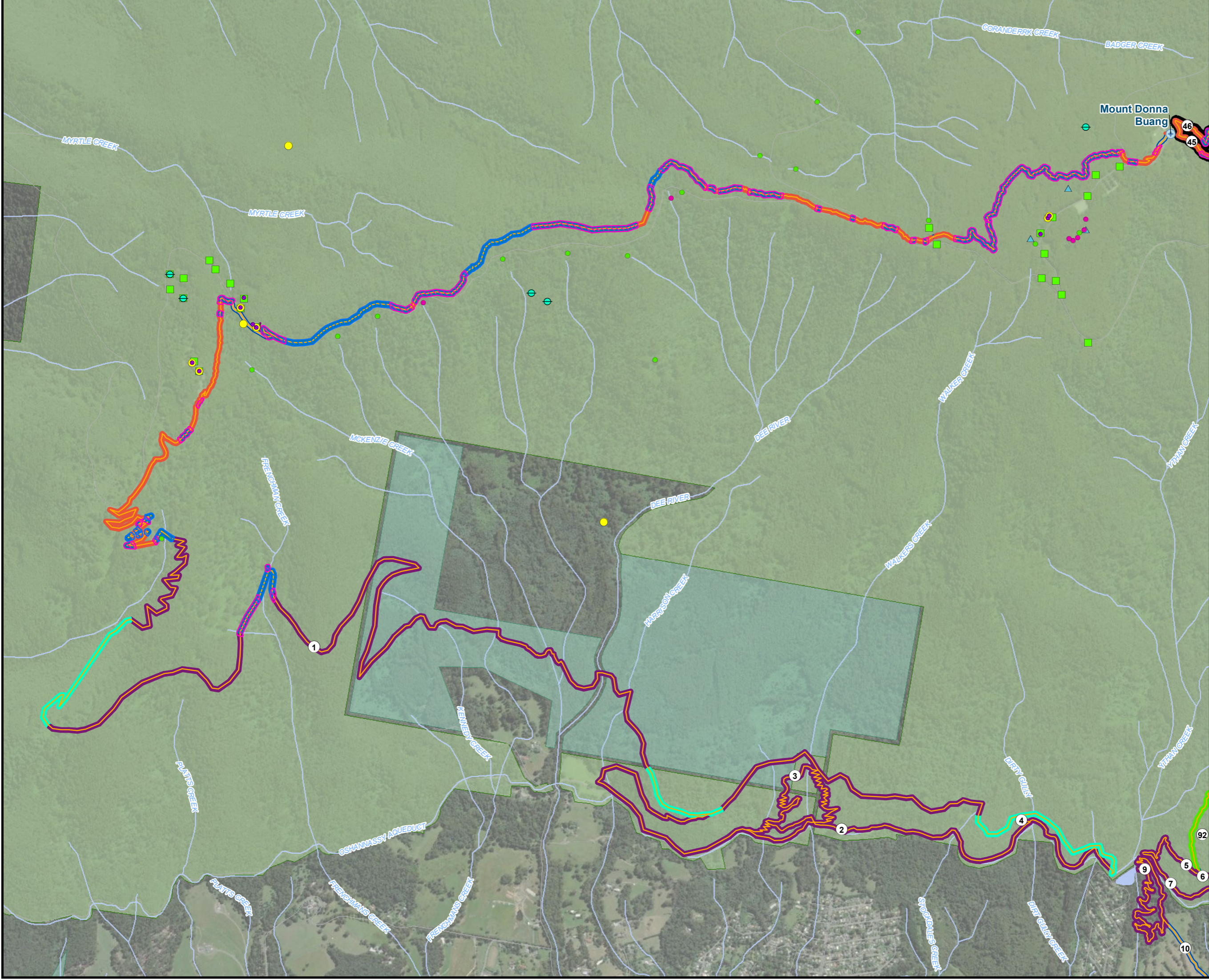
Ecological Vegetation Class

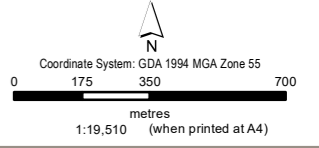
- Cool Temperate Rainforest
- Damp Forest
- Montane Wet Forest
- Shrubby Foothill Forest
- Wet Forest



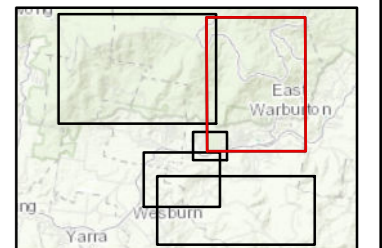
Sensitive Values Northern Segment A

AECOM does not warrant the accuracy or completeness of information displayed in this map and any person using it does so at their own risk. AECOM shall bear no responsibility or liability for any errors, faults, defects, or omissions in the information.

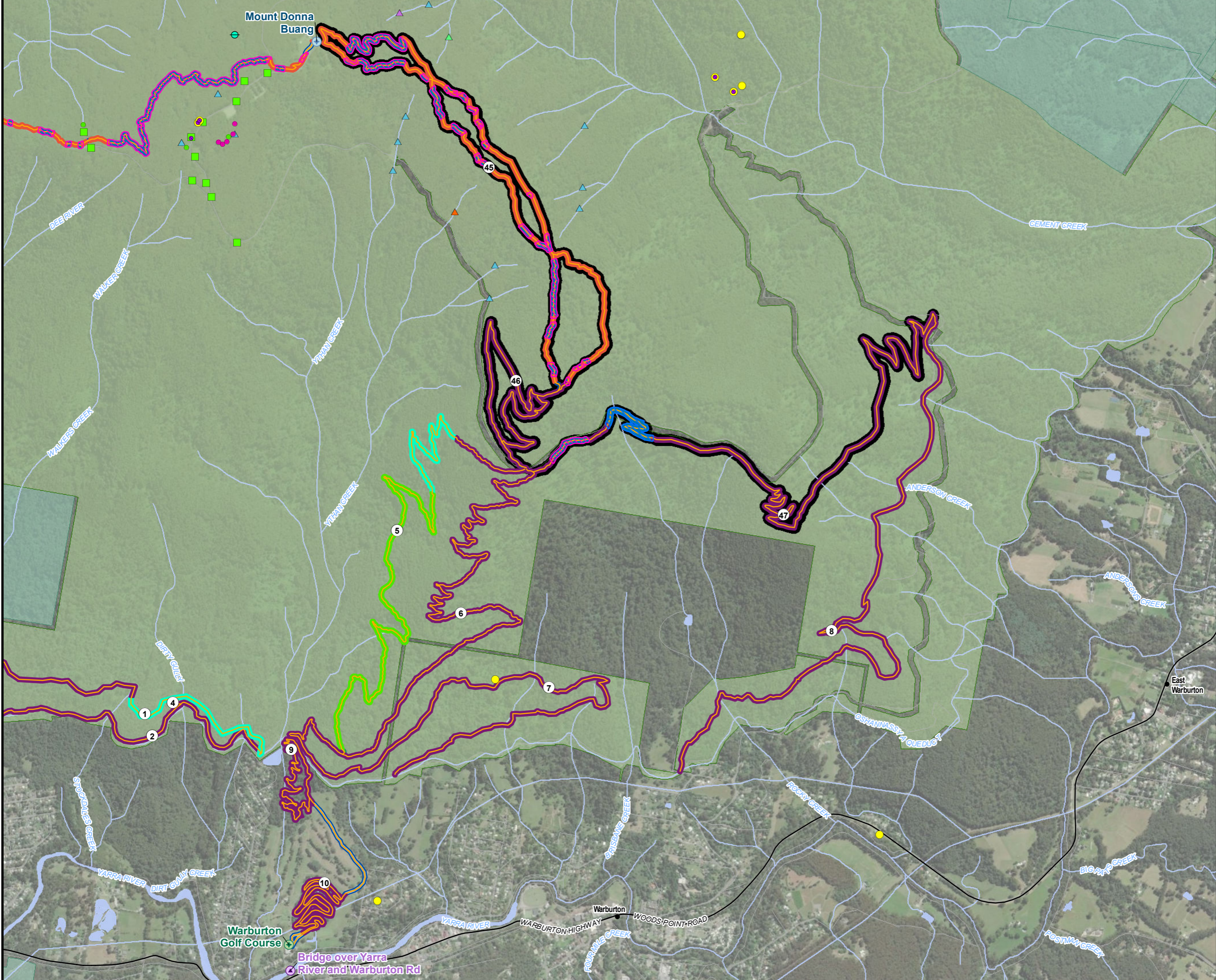




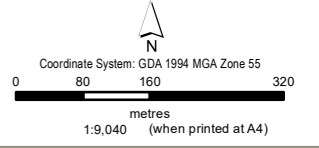
- Main Localities
- MtDB WSF Survey Results - 2019**
- DNA detected
- Sample point
- MtDB WSF Survey Results - 2021**
- ▲ DNA detected
- ▲ DNA detected, nymphs observed
- ▲ No DNA detected, no larvae observed
- ▲ No DNA detected, nymph observed
- Confirmed Leadbeater's Possum sites (DELWP 2021b)
- Leadbeater Possum record (Zoos Victoria, unpub. data)
- Leadbeater's Possum VBA record (DELWP 2020)
- Leadbeater's possum nest box (Parks Victoria, unpub. data)
- Trail head and Visitor's Hub
- Trail Head
- Bridge Locations
- Proposed MTB Trail
- Alternatives to Trail 1
- Roads
- Watercourses
- Waterbodies
- SCO - 20m Corridor
- National Park
- State Forest
- Cool Temperate Rainforest Status**
- CTMF
- CTR
- Ecological Vegetation Class**
- Cool Temperate Rainforest
- Damp Forest
- Montane Wet Forest
- Riparian Forest
- Shrubby Foothill Forest
- Wet Forest



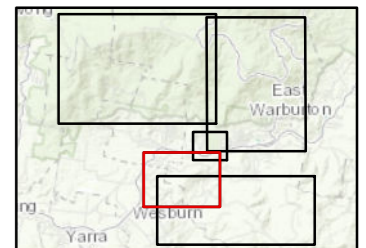
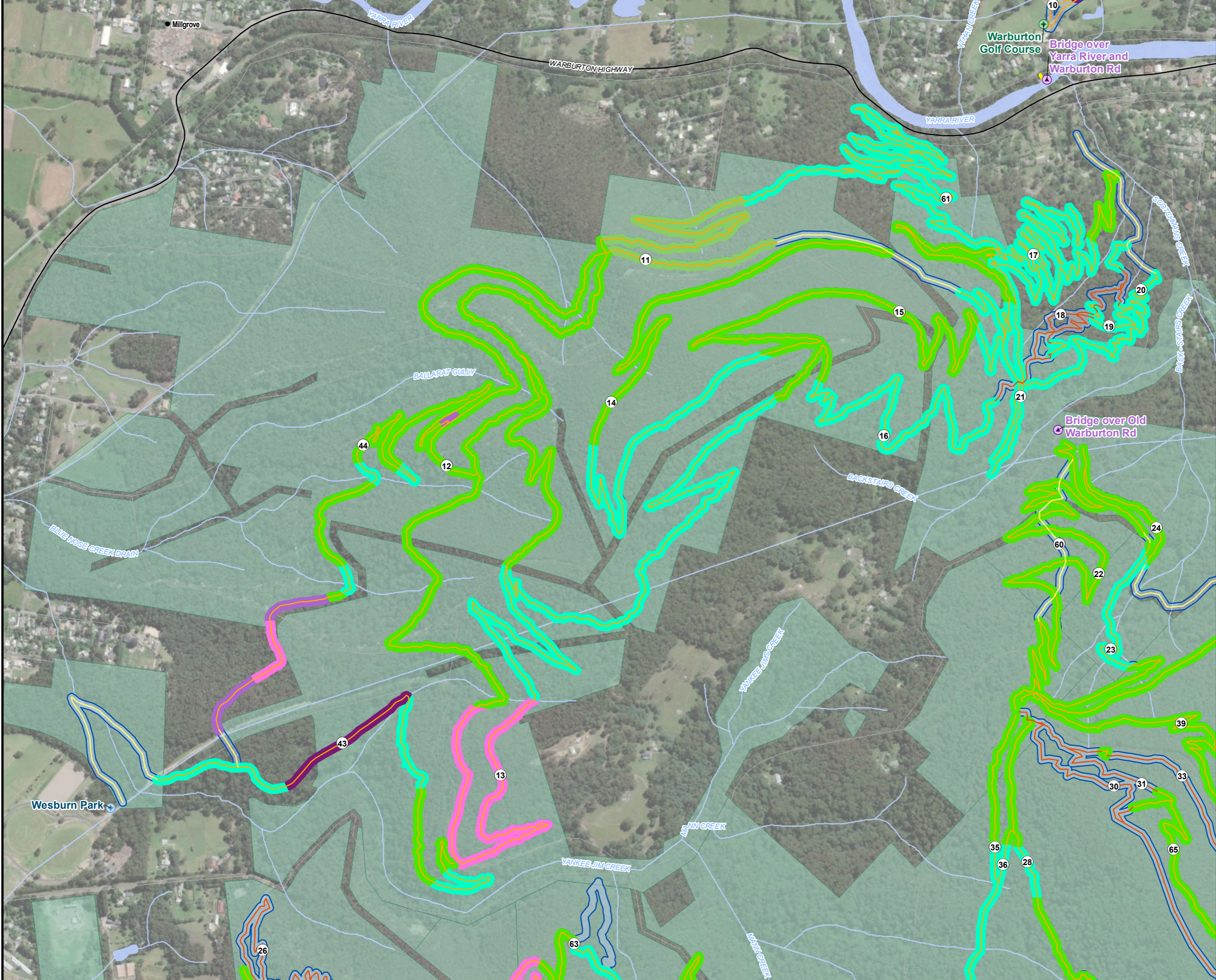
Sensitive Values Northern Segment B



AECOM does not warrant the accuracy or completeness of information displayed in this map and any person using it does so at their own risk. AECOM shall bear no responsibility or liability for any errors, faults, defects, or omissions in the information.



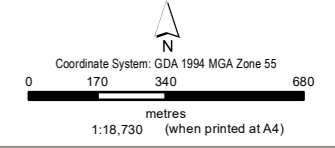
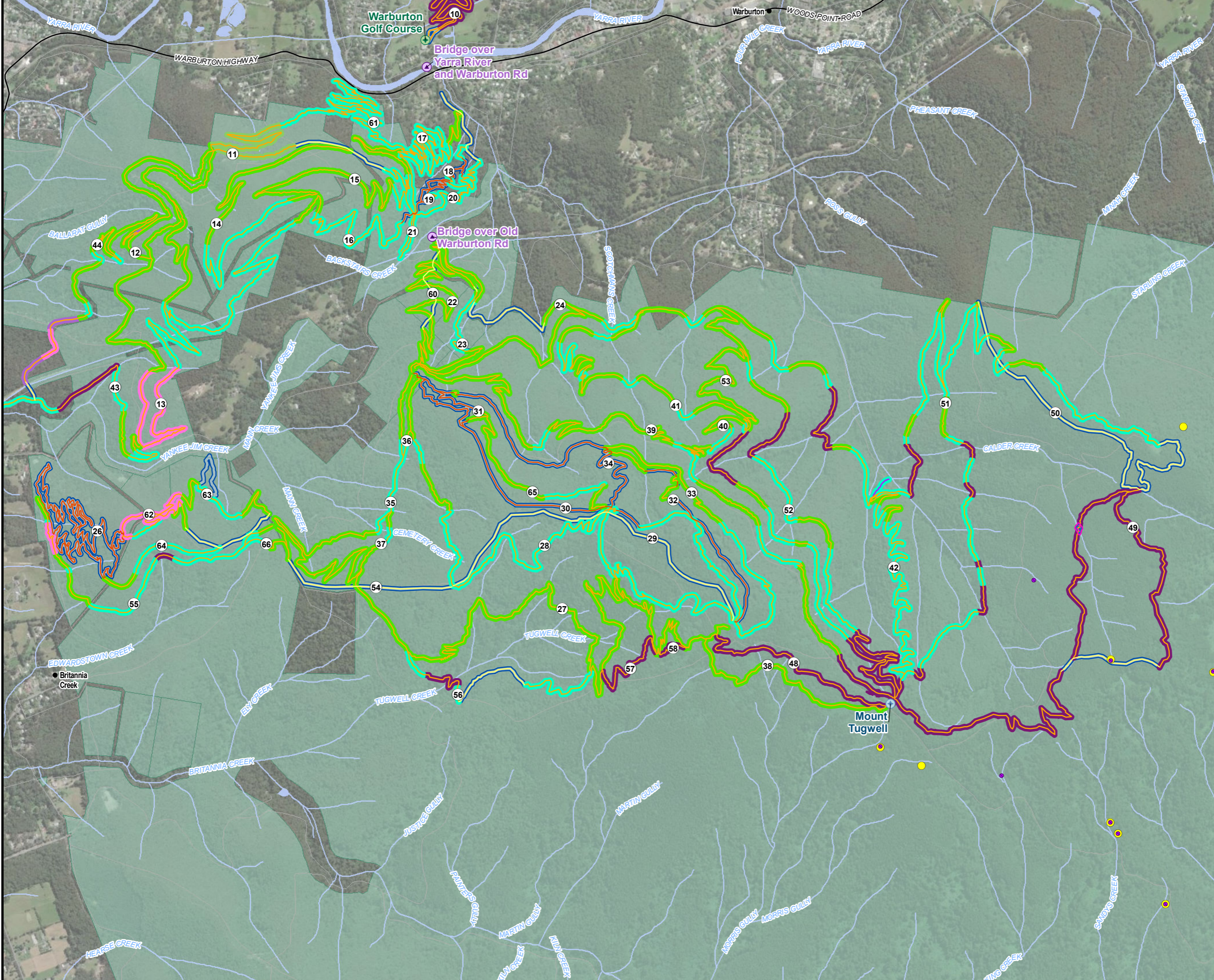
- Main Localities
- 📍 Trail head and Visitor's Hub
- 📍 Trail Head
- 📍 Bridge Locations
- Proposed MTB Trail - Existing track
- Proposed MTB Trail
- Existing MTB Trail
- Alternatives to Trail 1
- Roads
- Watercourses
- Waterbodies
- SCO - 20m Corridor
- State Forest
- Ecological Vegetation Class**
- Damp Forest
- Herb-rich Foothill Forest
- Lowland Forest
- Riparian Forest
- Shrubby Foothill Forest
- Valley Heathy Forest
- Wet Forest



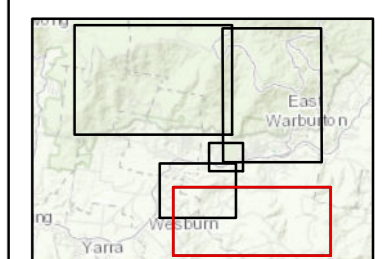
**Sensitive Values
 South Western Segment**

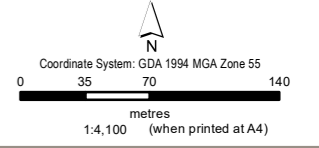
AECOM does not warrant the accuracy or completeness of information displayed in this map and any person using it does so at their own risk. AECOM shall bear no responsibility or liability for any errors, faults, defects, or omissions in the information.

AECOM does not warrant the accuracy or completeness of information displayed in this map and any person using it does so at their own risk. AECOM shall bear no responsibility or liability for any errors, faults, defects, or omissions in the information.

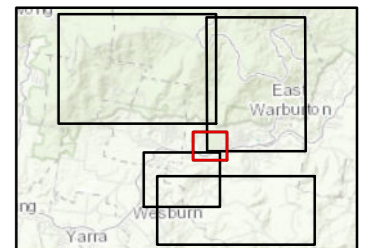


- Main Localities
- Confirmed Leadbeater's Possum sites (DELWP 2021b)
- Leadbeater's Possum VBA record (DELWP 2020)
- Trail head and Visitor's Hub
- Trail Head
- Bridge Locations
- Proposed MTB Trail - Existing track
- Proposed MTB Trail
- Existing MTB Trail
- Proposed Walking Trail
- Alternatives to Trail 1
- Roads
- Watercourses
- Waterbodies
- SCO - 20m Corridor
- State Forest
- Cool Temperate Rainforest Status**
- CTMF
- Ecological Vegetation Class**
- Cool Temperate Rainforest
- Damp Forest
- Herb-rich Foothill Forest
- Lowland Forest
- Riparian Forest
- Shrubby Foothill Forest
- Valley Heathy Forest
- Wet Forest



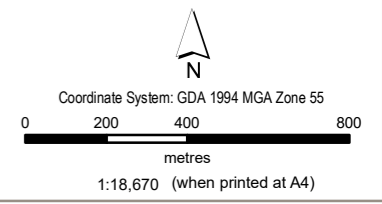


- Leadbeater's Possum VBA record (DELWP 2020)
- Trail head and Visitor's Hub
- Bridge Locations
- Proposed MTB Trail - Existing track
- Proposed MTB Trail
- Alternatives to Trail 1
- Roads
- Watercourses
- Waterbodies
- SCO - 20m Corridor
- State Forest
- Ecological Vegetation Class**
- Damp Forest
- Riparian Forest
- Shrubby Foothill Forest
- Wet Forest

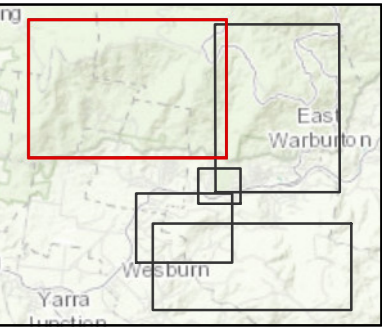


**Sensitive Values
Central Segment**

AECOM does not warrant the accuracy or completeness of information displayed in this map and any person using it does so at their own risk. AECOM shall bear no responsibility or liability for any errors, faults, defects, or omissions in the information.

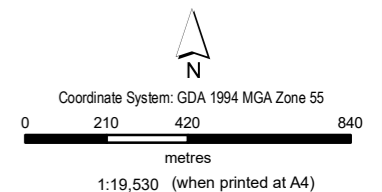


- LEGEND**
- Trail Head
 - Proposed MTB Trail
 - Trail 1
 - Alternatives to Trail 1
 - EMO - Erosion Management
 - HO - Heritage Overlay
 - LSIO - Land Subject to Inundation
 - LRDZ - Low Density Residential
 - NRZ - Neighbourhood Residential
 - PCRZ - Public Conservation & Resource
 - RCZ - Rural Conservation

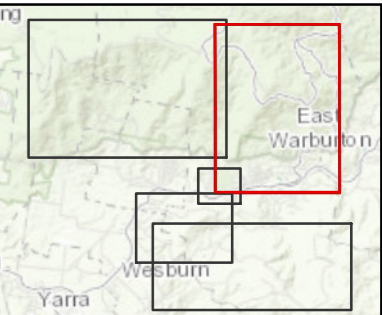
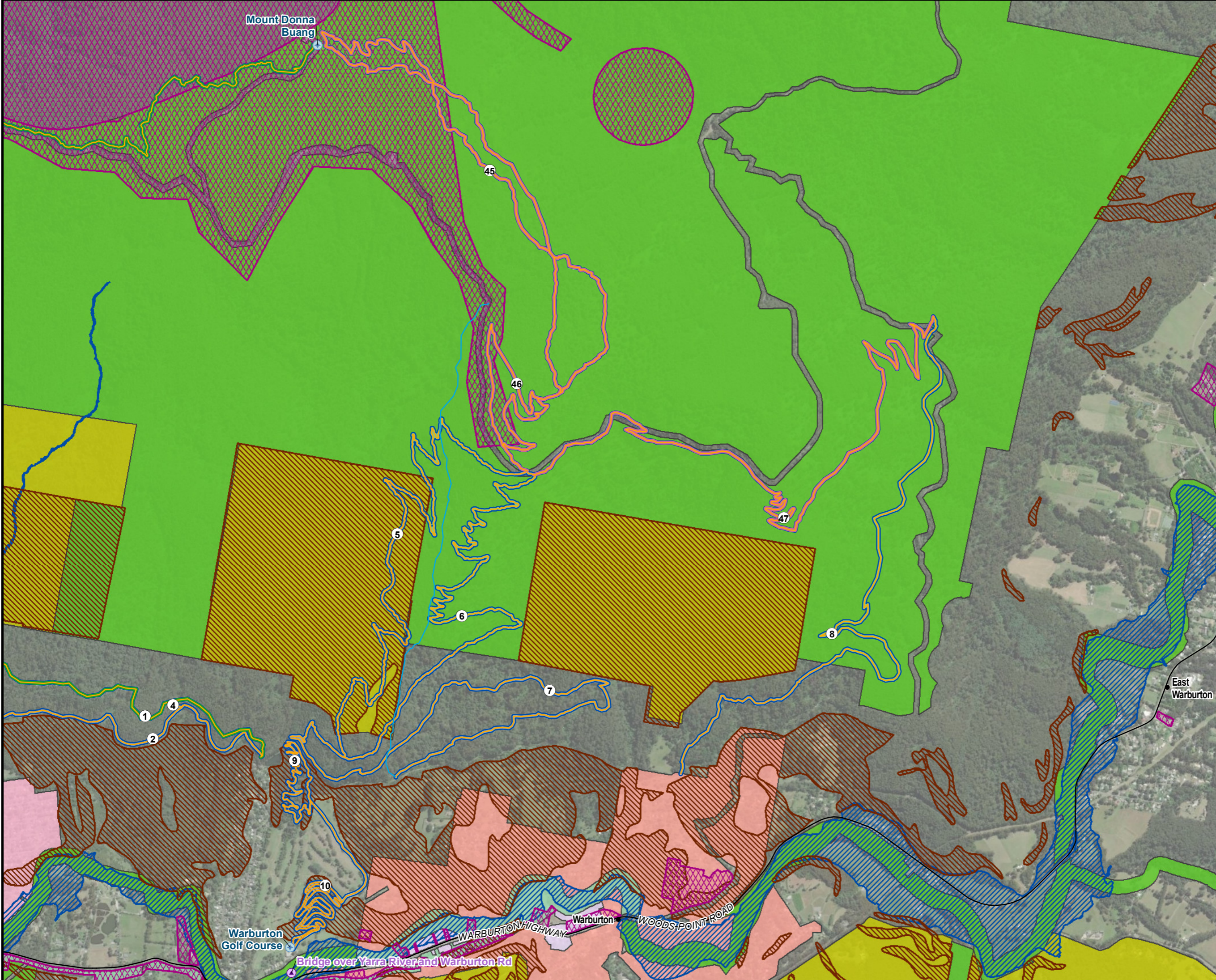


Planning Zones & Overlays Northern Segment A

AECOM does not warrant the accuracy or completeness of information displayed in this map and any person using it does so at their own risk. AECOM shall bear no responsibility or liability for any errors, faults, defects, or omissions in the information.



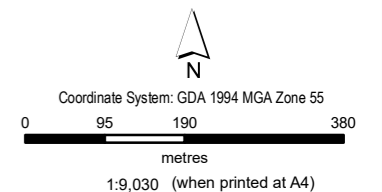
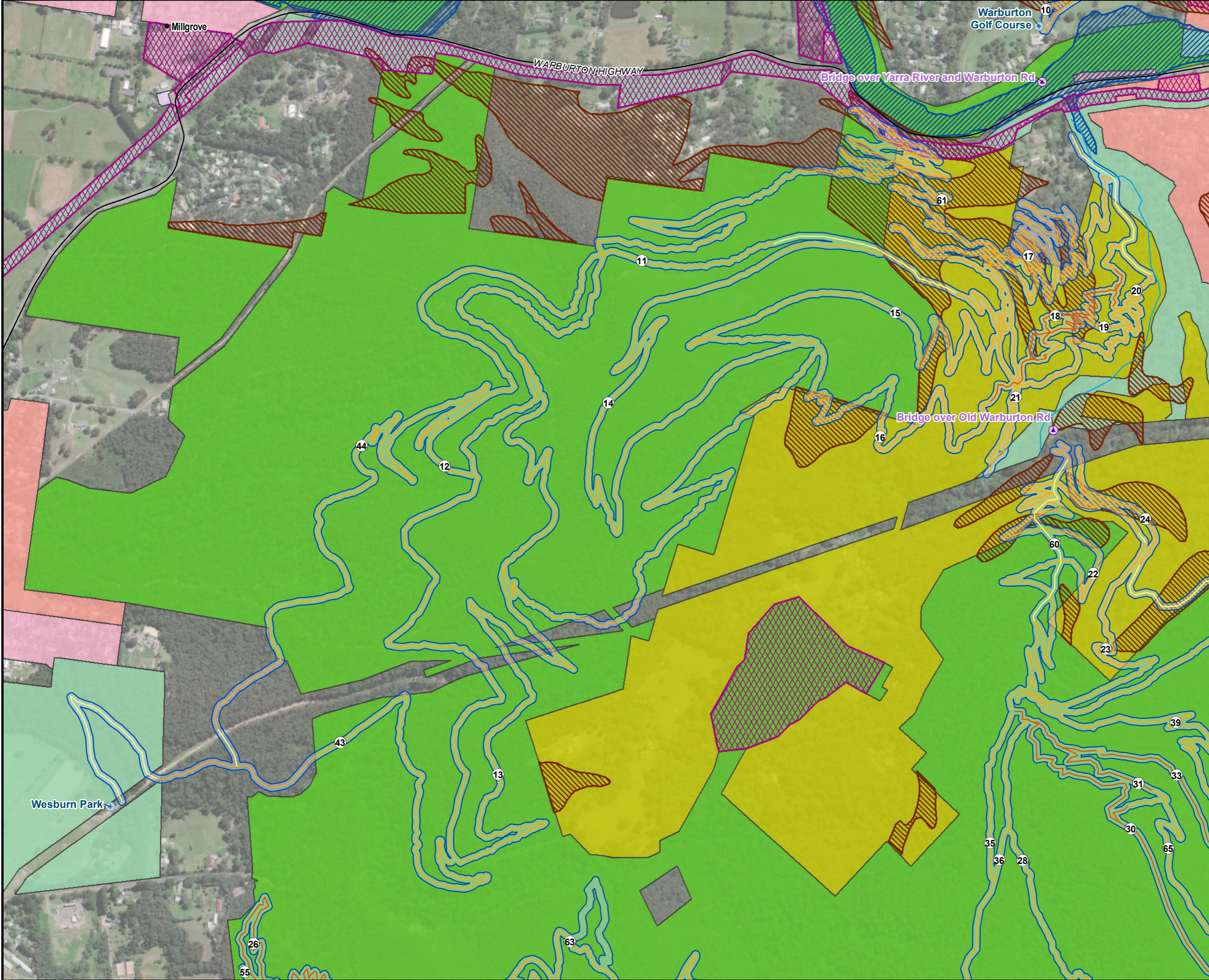
- LEGEND**
- Localities
 - ⊕ Trail Head
 - ⊗ Span Bridge Locations
 - Proposed MTB Trail
 - Existing Walking Trail
 - Trail 1
 - Alternatives to Trail 1
 - ▨ EMO - Erosion Management
 - ▨ HO - Heritage Overlay
 - ▨ LSIO - Land Subject to Inundation
 - ▨ C1Z - Commercial 1
 - ▨ LRDZ - Low Density Residential
 - ▨ NRZ - Neighbourhood Residential
 - ▨ PCRZ - Public Conservation & Resource
 - ▨ PPRZ - Public Park & Recreation
 - ▨ RCZ - Rural Conservation



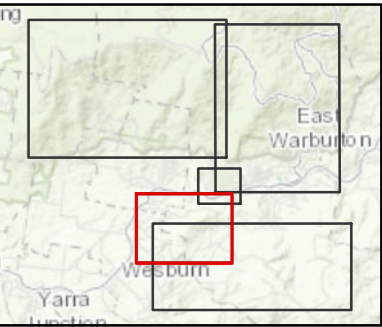
Planning Zones & Overlays Northern Segment B

AECOM does not warrant the accuracy or completeness of information displayed in this map and any person using it does so at their own risk. AECOM shall bear no responsibility or liability for any errors, faults, defects, or omissions in the information.

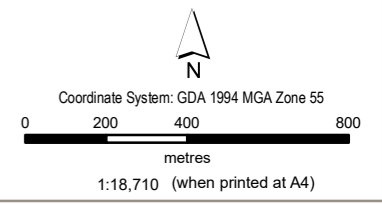
AECOM does not warrant the accuracy or completeness of information displayed in this map and any person using it does so at their own risk. AECOM shall bear no responsibility or liability for any errors, faults, defects, or omissions in the information.



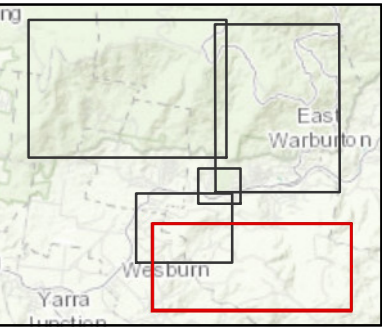
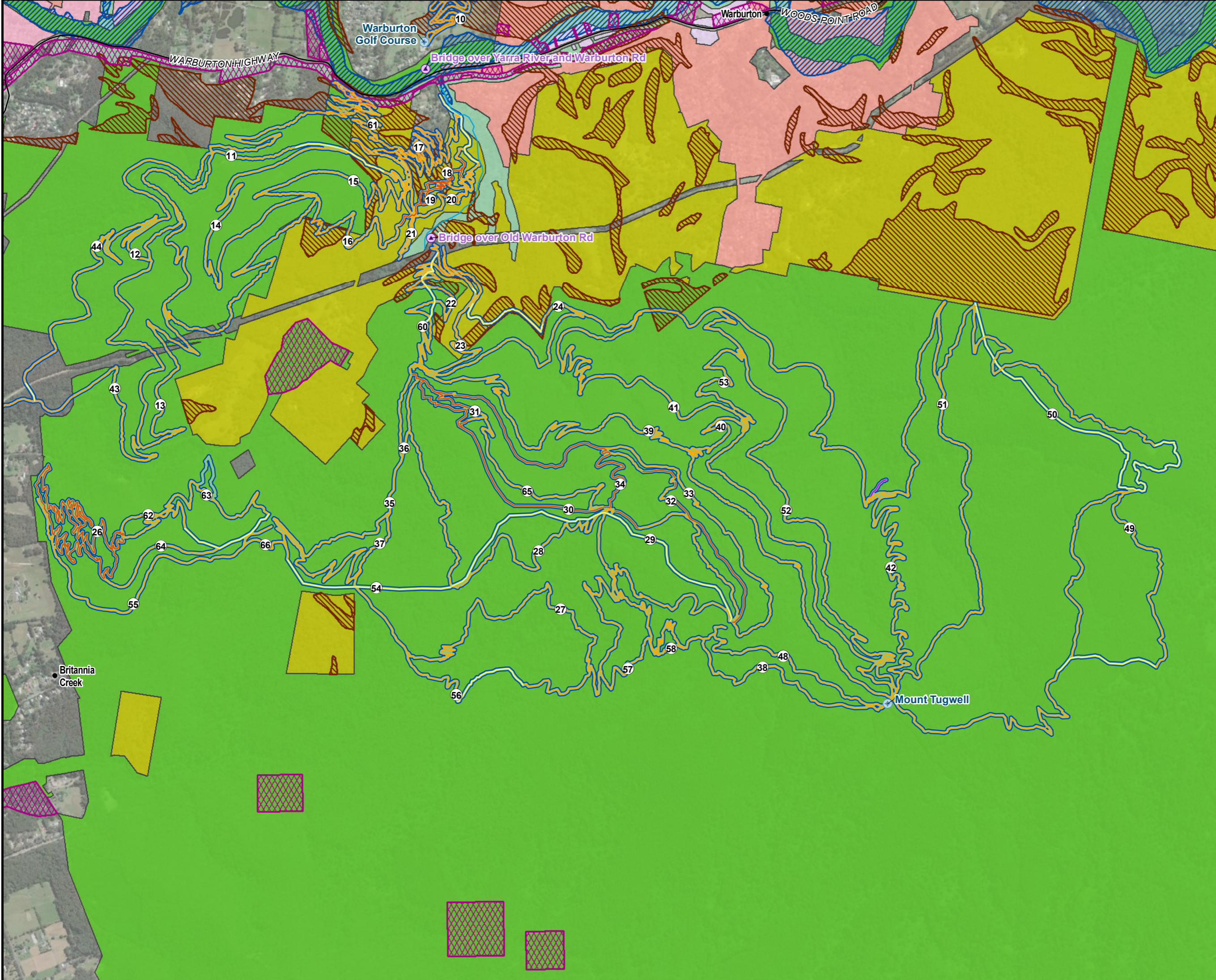
- LEGEND**
- Localities
 - ⊕ Trail Head
 - ▲ Span Bridge Locations
 - Proposed MTB Trail – Existing Track
 - Proposed MTB Trail
 - Existing MTB Trail
 - Existing Walking Trail
 - ▨ EMO - Erosion Management
 - ▩ HO - Heritage Overlay
 - ▧ LSIO - Land Subject to Inundation
 - C1Z - Commercial 1
 - LRDZ - Low Density Residential
 - NRZ - Neighbourhood Residential
 - PCRZ - Public Conservation & Resource
 - PPRZ - Public Park & Recreation
 - RCZ - Rural Conservation



**Planning Zones & Overlays
 South Western Segment**

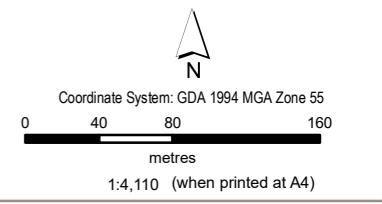


- LEGEND**
- Localities
 - ⊕ Trail Head
 - ⊗ Span Bridge Locations
 - Proposed MTB Trail – Existing Track
 - Proposed MTB Trail
 - Existing MTB Trail
 - Proposed Walking Trail
 - Existing Walking Trail
 - ▨ EMO - Erosion Management
 - ▨ HO - Heritage Overlay
 - ▨ LSIO - Land Subject to Inundation
 - C1Z - Commercial 1
 - LRDZ - Low Density Residential
 - NRZ - Neighbourhood Residential
 - PCRZ - Public Conservation & Resource
 - PPRZ - Public Park & Recreation
 - RCZ - Rural Conservation

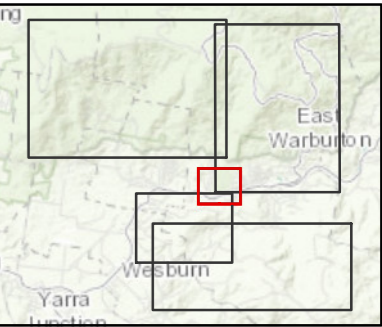
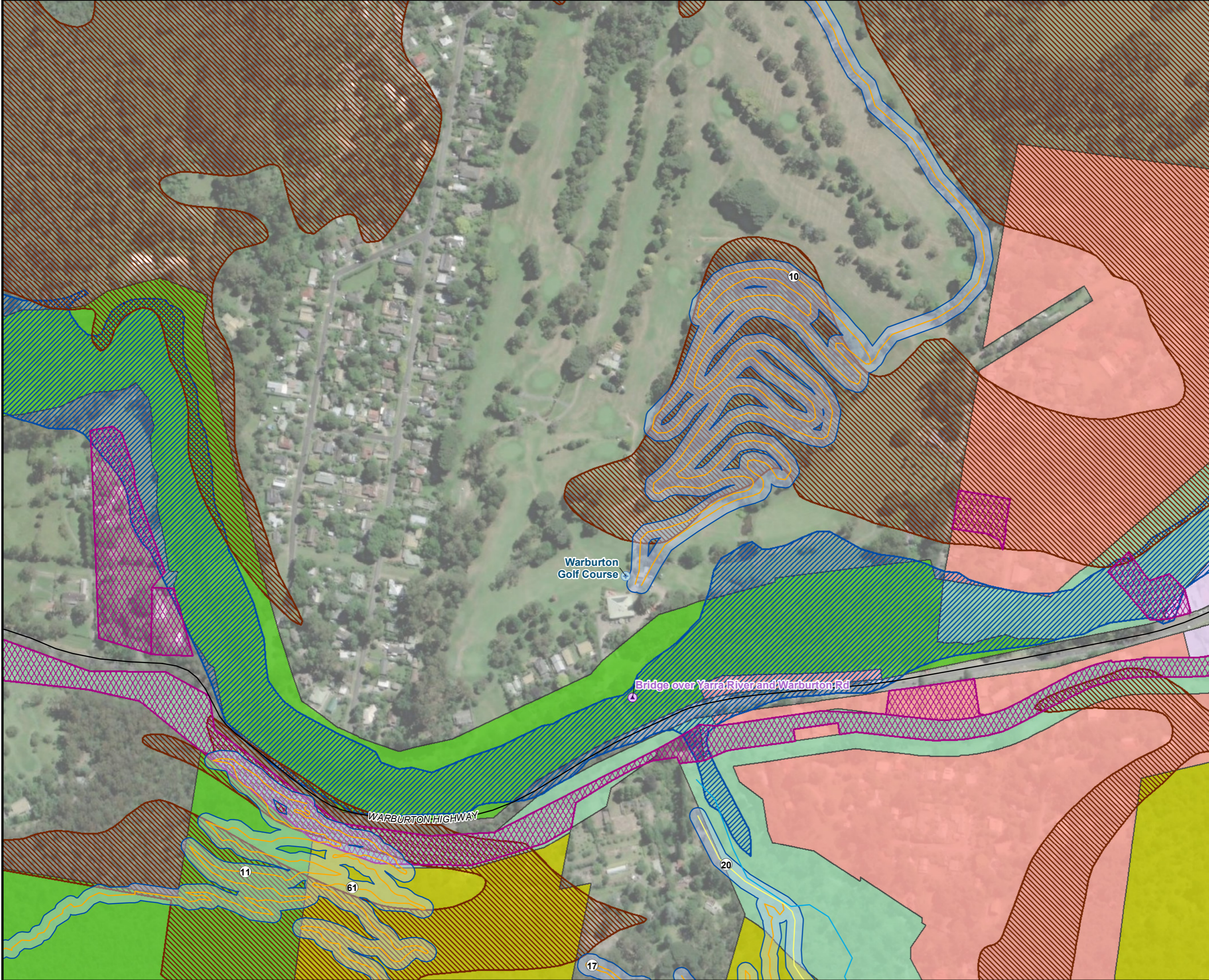


**Planning Zones & Overlays
 South Eastern Segment**

AECOM does not warrant the accuracy or completeness of information displayed in this map and any person using it does so at their own risk. AECOM shall bear no responsibility or liability for any errors, faults, defects, or omissions in the information.



- LEGEND**
- Trail Head
 - Span Bridge Locations
 - Proposed MTB Trail – Existing Track
 - Proposed MTB Trail
 - Existing Walking Trail
 - EMO - Erosion Management
 - HO - Heritage Overlay
 - LSIO - Land Subject to Inundation
 - C1Z - Commercial 1
 - LRDZ - Low Density Residential
 - PCRZ - Public Conservation & Resource
 - PPRZ - Public Park & Recreation
 - RCZ - Rural Conservation



**Planning Zones & Overlays
 Central Segment**

AECOM does not warrant the accuracy or completeness of information displayed in this map and any person using it does so at their own risk. AECOM shall bear no responsibility or liability for any errors, faults, defects, or omissions in the information.