

BUILD Enviro

Yarra Ranges Council

Construction Environmental
Management Plan (CEMP)

Warburton Mountain Bike Destination
(Southern Network)

Audit Report
BENV_REP_YRC001
23 July 2024



Document Control

Version	Date	Document	Recipient	No. of Copies
Revision 0 DRAFT	20 May 2024	BENV_REP_YRC001	David Bartlett	1 pdf copy
Revision A FINAL <i>Chi JTB</i>	23 July 2024	BENV_REP_YRC001	David Bartlett	1 pdf copy

© Document Copyright of Build Enviro Consulting Pty Ltd

This document is and shall remain the property of Build Enviro Consulting Pty Ltd. Build Enviro Consulting Pty Ltd accepts no liability of any kind for unauthorized use of the contents of this report. The document may only be used for the purposes for which it was commissioned and in accordance with the Limitations and Terms of Engagement for the commission.

EXECUTIVE SUMMARY

Build Enviro Consulting Group (Build Enviro) was engaged by Yarra Ranges Council (YRC) to conduct an audit of the Construction Environmental Management Plan (CEMP), Warburton Mountain Bike Destination (Southern Network). This audit is a requirement under section 9.2 of the CEMP.

Build Enviro Principal Consultant, Chris Sprott conducted a pre-construction audit at YRC Lilydale office on 8 May 2024, with key site personnel.

The majority of environmental and social documentation and approvals were found to have been completed prior to construction activities commencing, with the exception of the Environmental Induction and related fact sheets (at the time of the audit on 8 May 2024).

There were 9 minor opportunities for improvement identified during the audit, all of which were related to the completion of the induction materials. Following the audit, the Induction Handbook for the project has been completed. The Induction Handbook and induction records were provided to the auditor on 23 July 2024. As such all 9 opportunities for improvement have now been closed out.

No non-conformances were identified at the time of the audit.

The project received approval from the Department of Climate Change, Energy, the Environment and Water on 17 July 2024, approving the project under the EPBC Act (referral 2019/8605).

TABLE OF CONTENTS

EXECUTIVE SUMMARY	3
TABLE OF CONTENTS	4
1 Introduction	5
2 Site and project information.....	5
3 Audit scope.....	6
4 Methodology	7
4.1 Audit checklist.....	7
4.2 Document review	7
4.3 Office visit/audit	7
4.4 Interviews.....	8
4.5 Close out and follow up	8
5 Findings	8
5.1 General Findings.....	8
5.2 Non-Conformances	8
5.3 Opportunities for Improvement	9
6 Conclusion and recommendations	14

1 Introduction

Build Enviro Consulting Group (Build Enviro) was engaged by Yarra Ranges Council (YRC) to conduct an audit of their Construction Environmental Management Plan (CEMP), Warburton Mountain Bike Destination (Southern Network), Revision 2 - Final. The CEMP was endorsed by the Minister for Planning on 13 February 2024 and is the primary mechanism for environmental management during construction of the Warburton Mountain Bike Destination (the project). This audit is a requirement under section 9.2 of the CEMP.

2 Site and project information

The project is a proposed world class mountain biking destination centred around Warburton, approximately 70 kilometres east of Melbourne. The project consists of:

- 123 kilometres of mountain bike trails.
- 57 trails.
- 2 trail heads: Wesburn Park and Mount Tugwell.
- 1 major bridge: Old Warburton Road.
- 17 small bridges to protect waterways.
- 35 sections of boardwalk.
- Average trail width of 2.3 metres.
- 11 kilometres of existing mountain bike trails to be merged into the network.
- 2 kilometres of existing vehicle track merged into the network.

The southern section of the trail network is located to the south of the Warburton Highway within the Yarra State Forest (see Figure 1 below).

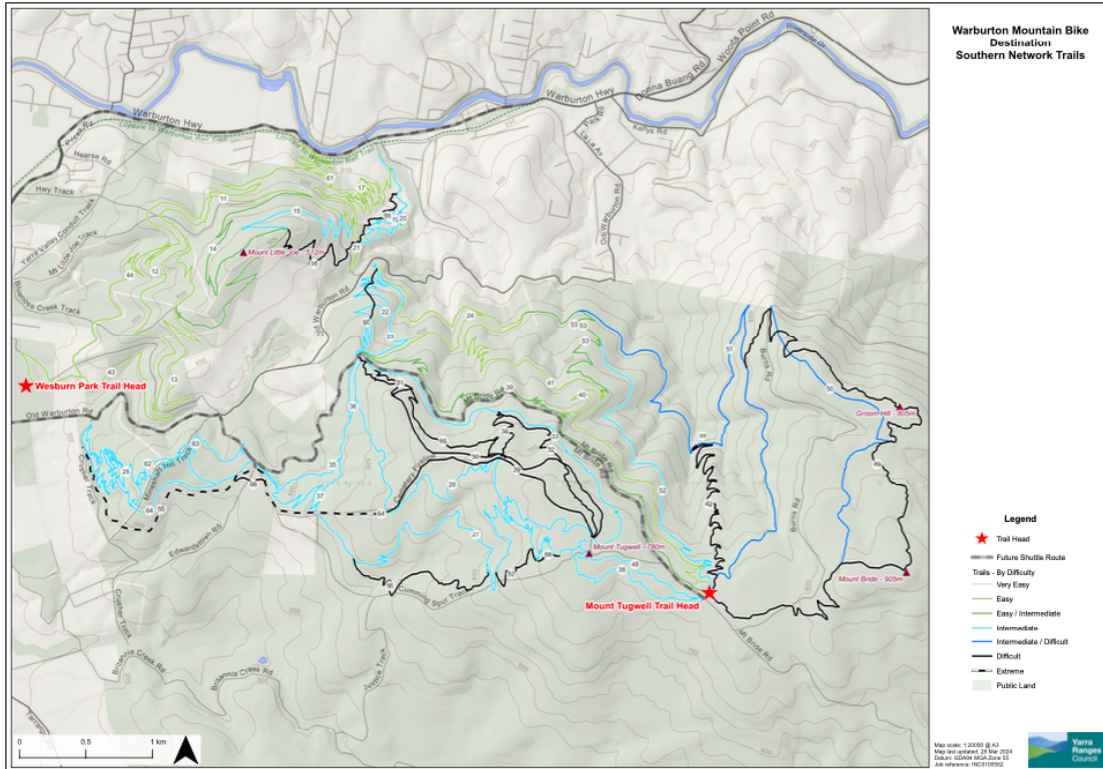


Figure 1: Warburton Mountain Bike Destination, Southern Network Trails [source: Yarra Ranges Council]

3 Audit scope

Section 9.2 of the CEMP requires YRC to have the CEMP verified through periodic independent environmental audits. The scope of this audit is to verify that all relevant environmental/social documentation and approvals are in place for construction activities, prior to commencement, as per the requirements of section 9.2 (below).

9.2 Independent audit

Compliance with the CEMP would be verified through periodic independent environmental audits coordinated by Yarra Ranges Council. **An audit would be conducted prior to the commencement of construction to verify all relevant environmental/social documentation and approvals are in place for construction activities.** Audits would be conducted at least annually thereafter by suitably qualified and experienced environmental auditors that are otherwise not involved in the project’s construction. Audits would be conducted following the completion of construction to assess the effectiveness of rehabilitation works.

4 Methodology

4.1 Audit checklist

An audit checklist was developed primarily against Section 6.0 of the CEMP: 'Environmental management measures', which describes the environmental measures identified through the EES and proposed monitoring and reporting mechanisms to be implemented during the construction phase, as well as relevant sections of the Warburton Mountain Bike Destination Project (Southern Network) Incorporated Document 2023. Environmental and social aspects covered within section 6.0 of the CEMP and included in the development of the audit checklist include:

- 6.1 Biodiversity
- 6.2 Surface water, groundwater and geotechnical hazards
- 6.3 Heritage
- 6.4 Transport
- 6.5 Land use, noise, air quality and visual
- 6.6 Socio-economic
- 6.7 Bushfire
- 6.8 Waste

4.2 Document review

A document request list was submitted to the Warburton Mountain Bike Destination team, for review by the auditor against the relevant sections of the CEMP and Incorporated Document.

4.3 Office visit/audit

Chris Sprott, Principal Consultant of Build Enviro, conducted the audit at YRC Lilydale office on 8 May 2024, with key project personnel; David Bartlett (Recreation & Active Living – Project Officer), Matt Harrington (Executive Project Manager) and Scott Chancellor (Project Manager).

4.4 Interviews

Interviews were conducted while at the YRC office, with the above-mentioned YRC staff. Relevant systems and documents were also reviewed during the course of the interviews.

4.5 Close out and follow up

A close out meeting was held with key YRC staff on 8 May 2024, where a summary of findings was presented by Build Enviro to the Warburton Mountain Bike Destination team. Any outstanding documents identified during the site inspection were requested during the close out meeting. Subsequent documentation was submitted by YRC following the meeting.

5 Findings

5.1 General Findings

The Warburton Mountain Bike Destination CEMP is a comprehensive document, that sets out the environmental risks of the project and their planned management. The project is scheduled to commence construction in July 2024.

All environmental and social documentation and approvals have been completed prior to construction activities commencing, including:

- Comprehensive GIS mapping;
- Traffic management strategy documents;
- Workplace Health and Safety Plan;
- Stakeholder Engagement and Communications Plan;
- Hazardous Tree Inspection Checklist;
- Induction Handbook;
- Construction Induction Agenda; and
- Environmental Risk Register.

5.2 Non-Conformances

There were no non-conformances identified during the audit.

5.3 Opportunities for Improvement

There were a total of 9 opportunities for improvement identified during the audit. These were all of a minor significance. All 9 opportunities were related to the completion of the environmental induction materials and fact sheets. Following the audit, the Induction Handbook for the project has been completed. The Induction Handbook and induction records were provided to the auditor on 23 July 2024. As such all 9 opportunities for improvement have now been closed out.

The full findings of the audit are detailed in Table 1 below.

Table 1: Warburton Mountain Bike Destination CEMP Audit Findings

CEMP Ref	Mitigation measure ID	Requirement	Finding	Opportunity for Improvement	Reference	Status
6.1.4	BM07	Environmental induction to cover all biodiversity values present in the project area.	Environmental induction slides still in development.	Ensure environmental inductions are completed prior to construction and include all biodiversity values present in the project area.	OI1	Closed
6.1.4	BM23	Environmental induction – weeds. Construction staff trained as part of site induction, to identify high threat environmental weeds within the project area and to implement procedures to minimise risk of spread. Training will include distribution of fact sheets, Yarra Ranges Weed ID guide and CaLP Act obligations.	Environmental induction slides still in development. Fact sheets still in development.	Ensure environmental inductions and fact sheets are completed prior to construction and include high threat environmental weeds within the project area and to implement procedures to minimise risk of spread. Distribute fact sheets, Yarra Ranges Weed ID guide and CaLP Act obligations.	OI2	Closed
6.1.4	BM26	Environmental induction – pathogens. Construction staff trained as part of site induction to identify signs of plant pathogens e.g. Myrtle Wilt and to implement procedures to minimise risk of spread.	Environmental induction slides still in development.	Ensure environmental inductions are completed prior to construction and include identifying signs of plant pathogens e.g. Myrtle Wilt and to implement procedures to minimise risk of spread.	OI3	Closed

6.1.4	BM30	Environmental induction – pests. Construction staff trained as part of site induction to identify pest animals and signs of their presence to inform pest management program e.g. locating traps near feral cat sightings. This data will be recorded in the GIS platform for the project.	Environmental induction slides still in development.	Ensure environmental inductions are completed prior to construction and include identifying pest animals and signs of their presence to inform pest management program. Include the data in the GIS platform for the project.	O14	Closed
6.1.4	BM64	Environmental induction – significant flora. Construction staff informed as part of site induction regarding potential presence of significant flora species (including epiphytic / lithophytic species) in order to minimise risk of damage to species or suitable habitat.	Environmental induction slides still in development.	Ensure environmental inductions are completed prior to construction and include potential presence of significant flora species (including epiphytic / lithophytic species) in order to minimise risk of damage to species or suitable habitat.	O15	Closed
6.1.4	BM65	Environmental induction – rare or threatened flora. Construction staff trained as part of site induction to identify rare or threatened flora. Training will include distribution of fact sheets including notes and photos.	Environmental induction slides still in development. Fact sheets still in development.	Ensure environmental inductions and fact sheets are completed prior to construction and include identification of rare or threatened flora. Training will include distribution of fact sheets including notes and photos.	O16	Closed

6.1.4	BM68	Environmental induction – rare or threatened trees. Construction staff trained as part of site induction in tree protection methods, SRZ and root protection methods and identification of hazardous trees.	Environmental induction slides still in development.	Ensure environmental inductions are completed prior to construction and include tree protection methods, SRZ and root protection methods and identification of hazardous trees.	O17	Closed
6.1.4	BM78	Environmental induction – fauna habitat. Construction staff trained as part of site induction to identify signs of native fauna habitation including, but not limited to: 1) Lyrebird display mounds 2) Roosting or nesting sites for forest owls 3) Platypus burrows 4) Habitat indicators for Curve-tail Burrowing Crayfish and Tubercle Burrowing Crayfish 5) Burrows used by ground-dwelling fauna e.g. wombats. Training will include distribution of fact sheets including notes and photos.	Environmental induction slides still in development. Fact sheets still in development.	Ensure environmental inductions and fact sheets are completed prior to construction and include identifying signs of native fauna habitation.	O18	Closed
6.3.4	MM-HM05	Heritage induction. All workers involved in developing the trail must undertake a heritage induction prior to commencing works. This induction	Environmental induction slides still in development.	Ensure environmental inductions are completed prior to construction, presented by a suitably experienced and qualified archaeologist and	O19	Closed

		<p>will be presented by a suitable experienced and qualified archaeologist. The induction will include the following topics:</p> <ul style="list-style-type: none"> • A brief history of the area and types of sites that are present. • The existence of the EES and the management conditions. • Landforms and artefacts that may be present that will indicate an archaeological site. • The contingency measures that need to be followed in the case of an unexpected find. 		<p>include the following topics:</p> <ul style="list-style-type: none"> • A brief history of the area and types of sites that are present. • The existence of the EES and the management conditions. • Landforms and artefacts that may be present that will indicate an archaeological site. • The contingency measures that need to be followed in the case of an unexpected find. 		
--	--	--	--	--	--	--

6 Conclusion and recommendations

The Warburton Mountain Bike Destination CEMP is a comprehensive document, that sets out the environmental risks of the project and their planned management. The project is scheduled to commence construction in July 2024.

There were 9 minor opportunities for improvement identified during the audit, all of which were related to the completion of the induction materials. Following the audit, the Induction Handbook for the project has been completed. The Induction Handbook and induction records were provided to the auditor on 23 July 2024. As such all 9 opportunities for improvement have now been closed out.

No non-conformances were identified at the time of the audit.

Yarra Ranges Council must ensure they comply with the requirements of the EPBC Act referral 2019/8605 approval, dated 17 July 2024 prior to commencement, during construction and during operation of the Warburton Mountain Bike Destination.