

EMERGENCY MANAGEMENT PLAN


OPERATIONAL PLAN

Warburton Mountain Bike Destination

(Southern Network)

PLANNING AND ENVIRONMENT ACT 1987
YARRA RANGES PLANNING SCHEME
CONDITION 7.13 OF THE WARBURTON MOUNTAIN BIKE
DESTINATION PROJECT (SOUTHERN NETWORK) INCORPORATED
DOCUMENT, OCTOBER 2023
ENDORSED REPORT

SHEET 1 TO 44

SIGNED 
MINISTER FOR PLANNING

DATE 16/5/2024

Acknowledgment of Country

Yarra Ranges Council acknowledges the Wurundjeri and other Kulin Nations as the Traditional Owners and Custodians of these lands and waterways. We pay our respects to all Elders, past, present, and emerging, who have been, and always will be, integral to the story of our region. We proudly share custodianship to care for Country together.

1.0	Operational Arrangements	3
1.1	Responsible Agencies	3
1.2	Project staging	7
2.0	Emergency Response	8
2.1	Roles and responsibilities	8
2.2	Emergency Management resourcing	8
3.0	Emergency Access Plan	10
3.1	Emergency access plan	10
4.0	Bushfire Management Measures	11
4.1	Notification of daily fire risk	11
4.2	Mitigation of potential ignition sources	11
4.3	Closure of network on days of Total Fire Ban	14
4.4	Pre-summer bushfire mitigation	14
5.0	Emergency Response Instructions	15
5.1	Lost person / Rider	15
5.2	Mountain bike accident resulting in serious injury requiring medical attention	16
5.3	Medical emergency with potential to result in death	17
5.4	Significant Bushfire Event (includes surrounding area)	18
5.5	Severe Weather Event (Flood, Storm & Landslide)	19
5.6	Extreme temperatures	19
5.7	Accident/incident with animals including snakes	20
6.0	Site Emergency	21
6.1	Decision to close trails	21
6.2	Closure procedures	23
6.3	Control Agency Evacuation Recommendation	24
6.4	Shelter in place options	24
7.0	Emergency Instructions (WMBD ECO Staff and Contractors)	25
7.1	Person is under threat from imminent emergency	25
7.2	Person is impacted by bushfire	26
7.3	Medical assistance by WMBD ECO staff (minor first-aid or welfare issue only)	27
7.4	Extraction of all persons from trails	28
8.0	Appendices	29
8.1	A. Emergency Contact Information	29
8.2	B. Code of Conduct	29
8.3	C. Stage 1 Trail Map	29
8.4	D. Electronic Message Board Locations	29
8.5	E. Emergency Access Plan (Guide)	29
8.6	F. Emergency Access Plan (Maps)	29

1.0 Operational Arrangements

The Warburton Mountain Bike Destination Southern Network (WMBD) Emergency Management Plan (EMP) is made up of two documents:

- Strategic Overview – Providing an oversight of the mountain bike destination project high level emergency management arrangements.
- Operational Plan – Detailing how the EMP will be implemented. This plan includes who will carry out specific tasks and duties, and the response procedures and instructions they will employ.

1.1 Responsible Agencies

Yarra Ranges Council (Council) is responsible for the management of WMBD including:

- Preparing for emergencies.
- Planned and reactive closures of all or part of the trail network.
- Responding to incidents and assisting Control Agencies in the response to emergency situations within training, capacity, and capability considerations.
- Supporting Control Agencies when requested.

This plan recognises responsibilities outlined in the State Emergency Management Plan (SEMP) that Control Agencies (CA) will be responsible for their specified form of emergencies.

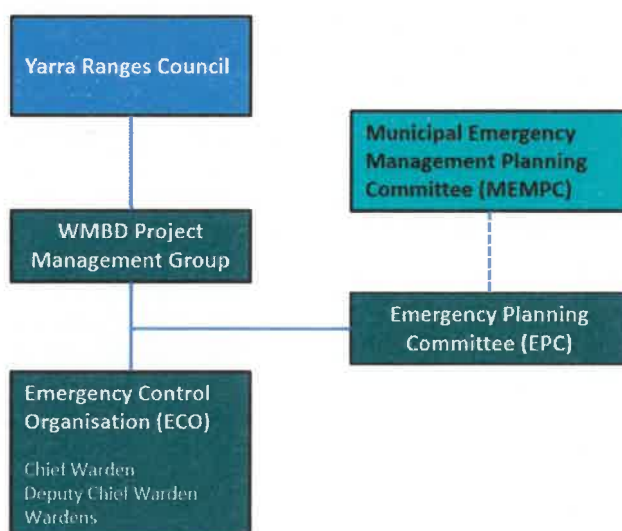
Organisational Structure

Council will establish an Emergency Planning Committee (EPC) and an Emergency Control Organisation (ECO) in line with *AS 3745-2010 Planning for emergencies in facilities*. The Australian Standard normally applies to a facility such as buildings. This system has been adapted in the EMP to respond to the needs of managing a trail network in a public land setting.

Council will appoint staff to act in the EPC and ECO roles.

The Chief Warden and Deputy Chief Warden will be responsible to the EPC to implement the functions of the ECO through further delegating roles to Council staff and construction teams, who will act as Wardens as appropriate and where required.

The flow chart below shows the relationships between Council and emergency management bodies in a planning context.



The WMBD EMP organisational structure aligns with emergency management arrangements, under the *Emergency Management Act 2013*. This includes the Yarra Ranges Municipal Emergency Management Planning Committee (MEMPC), This Plan will be a complementary plan under the Yarra Ranges MEMP.

Emergency Planning Committee (EPC)

A WMBD EPC will be established within six weeks of construction commencing. The EPC shall be responsible to:

- Review EMP regularly (at least annually) to ensure the ability to meet response and resource requirements and adjust emergency plans accordingly. Reviews will also be undertaken if a major incident occurs or changes to environmental or operational conditions alter the risk profile of the site.
- Establish and implement emergency plans and procedures in line with this EMP.
- Coordinate the resourcing, education, and training of personnel to enable WMBD emergency plans to be enacted.
- Ensure that emergency responsibilities and actions are readily identifiable and available to emergency services, trail or event operators, public land managers and other identified stakeholders.
- Appoint a Chief Warden and Deputy Chief Warden to establish an Emergency Control Organisation (ECO) to operate in accordance with the EMP.
- Review and update the bushfire management strategy and associated measures, on an annual basis and prior to the commencement of the declared Fire Danger Period (FDP).
- Monitor data of response occurrences to incidents requiring attendance of local control and support agencies.
- Analyse emergency response data (including Council incident data and relevant emergency service data where available) to determine likely trends in occurrences and provide advice to relevant information to Emergency Response Control Agencies and stakeholders to assist in capability and capacity management.
- Engage with regular user groups including clubs, tourism operators and event managers to support EMP activities.
- Annually undertake a review of associated safety procedures for compliance with the EMP and provide a report to Council.
- Annually undertake a review of compliance with induction and training systems.

The WMBD project is a phased implementation, where concurrent construction and operation of trails will occur, and small stages will be opened sequentially. The EMP will be adaptive to allow the combined expertise of the EPC, in conjunction with emergency service agencies, to develop and refine emergency response and resourcing issues as the project matures.

The table below shows the EPC and their incumbent positions within Yarra Ranges Council. The EPC Chair will invite member agencies from the Yarra Ranges MEMPC to participate in meetings in an advisory capacity.

Table 1: EPC Appointment and Delegates

EPC Position	EPC Appointee	Current council role
Chair	Lisa Keedle	Executive Officer Emergency Management
Deputy Chair	Matt Harrington	WMBD Executive Project Manager
Committee Members	Phil Murton	Manager Recreation, Parks and Facilities
	Ben Waterhouse	Manager Procurement, Risk and Governance
	Scott Chancellor	WMBD Project Manager
	David Bartlett	WMBD Project Officer
Attending Agency	Advisory Delegate	Agency Rank /Position
DEECA	TBA	TBA
VICPOL	TBA	TBA
VICSES	TBA	TBA
Ambulance Victoria	TBA	TBA
CFA	TBA	TBA

Emergency Control Organisation (ECO)

The primary role of the ECO is to enact the responsibilities and procedures of the EMP to protect people from harm. ECO will apply the State Emergency Management Priorities:

- Life and safety.
- Communication of information and warnings.
- Protection of critical infrastructure.
- Environment

ECO Wardens will be appointed by Council. Appointed Wardens will undergo training appropriate to their role.

Instructions given by the Chief Warden or Deputy Chief Warden, or any other ECO personnel acting under the authority of this EMP, shall take precedence over normal day to day activities.

Functions of the ECO

The ECO will:

- Monitor, review, prepare for and enact Emergency Response Plans and procedures associated with this EMP.
- Ensure WMBD assets are maintained appropriately to support the delivery of this EMP.
- Liaise with relevant land managers to address access and egress issues with road and track assets not managed by Council.

Roles and responsibilities – Chief Warden

The Chief Warden will be responsible for overseeing the implementation of the EMP. The Chief Warden will fulfil the responsibilities of the EMP during normal business hours Monday to Friday. After hours this responsibility will transfer to the after-hours council duty officer, who is contactable via the Emergency Contact number 1300 368 333.

Pre-emergency

- Monitoring warnings and advice from emergency services via the VicEmergency website and App and other local communication arrangements (where applicable).
- Arranging briefings, exercises, and training drills.
- Maintain a register of emergency control organisation (ECO) members.
- Arrange training for persons responsible for implementing emergency procedures.
- Ensure transport and relevant equipment is available for relevant ECO staff.
- Ensure that emergency communication contact details are up-to-date and ensure communication systems are fully functional.
- Review the effectiveness of emergency procedure exercises and arrange for any changes or amendments to the EMP as determined to be required.
- Implement procedural improvements.

Emergency:

- Monitoring warnings and advice from emergency services via the VicEmergency website and App and other local communication arrangements (where applicable).
- Ascertain the nature and location of the emergency in collaboration with the ECO and/or emergency services.
- Liaise with emergency services and land managers and advise wardens on a required course of action.
- Oversee and coordinate ECO staff responses during an emergency.
- Assist control and support agencies where possible.

Roles and responsibilities – Deputy Chief Warden

The Deputy Chief Warden will assume the responsibilities normally carried out by the Chief Warden if the Chief Warden is unavailable. The Deputy Chief Warden will be on duty during normal business hours Monday to Friday. After hours this responsibility will transfer to the after-hours council duty officer, who is contactable via the Emergency Contact number 1300 368 333.

Where the Chief Warden is present, the Deputy Chief Warden will assist the Chief Warden as directed. Otherwise, the general duties of the Deputy Chief Warden will include:

Pre-emergency:

- Monitoring warnings and advice from emergency services via the VicEmergency website and App and other local communication arrangements (where applicable). Ensure information on emergency response procedures is available to visitors.
- Monitor conditions for access/egress at trail heads during high visitation periods.
- Ensure personal proficiency in operation of communication equipment.
- Ensure the emergency communication system is functional. This includes online emergency notification systems, radios, mobile phones and signage.
- Assist wardens in emergency exercises and training drills.

Emergency:

- Monitoring warnings and advice from emergency services via the VicEmergency website and App and other local communication arrangements (where applicable).
- Notify appropriate ECO members and relevant council staff of relevant local warnings and advice.
- Ascertain nature and location of an emergency so that the appropriate emergency response is undertaken by the ECO.
- Ascertain conditions at trail heads to determine safety for riders.
- Oversee communications, warnings, and response to control agency advice as appropriate.
- Communicate instructions and information to ECO wardens and relevant council staff.
- Record a log of the events that occurred during an emergency response.

Roles and responsibilities - Duty Wardens

- Assist the Chief Warden or Deputy Warden with their duties as requested.
- Assist visitors as required to ensure understanding of and compliance with safety rules and emergency procedures.
- Monitor and inform the Chief Warden or delegated deputy of safety issues within WMBD Southern Network as appropriate.
- Remain contactable by other wardens and relevant operational or line supervisor.

1.2 Project staging

The WMBD will be constructed and opened over a series of stages as detailed below:

Table 2 – Trail Staging Summary

Stage	Trails	Km/Stage	Construction Timeframe	Approximate Opening
1A	11, 12, 13, 14, 15, 16, 18, 19, 20, 21, 43, 44	30	6 months	Late 2024
1B	22, 23, 27, 28, 29, 30, 31, 32, 33,34, 35, 36, 37, 38, 48, 65.	34	6 months	Early 2025
1C	24, 39, 40, 41, 52, 53	20	4 months	Mid 2025
1D	17, 42, 51, 59, 62, 63	15	4 months	End 2025
2A/2B	26, 49, 50, 54, 55, 56, 57, 58, 60, 61, 64, 66	25	12 months	2026 onwards

The staged construction and opening approach allows Yarra Ranges Council to maintain ongoing consultation with all stakeholders, including emergency service agencies, prior to full operation of the mountain bike destination.

Prior to the opening of each stage the Emergency Planning Committee (EPC) will review the procedures and practices contained within the EMP and liaise with emergency service agencies and stakeholders. This review process prior to opening of stages will include:

- Documenting of "as constructed" trail information including exact alignment/grading.
- Liaise with EM agencies to ensure appropriate resources, equipment and procedures are in place prior to opening a new stage of the project for operations.
- Analyse emergency response data (including Council incident data and relevant emergency service data where available) to determine likely trends in occurrences and provide advice to relevant information to Emergency Response Control Agencies and stakeholders to assist in capability and capacity management.
- Formal naming of trails.
- Mapping of as constructed arrangement and gazetting of trail name/location on VicMAPS.
- Review and updating of Emergency Access Information – refer to Operations Plan.
- EM agencies will be notified prior to the opening of each stage.

2.0 Emergency Response

2.1 Roles and responsibilities

The roles and responsibilities for the relevant emergency control agencies and specific control and support agencies are defined within Tables 9 and 10 of the State Emergency Management Plan (SEMP).

Table 9 names the Control Agencies that lead response activities against a specific form of emergency. Control Agencies are responsible for coordinating actions against a specific emergency and establishing management arrangements for an integrated response to the emergency.

Table 10 names the agencies that may participate in a supporting role in response activities. As Lead Response Support Agencies, they may support the response to an emergency which falls in their functional area, through the provision of services, personnel, and materials.

Council will support a control agency when requested to do so. All tasks and requests for support will be assessed by the Chief Warden to ensure Council has the capacity and capability to fulfil the task or activity requested. Assessment of any requests for field based operational tasks or activities will use an OHS risk-based approach.

Council will act as the responsible agency for the below hazards.

Table 3: Emergency/Hazards where Council is the Responsible Agency.

Emergency/Hazard	Responsible Agency (RA)	Support Agency (SA)
Mountain bike accident resulting in minor injuries, but no medical attention required.	Council (RA)	Ambulance Victoria
Anti-social behaviour and user conflict.	Council (RA)	VICPOL
Damage to structures, track network and/or environment.	Council (RA)	Not applicable

2.2 Emergency Management resourcing

The EPC will plan resource requirements to be implemented as part of the project to support its operations and construction teams. These resources will be in place before construction commences.

Given the staged construction phases of opening, an adaptive management approach will be adopted. The EPC will liaise with control agencies to ensure appropriate resources, equipment and procedures are in place prior to opening a new stage of the project for operations.

The EPC will liaise with emergency service control agencies regularly throughout the development and operations of the project and provide information on visitation data, incident data, events, trail usage and include agency representatives as advisors, when required. This information will be used by emergency services to assist in planning resource requirements, including consideration to volunteer capacity where appropriate.

Human resources

Roles within the ECO will be filled by Council staff:

- Chief Warden.
- Deputy Chief Warden.
- Duty Warden.

On days of construction and trail operations there will be a minimum of one Warden designated by name and rostered to be available on duty or on call (Typically on duty 9am-5pm weekdays and on call weekends and after hours).

The Chief Warden will monitor rider numbers and ensure that non-emergency workload of the Wardens does not impede their capacity for emergency response.

The Chief Warden will monitor weather conditions and ensure that staff are available on-site to enact closure procedures. This will include the rostering of staff on weekends and after hours as necessary.

Physical resources

Vehicles:

- Council E-bikes (2) will be available for rider patrols, and search capacity.
- 4WD Dual Cab Utility Motor vehicle.

Equipment:

- Map reading and navigation tools.
- Protective clothing and safety equipment.
- Mobile smart phones one per WMBD staff member.
- UHF or MMR handheld 2-way radios sufficient for all ECO members on duty.
- Remote area first-aid kits.
- One all-terrain stretcher capable of use in the trail network.

Future resourcing

The EPC will review future emergency management human and physical resource requirements on an ongoing basis, in consultation with the ECO and emergency services.

Any new items of equipment will be trialled and evaluated prior to going into operational use. Training and exercising of equipment, procedures and safe operating techniques are essential for maintenance of safety in the workplace.

Emergency Marker System

Emergency 'marker' systems refer to a system used by 000Vic to locate injured riders or persons requiring assistance. Location markers are placed on trails to assist emergency services to find and get to incidents quickly.

Each marker has a unique code that is linked to the 000Vic computer-aided dispatch system in Victoria. When 000 is called, knowing the location of a person-in-distress using the emergency marker system, can help emergency services quickly determine the GPS coordinates, as well as nearest road access point and other navigational data to help emergency responders.

To supplement the Emergency Marker System, trail distance markers will be placed along trails at maximum 500m increments, allowing an additional method for locating riders. The trail distance markers will state the closest emergency marker so that they can be linked.

Many riders also carry a smartphone with GPS functionality, providing a back-up mechanism for locating riders in an emergency.

See Appendix F: Emergency Access Plan (Maps) for emergency marker and trail distance marker locations.

3.0 Emergency Access Plan

3.1 Emergency access plan

Access to the trail network for emergency response is primarily via the existing network of roads and access tracks to the closest trail intersection point and then via foot or other means along the mountain bike trails.

Council has worked with VicPol, CFA, VICSES, AV and DEECA to develop an Emergency Access Plan (EAP) for the WMBD - Southern Network. The EAP includes detailed maps of the destination and a table of access information for each trail. The EAP will be updated in collaboration with DEECA and emergency services prior to the opening of each of the stages of the destination.

The EAP will be provided in electronic format to relevant members of the MEMPC for dissemination to their respective organisations at least annually or when significant changes to the document occur. Hard copies will be kept at the Wesburn Park Trail Head.

The EAP will be reviewed and updated at the same time as the EMP.

See Appendix E Emergency Access Plan (Guide).and Appendix F: Emergency Access Plan (Maps) for details.

4.0 Bushfire Management Measures

Bushfire management measures will be implemented through the EMP in compliance with a number of legislative requirements. The EMP will at all times comply with *AS 3745-2010 Planning for emergencies* in facilities and will also comply with the *Forests (Fire Protection) Regulations 2014*, for construction and operational activities. A number of requirements from *The Country Fire Authority (CFA) Act 1958* and its subordinate *CFA Regulations 2014* will apply to land within the Country Area of Victoria as opposed to the Crown Land estate. This will be relevant to municipal and private land associated with WMBD - Southern Network trail heads, where these are not located on Crown land.

In addition to the broader emergency management measures contained within the EMP, specific bushfire management measures to reduce bushfire risk are outlined to:

- Notify construction and operational staff, along with mountain bike riders and visitors to the area, the daily fire danger risk during the Declared Fire Danger Period. The information will follow the Australian Fire Danger Rating System (AFDRS), including action statements where appropriate.
- Mitigate potential ignition sources from construction or operational activities.
- Clearly articulate the need to close the destination on days of Total Fire Ban (TFB).
- Ensure no construction works occur on days of TFB.
- Have in place standard operating procedures for closing tracks and trail heads.
- Provide for targeted pre-summer bushfire mitigation, e.g. vegetation management at trail heads.

The aim of the EMP is to describe measures that will be used to inform persons located on/or planning to visit the destination of the procedures for:

- Alerting them to potential trail closures.
- Evacuating the destination in the event of an emergency.
- Respond to a bushfire that occurs on days that the WMBD trails are open.

4.1 Notification of daily fire risk

The Chief Warden is responsible for ensuring general warnings of project closure due to fire danger risk rating or severe weather warnings are communicated to staff, operators, and visitors to WMBD.

Communication will include daily staff briefings, WMBD website, destination signage and social media platforms. The WMBD website and online messaging will encourage visitors to consult the website prior to arrival.

Notification of daily fire danger risk rating and TFB declaration, including closure status, will be based on the forecast for the Central Fire District for that day. The information will follow the Australian Fire Danger Rating System (AFDRS), including action statements where appropriate.

The Chief Warden will be responsible to communicate closures to shuttle bus and commercial operators.

4.2 Mitigation of potential ignition sources

Mitigation of potential ignition sources is an important bushfire management measure. Ignition sources such as open flames, sparks, or electrical malfunctions, can initiate a fire in vegetation during periods of high heat and low humidity. By mitigating these potential ignition sources, the probability of accidental fires starting and spreading is reduced.

Ignition sources during both construction and operational phases could include:

- Hot works such as metal grinding or welding during the construction of trails or bridges.
- Presence of motorised machines with hot exhausts.
- Workers or trail users cooking or smoking at trailheads, or on trails.

Specific mitigation and contingency measures for bushfire during construction, are outlined below:

1 Construction crews working during the declared Fire Danger Period

At the start of each working week (or any other agreed schedule) provide reports to relevant land managers (i.e. DEECA or Council) stating the trails being worked on, their location and the number of personnel working on each. Report is to provide contact details for key personnel including Site Manager and relevant work team leaders. For days of AFDRS High and above the construction Site Manager must liaise with the Chief Warden on the nature of works being undertaken.

At the start of each working week, check the weather forecast and note any potential elevated fire risk/spike days (i.e. elevated fire risk/spike days are those with high temperatures, low humidity, and high winds. Check to ensure a TFB has not been declared before commencing works for the day.

During the Fire Danger Period, each construction crew must have the following equipment on hand at all times:

- Viable, functioning two-way communications – e.g. mobile phone, UHF radio or satellite phone. Each crew needs to be able to contact other work crews, ECO Warden, and external contacts. Each crew needs to remain contactable at all times.
- One filled and operational knapsack pump or charged air-water extinguisher (not less than 9L capacity).
- Minimum of two rake hoes.

During the Fire Danger Period, the following protocols apply:

- On days declared as a Total Fire Ban - No work is to commence.
- On days with a fire danger rating of High – Contact the Chief Warden to discuss suitability of the conditions to commence or continue working.
- Remain vigilant and respond to changes in weather conditions. Be alert for warnings via phone and monitoring the VicEmergency App.

Prior to starting chainsaw work:

- Chainsaws are not to be used on days of TFB.
- Ensure chainsaws are operable and in good order and working condition. Check exhaust system and muffler.
- Clear the immediate work area of twigs, leaves, scrub and other flammable material before commencing operation.
- Ensure that a knapsack or air-water type extinguisher is on hand, filled, serviceable and ready for use.

2 Appropriate chemical handling and fire suppression equipment

- All chemical storage and handling will be in accordance with material SDS, with appropriate firefighting equipment (e.g. specific fire extinguisher types) identified in the SDS to be maintained on-site.
- Adequate fire suppression equipment should be on-site as per the requirements of Regulation 111 of the Country Fire Authority Regulations 2014.
- Fire extinguishers to be kept in all vehicles, as well as the project site office.
- Fuel to be stored in appropriate storage containers and correctly labelled.
- Fuel storage to be limited to less than 100 litres on construction sites.

3 Work methodology

- No burning of any substances, including wooden debris or products, will be undertaken as part of this project.
- Minimum of one filled and operational knapsack pump or charged air-water extinguisher (not less than 9L capacity) to be available where any hot works or machinery is operating.
- Smoking to be prohibited on construction sites.

Specific monitoring and reporting measures during construction, will enable a quality oversight for bushfire management are outlined below:

4 Monitoring and reporting

Objective:

- To minimise bushfire risk and implement contingency measures where required, and in a timely manner.

Performance indicators:

- Bushfire risk is not increased due to project works.
- Works at the site do not impact bushfire risk or fire management activities.
- Adequate fire protection equipment on-site.
- No machinery which could cause a spark to be operated on days of TFB.

Monitoring (parameters, location and frequency)

- Monitoring of fire bans and fire danger ratings.
- Monitoring of planned burns.

Reporting:

- Information pertaining to inspections, monitoring and pre-emptive measures will be recorded within daily inspection checklists and the fire weather logbook.
- Any non-conformances or other environmental issues are to be documented and reported to Yarra Ranges Council and rectified in a timely manner.

Contingency measures:

- On days declared as a Total Fire Ban - No work is to commence.
- On days with a fire danger rating of High – Check with Chief Warden before commencing work.
- Remain vigilant and respond to changes in weather conditions.
- If activities spark a fire, immediately implement fire suppression methods and contact emergency services. Emergency services must be notified to attend, even if you have extinguished the fire yourself.
- At all times, be prepared to evacuate the site.

Responsibilities:

- Overall bushfire prevention, preparation and response is the responsibility of the Chief Warden.
- All staff who are required to perform tasks that may impact or be impacted by bushfire during their work are responsible for implementing appropriate bushfire control measures.

4.3 Closure of network on days of Total Fire Ban

The WMBD will be closed to visitors on days of TFB and no construction works will be conducted. Due to the large area of trails, tracks and public roads extending throughout the WMBD giving multiple points of access to trails, complete physical closure of such an extensive network is not practical.

Procedures for closing tracks and trail heads will be in part a 'virtual' closure and rely largely on public and community messaging and other forms of notification. WMBD closure measures will include:

- Provision of information on the WMBD website and social media including the dangers of ignoring the advice.
- Physical barriers and signage at trailhead entries.
- Signage at appropriate distances back on the main roads leading to the WMBD trailheads (e.g. at Seville, Yarra Junction).
- Closure of shuttle bus operations.

The Chief and Deputy Wardens will be on duty during normal business hours Monday to Friday. The Chief Warden shall monitor the weather forecast and if the forecast triggers or is likely to trigger a closure, appropriate resources will be rostered on after hours or on weekends to implement the closure, via both online and physical measures.

4.4 Pre-summer bushfire mitigation

Mitigation measures

- Landscape fuel hazard mapping. DEECA undertakes landscape fuel hazard mapping for surrounding forest to monitor fuel build up and support fire modelling activities.
Overall Fuel Hazard (OFH) is maintained ideally at Moderate and should not exceed OFH of HIGH within the network area. Areas of OFH HIGH will be programmed for fuel management works by the land manager, in consultation with Yarra Ranges Council (YRC) and the WMBD EPC.
- Mowing /slashing – in conjunction with MFMPC Annual Works Program. Council will prepare a pre-summer bushfire mitigation plan for the project area and identify specific targeted works for inclusion in the MFMPC annual works program. This will include the mechanical treatment of vegetation such as mowing and slashing around trailheads, buildings and infrastructure to maintain appropriate fuel modified zones in those areas.

5.0 Emergency Response Instructions

Emergency Response Instructions are provided for all High and Extreme Risks as identified in the Mitigation table in *WMBD EMP Strategic Overview Part 3.3*. Low and Medium risks do not have emergency response instructions and are dealt with through mitigation actions as listed in table 5 of the Strategic Plan (Risk Mitigation Measures)

Any response to potential emergencies will be carried out by the appropriate Control/Responsible Agency, as listed in table 2 and table 3.

5.1 Lost person / Rider

Preparation:

- Clear trail maps provided to trail users with identifiable track numbers and names.
- Emergency Access Plan for emergency services indicating access points and staging areas.
- Emergency marker posts installed/maintained.
- Code of conduct signage outlining user guidelines.

Response:

- Call received by Triple Zero Victoria – transferred to Victoria Police (VICPOL) relating to a lost rider.
- As much information as possible is received relating to the missing rider including details of persons, extent of injury, and last known location.
- VICPOL to respond to nearest access point of reported or last known location.
- Upon arrival at scene assess any resources and support required for search.
- VICPOL to coordinate the search efforts using available resources in accordance with operational procedures.
- VICPOL to request additional resourcing and support from VICSES if required.
- ECO to provide support where requested.

Site Specific Considerations:

- Accessibility & Terrain.
- Methods of recovery of patient from trail.

Management Actions:

- Develop and maintain first aid skills of staff as per staff development plans.
- Ensure awareness of staff of relevant policy and procedure.
- Ensure risk mitigation programs and monitoring are in place.
- Ensure appropriate internal reporting procedures are followed.
- Ensure maintenance schedule is adhered to for trail signage and emergency markers.

5.2 Mountain bike accident resulting in serious injury requiring medical attention

Preparation:

- Inspection and maintenance of trails to limit risk of trail condition causing accident.
- Signage indicating correct trail usage.
- Clear trail maps provided to trail users with identifiable track numbers and names.
- Emergency Access Plan for emergency services indicating access points and staging areas.
- Emergency marker posts installed/maintained.

Response:

- Call received by Triple Zero Victoria – relating to an accident/emergency incident at WMBD requiring response by Ambulance Victoria (AV).
- As much information as possible is received relating to the injured rider including details of persons, extent of injury, and location.
- If location of injured person is identified as accessible on trail map, AV is dispatched to the incident scene.
- If location of injured person is identified as inaccessible on trail map, AV is dispatched to the nearest access point or staging area.
- On arrival patient is assessed and treated by AV.
- If location cannot be accessed by AV, details of incident to be passed to other services to assist with retrieval.
- In cooperation with other services (VICPOL, VICSES, WMBD ECO, DEECA) retrieve patient and transport to identified health service location.
- Chief Warden to be contacted for further assistance if required.
- Scene to be secured to minimise further risk if possible.
- Continue to provide assistance if requested to do so.

Site Specific Considerations:

- Accessibility & Terrain.
- Methods of recovery of patient from trail.

Management Actions:

- Develop and maintain first aid skills of staff as per staff development plans.
- Ensure awareness of staff of relevant policy and procedure.
- Ensure risk mitigation programs and monitoring are in place.
- Ensure appropriate internal reporting procedures are followed.
- Ensure maintenance schedule is adhered to for trail signage and emergency markers.

5.3 Medical emergency with potential to result in death

Preparation:

- Regular maintenance and trail inspection to limit risk of trail condition causing accident.
- Signage around correct usage.
- Clear trail maps provided to trail users with identifiable track numbers and names.
- Emergency Access Plan for emergency services indicating access points and staging areas.
- Emergency marker posts installed/maintained.

Response:

- Call received by Triple Zero Victoria – relating to an accident/emergency in the WMBD requiring response by Ambulance Victoria (AV) and VICPOL.
- As much information as possible is received relating to the missing rider including details of persons, extent of injury, and last known location.
- If location of injured person is identified as accessible on trail map, AV is dispatched to the incident scene.
- If location of injured person is identified as inaccessible on trail map, AV is dispatched to the nearest access point or staging area.
- On arrival patient is assessed and treated by AV.
- If location cannot be accessed by AV, details of incident to be passed to other services to assist with retrieval.
- In cooperation with other services (VICPOL, VICSES, WMBD ECO, DEECA) retrieve patient and transport to identified health service location.
- Chief Warden to be contacted for further assistance if required.

Site Specific Considerations:

- Accessibility & Terrain.
- Methods of recovery of patient from trail.

Management Actions:

- Develop and maintain first aid skills of staff as per staff development plans.
- Ensure awareness of staff of relevant policy and procedure.
- Ensure risk mitigation programs and monitoring are in place.
- Ensure appropriate internal reporting procedures are followed.
- Ensure maintenance schedule is adhered to for trail signage and emergency markers.

5.4 Significant Bushfire Event (includes surrounding area)

Preparation:

- Fuel mitigation works and general preparedness (including training) is undertaken as per FFMV Fire Operation Plans and readiness and response requirements.
- Firefighting equipment is checked for readiness and response.
- Water access points are checked and confirmed as available.
- Pre fire season interagency liaison is also conducted at the local level.
- Trails will be closed on days when a Total Fire Ban has been declared.

Response:

- For observed fire starts, immediately report fire to Triple Zero Victoria. Follow all advice of fire agency. Include consideration of need to evacuate riders from trails.
- On notification of a bushfire in a region neighbouring the WMBD, the on-duty Warden is to seek advice from FFMV Duty Officer or CFA, on need to initiate closure of the WMBD trails.
- For all fire scenarios, the on-duty Warden is to assess the situation and have appropriate discussions with relevant fire agency.
- Activate bushfire emergency response procedures.
- Follow all advice of fire agency personnel on site.
- ECO staff to provide support where required.

Site Specific Considerations:

- Fuel conditions around trail heads.
- Smoke impact on riders.
- Visitor presence at trail heads.
- Unattended cars left in carpark.

Management Actions:

- Ensure awareness of staff of relevant policy and procedure.
- Ensure staff are included in fire training.
- Ensure risk mitigation programs and monitoring are in place.
- Ensure appropriate internal reporting procedures are followed.
- Ensure maintenance schedule is adhered to for trail signage and emergency markers.

5.5 Severe Weather Event (Flood, Storm & Landslide)

Preparation:

- The WMBD and YRC communication channels (website & social media) and onsite signage will be used to advise visitors of a severe weather warning for the day.
- WMBD staff monitor weather forecasts issued by the Bureau of Meteorology and utilise the Watchzone functionality of the VicEmergency App.
- Activate pre-emptive closures in accordance with closure triggers in “Decision to close” section.

Response:

- WMBD will be closed at trigger points listed in “Decision to close” section.
- The on-duty Warden may request a separate Spot Weather Forecast via BoM for the Wesburn /Warburton area.
- The on-duty Warden assesses hazard and liaise with emergency services.
- If there is a threat to WMBD users, assess the need to close the trail network as per closure procedure.
- Assess the need for additional support.

Site Specific Considerations:

- Accessibility & Terrain.
- Local weather.

Management Actions:

- Ensure all closure procedures are implemented.
- Monitor trail heads for compliance with closure.

5.6 Extreme temperatures

Preparation:

- The WMBD and YRC communication channels (website & social media) will be used to advise visitors of the weather forecast for the day when extreme (>40deg C, <-5deg C) temperatures are predicted.
- Provide onsite signage to encourage riders to monitor weather conditions and to prepare personal protective measures.

Response:

- Forecast extreme temperatures from the Bureau of Meteorology will be used by the ECO to advise and prepare riders for their safety.
- If extreme temperature warnings are not issued by the Bureau of Meteorology where there is a possibility of localised extreme temperatures, WMBD and YRC communication channels (website & social media) and onsite signage will be used to advise visitors of local risk potential.

Site Specific Considerations:

- Terrain differential.
- Aspect.
- Extreme temperatures.

Management Actions:

- Ensure proactive prevention and response.
- Ensure appropriate rider education on fatigue, dehydration, and exposure to extremes of temperature (high/low).

5.7 Accident/incident with animals including snakes

Preparation:

- Clear trail maps provided to trail users with identifiable track numbers and names.
- Emergency Access Plan for emergency services indicating access points and staging areas.
- Emergency marker posts installed/maintained.

Response:

- Call received by Triple Zero – relating to an accident/emergency incident at WMBD requiring response by Ambulance Victoria (AV).
- As much information as possible is received relating to the injured rider including details of persons, extent of injury, and location.
- If location of injured person is identified as accessible on trail map, AV is dispatched to the incident scene.
- If location of injured person is identified as inaccessible on trail map, AV is dispatched to the nearest access point or staging area.
- On arrival patient is assessed and treated by AV.
- If location cannot be accessed by AV, details of incident to be passed to other services to assist with retrieval.
- In cooperation with other services (VICPOL, VICSES, WMBD ECO, DEECA) retrieve patient and transport to identified health service location.
- Chief Warden to be contacted for further assistance if required.
- Continue to provide assistance if requested to do so.

Site Specific Considerations:

- Accessibility & Terrain.
- Methods of recovery of patient from trail.

Management Actions:

- Develop and maintain first aid skills of staff as per staff development plans.
- Ensure awareness of staff of relevant policy and procedure.
- Ensure risk mitigation programs and monitoring are in place.
- Ensure appropriate internal reporting procedures are followed.

6.0 Site Emergency

In response to hazards or emergencies there may be requirements for the trail network to be closed, cleared of visitors, or evacuated.

Pre-emptive Full or partial closure. Pre-emptive closure the day before forecast conditions that may affect the safety of riders or visitors to the site.

Unplanned Full or partial closure. Unplanned reactive closure on a day that trails are open, but now need full or partial closure due to unforeseen circumstances or late notification of a hazard or threat.

Control agency led evacuation. Ordered by a control agency responding to an immediate threat or emergency incident at the site.

The procedures for responding these scenarios are set out below. ECO Wardens and relevant council staff will implement the procedures as set out in this EMP and will follow the directions of emergency services control agencies, assisting where requested.

6.1 Decision to close trails

Triggers for emergency response to an incident or threat requiring closure of the trail network are set out in table below.

The Chief Warden or Duty Warden will monitor conditions each day and liaise with agency information sources to be advised of any likely warnings. This includes monitoring the Vic Emergency App for fire incidents within a 30 km radius of the network on elevated fire danger days. Upon notice of a threat or emergency event, the Duty Warden will consult with the appropriate control agency on the need for closures. The table below provides guidance on consultation and closure triggers.

Table 4 – Trigger points for consultation and trail closures.

Emergency/Hazard	Trigger point for Control Agency consultation	Trigger point for WMBD closure
Bushfire	Fire reported within 30km of WMBD on elevated fire danger days.	Total Fire Ban.
Severe Weather	Severe Weather Readiness and Activation Level - High	Severe Weather Readiness and Activation Level - Extreme
Riverine Flood	Major flood warning Yarra River (Upper).	No defined trigger.
Landslide	Forecast rain of 50mm per hour or more.	Note: WMBD will be closed if greater than 25mm of rain is received in 24hrs.

Bushfire

Where there is imminent threat from bushfire to riders in the trail network, evacuation will be the decision of the Control Agency in consultation with VICPOL. ECO wardens and relevant council staff will assist control or support agency, where requested, with available local knowledge and resources.

Severe Weather

The WMBD duty Warden will be guided by information contained in the BOM Thunderstorm Forecast, Severe Weather Warnings and Severe Thunderstorm Warnings and is to lead to discussions with VICSES Incident Controller or VICSES Regional Duty Officer regarding closure options.

VICSES utilise the following Severe Weather Readiness and Activation Levels:

Table 5: Severe Weather Readiness and Activation Levels:

Domain	High	Extreme	Catastrophic
Wind average/Wind gust	60-80km/hr possible / 101-115km/hr possible	60-80 km/hr likely / 101-115 km/hr likely	80+ km/hr likely / 115+ km/hr likely Tornado and Microburst likely
Rain and flooding	Heavy rainfall and Flash flooding possible	Heavy rainfall likely, intense rainfall possible and flash flooding likely	Intense rainfall and flash flooding likely
Hail	3-5 cm possible	3-5 cm likely	Giant hail 5+ cm likely

Riverine Flood

The emergency services use a three-tiered scheme that classifies river flooding.

Minor flooding

If the water level reaches the minor flood level, it causes inconvenience. Low lying areas next to water courses are inundated. Minor roads may be closed and low-level bridges submerged. In urban areas flooding may affect some backyards and buildings below floor level as well as bicycle and pedestrian paths.

Moderate flooding

If the water level reaches the moderate flood level, the area of inundation is larger. Main traffic routes may be affected. Some buildings may be affected above floor level. Evacuation may be required.

Major flooding

If the water level reaches the major flood level large areas are inundated. Many buildings may be affected above floor level. Properties and towns are likely to be isolated, utility services affected, and roads closed to traffic. Evacuation may be required.

The Chief Warden will be guided by flood warning information contained in the weather forecasts and also in discussions with VICSES Incident Controller or VICSES Regional Duty Officer regarding closure options.

Landslide

To determine the need for closures, considerations should be given to catchments that are:

- Already saturated with little or no initial losses expected with additional rainfall.
- Recent fire affected landscapes.
- Observed and reported land movement.
- Known mapped landslide risk or previously impacted areas.

Where a Severe Weather Warning has been issued by the BoM for 'Likely' flash and/or riverine flooding, and predicted rainfall exceeds 50 mm per hr, consideration should be given to closure of the trail network. The Chief Warden will consult with a VICSES Incident Controller or VICSES Regional Duty Officer regarding closure options.

6.2 Closure procedures

A decision to fully or partially close the trail network may be a pre-emptive action taken by the WMBD ECO warden, or reactive to identified threat or hazard. VicPOL is the responsible authority for evacuation under State emergency management planning arrangements.

The Chief Warden will monitor weather conditions and ensure that Wardens are available on-site to enact closure procedures. This will include the rostering of staff on weekends and after hours where the forecast either triggers or looks to have a high likelihood of triggering a closure. In the event that a closure trigger event occurs after hours or on the weekend that was not foreseen, Council's on EM org. readiness will alert the Chief Warden who will roster on resources to implement the closure via both online and physical measures.

Where an immediate hazard exists or trigger points for closure are reached, the duty Warden will take the necessary steps to affect the closure. The Warden will communicate with the appropriate agency or department regarding the trail closure.

The Chief Warden is responsible for communicating by direct engagement, phone or radio, the closure and warning decisions to all staff on duty as soon as possible after the decision has been made. ECO wardens and relevant council staff will carry out the following tasks for:

Planned closure

Day Prior:

- Advise all staff, contractors, commercial operators, tour operators and permit holders of the closure.
- Advise YRC Call Centre of the change of conditions.
- Update website.
- Release closure message across all social media platforms.
- Close trail network access gates at end of day.
- Update VMS messaging as appropriate.

Day of Closure: (Where safe to do so)

- Reiterate to all staff, contractors, commercial operators, tour operators and permit holders of the closure.
- Check security of gate closures.
- Monitor trail network access points for closure compliance.
- Check VMS is still appropriate for the day.
- Assist control and support agencies where directed.

Unplanned or Reactive Closure requiring clearing of visitors

- Advise all staff, contractors, commercial operators, tour operators and permit holders of the closure.
- Advise YRC Call Centre of the change of conditions.
- Update website.
- Release closure message across all social media platforms.
- Close trail network access gates.
- Update VMS messaging as appropriate.
- Where determined safe to do so in consultation with any relevant control agency and determined to be time sensitive, patrol trail network access points, trail junctions and road crossings to advise riders to return to trail heads.
- Assess the likely number of riders on the trails at the time of the emergency and advise emergency service agencies where appropriate.

The WMBD will utilise Council's existing communication tools including Council website and social media to communicate full or partial closure of the trail network. Electronic variable message signs (VMS) will be placed at key main road locations and will be activated to inform users of the fire danger ratings, severe weather alerts and trail closures, see Appendix D: Planned Location of Variable Message Signs (VMS).

6.3 Control Agency Evacuation Recommendation

WMBD is susceptible to a range of environmental threats such as bushfire, thunderstorm, heavy rain and landslide, damaging winds, or extreme cold that may require an evacuation recommendation to be given by a control agency. Control agency evacuation recommendation is where all riders, visitors and staff are advised to leave the area of danger. In the event of an evacuation recommendation being given by a control agency, direction from authorised control agency personnel should be followed and WMBD ECO staff will assist where appropriate.

WMBD ECO staff will be familiarised with control agency-led evacuation arrangements through the annual exercise of this EMP. ECO wardens and relevant council staff will support agency-led evacuation processes by providing:

- Provision of warnings and information via Council's website and communication channels.
- Local knowledge of the trail network and access points.
- Estimates of visitor numbers and likely locations.
- Emergency Access Plan.

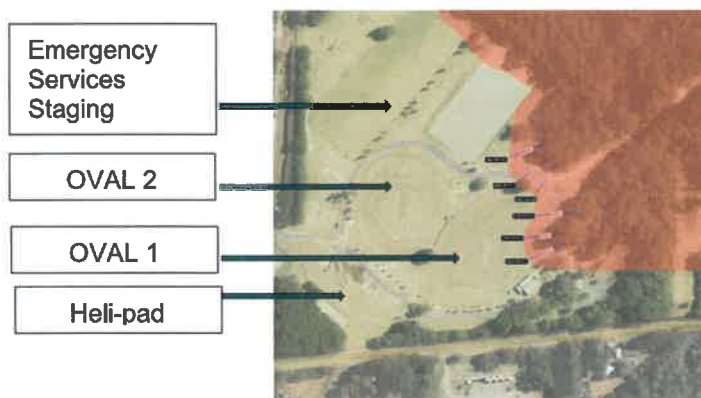
6.4 Shelter in place options

WMBD will be closed on days of Total Fire Ban.

In the event of an evacuation when the WMBD is operational, the aim of evacuating the WMBD is to move visitors and riders away from a potential threat to a safer location which will be determined by Emergency Services. This involves the potential movement of visitor traffic westwards along the Warburton Highway towards Lilydale. If this road becomes blocked to westbound traffic, there may be a need for shelter locations adjacent to the WMBD.

The main trail head at Wesburn Park incorporates carparking and large areas of open space where shelter may be afforded for people in cars. Oval 2 (below) meets the requirement for a BAL 12.5 rating and, with space for cars and visitors.

Please note the position of Oval 2 in relation to the staging area allocated for staging of emergency services.



Wesburn Park, 680 Old Warburton Road, Wesburn

7.0 Emergency Instructions (WMBD ECO Staff and Contractors)

Emergency instructions are provided to assist WMBD ECO staff and construction teams with guidance for emergency incidents. The following four scenarios have been identified as the most likely to present as threats requiring response.

- Person is under threat from imminent emergency.
- Person is impacted by bushfire,
- Medical extraction by WMBD staff (minor first-aid or welfare issue only),
- Extraction of all persons from trails.

These Emergency Instructions are preplanned procedures designed to be enacted when required and should be practiced and exercised annually. Note: Other emergencies not listed may arise, requiring adaptation of these instructions.

7.1 Person is under threat from imminent emergency

Decision to Act:

- Riders, Council, ECO staff or construction team members become aware of hazardous situation.
- Assess own situation, are you able to move to safer location.
- Make decision on need to move to a safer location.

Warnings and Alerts:

- Be aware of any emergency warnings.
- Ensure communication equipment is fully operational and you have coverage.
- Respond accordingly to all advice.

Emergency Procedure:

- Select shortest and safest route to trail head or safe area.
- Follow signage to trail head.
- Report hazard to ECO Warden.

Contingency Options:

- Shelter in place.
- Initiate alternative survival strategies.
- Call Triple Zero and advise of your situation.
- Stay calm and alert.

Specific Considerations:

- Type of emergency.
- Access and egress options.
- Ability to move safely.

Management Actions:

- Maintain risk assessment process to support the decision to extract and ensure staff training in decision-making.
- Maintain emergency extraction instructions and review annually in consultation with emergency services and relevant stakeholders.
- Consider opportunities for continuous improvement. Review lessons learned from actual events or exercises, document it and communicate it.
- Develop learning products from incident reviews.

7.2 Person is impacted by bushfire

Decision to Act:

- Monitor for warning and advice messages for appropriate actions.
- Riders, Council, ECO staff or construction team members become aware of bushfire in immediate vicinity.
- Assess own situation, are you able to move to safer location.
- Make decision on need to move to a safer location.

Warnings and Alerts:

- Respond accordingly and heed all warnings and advice.

Emergency Procedure:

- Adhere to emergency event warnings and advice.
- Select safest and preferably shortest route to trail head or safe area.
- Be wary of riding downhill if fire is below you.
- Follow signage to nearest trail head.
- Call Triple Zero to report fire.

Contingency Options:

- If the fire is below you, implement survival strategies for Person caught in the open on foot.
- Shelter in safer place.
- Call Triple Zero and advise of your situation.
- Stay calm and alert.

Specific Considerations:

- How close is the fire.
- Access and egress options.
- Ability to move safely.

Management Actions:

- Maintain risk assessment process to support the decision to extract, and ensure staff training in decision-making.
- Maintain emergency instructions and review annually in consultation with emergency services and relevant stakeholders.
- Consider opportunities for continuous improvement. Review lessons learned from actual events or exercises, document it and communicate it.
- Develop learning products from incident reviews.

7.3 Medical assistance by WMBD ECO staff (minor first-aid or welfare issue only)

Decision to Act:

- ECO staff are required to assist rider with minor first-aid or welfare issue.
- Assess situation, are you able to move rider to safer location.
- Make decision on need to move rider or seek other assistance.

Warnings and Alerts:

- Ensure communication equipment is fully operational and you have coverage.
- If seeking assistance, place call to on-duty Warden or construction team supervisor.
- Give full details of location, including trail name and number, and ESTA emergency marker number or trail distance marker if known.
- Give full details of situation and what assistance you require.

Emergency Procedure:

- Administer first-aid or assistance as required.
- If required, move rider to safer location.
- If incident site is safe, remain in situ and reassure affected rider until help arrives.

Contingency Options:

- If unable to contact ECO staff or construction team supervisor.
- Send another team member or rider to better location for communication coverage.
- Stay calm and alert.

Specific Considerations:

- Type of emergency.
- Access and egress options.

Management Actions:

- Maintain risk assessment process to support the decision to evacuate or not to evacuate, and ensure staff training in decision-making.
- Maintain emergency evacuation instructions and review annually in consultation with emergency services and relevant stakeholders.
- Consider opportunities for continuous improvement. Review lessons learned from actual events or exercises, document it and communicate it.
- Develop learning products from incident reviews.

7.4 Extraction of all persons from trails

Decision to Act:

- Emergency services, Council or ECO staff makes decision on an extraction of all riders in consultation with emergency services.

Warnings and Alerts:

- Council or ECO staff send emergency alerts to staff, contractors and commercial operators via text and other pre-arranged messaging systems.
- Council, ECO staff or contractor's supervisor briefs own personnel on extraction and actions required.
- Where safe to do so, patrol trail network to inform riders of need to extract.

Emergency Procedure:

- Carry out Closure Procedure.
- Communicate extraction plan.
- Identify exit points and destinations.
- Task personnel, give clear instructions and check for understanding.
- Extract riders and ascertain trails have been vacated and car parks are clear.
- Advise VICPOL of potential for persons refusing to exit, missing persons or cars left unattended in trail head car parks.
- Assist with orderly movement of departing vehicles. Ensure access for emergency vehicles.
- Direct vehicle movement in an appropriate direction as advised by emergency services. This is to alleviate traffic congestion in the Warburton township.
- Cooperate with all directions of Control Agency.
- Maintain communications.
- Ensure safety.

Contingency Options:

- Shelter in place.
- Initiate survival strategies.

Specific Considerations:

- Staff availability.
- Traffic congestion.
- Potential for missing riders.
- Riders without own transport.
- Shelter and return options.
- Relief and recovery.

Management Actions:

- Maintain risk assessment process to support the decision to extract, and ensure staff training in decision-making.
- Maintain emergency extraction instructions and review annually in consultation with emergency services and relevant stakeholders.
- Consider opportunities for continuous improvement. Review lessons learned from actual events or exercises, document it and communicate it.
- Develop learning products from incident reviews.

8.0 Appendices

8.1 A. Emergency Contact Information

8.2 B. Code of Conduct

8.3 C. Stage 1 Trail Map

8.4 D. Electronic Message Board Locations

8.5 E. Emergency Access Plan (Guide)

8.6 F. Emergency Access Plan (Maps)

Appendix A - Emergency Contact Information

Emergency Notifications

Emergency services (Police, Fire, Ambulance)	000
Warburton Mountain Bike Destination <i>(Ask for Warburton Mountain Bike Destination On Call Warden)</i>	1300 368 333

Emergency Control and Support Agencies

Victorian Police, Fire and Ambulance	000
CFA District 13 HQ (Mon-Fri 9am - 5pm) <i>(not for emergency incidents)</i>	03 8739 1300
DEECA FFM Regional Duty Officer	1300 782 980
DEECA FFM	5965 9901 0417 058 334
VICSES	132 500

Local Contact List

Agency	Contact	Phone
Victoria Police	Warburton	Ph: 000, 5966 2006
	Yarra Junction	Ph: 000, 5967 1104
CFA District (Business Hours)	District 13 Regional Commander	03 8739 1300 acfo-rc.emr@cfa.vic.gov.au
	District 13 Assistant Chief Fire Officer	acfo.d13@cfa.vic.gov.au
	Manager Community Safety	mcs.d13@cfa.vic.gov.au

	District 13 Yarra Valley Group Commander – based at Woori Yallock	03 5960 7105
VICSES	Local Unit Region HQ (Mulgrave) (office hours only) Regional Duty Officer (ask to Page the Eastern Metro Region Duty Officer)	Ph: 132 500 Ph: 9256 9700 Ph: 1800 609 511
Ambulance Victoria	Emergency Planning Coordinator – Eastern Metro Senior Team Manager Team Manager – Yarra Junction Branch	0429 525 033 (Weekdays) 0438 366 810 0439 242 456
EPA	24 hour	Ph: 9695 2777
DEECA Regional Office	Port Phillip Regional Duty Officer	Ph: 1300 782 980
DEECA District Office	Nigel Brennan	Ph: 5965 9902
DEECA Yarra District Duty Officer	Summer roster 24/7	Ph: 0417 325 970
Woori Yallock Incident Control Centre	Incident Controller	Ph: 5960 7100 (CFA ICC)
Local hospitals	Maroondah Hospital Healesville Hospital (No emergency department) Yarra Junction Medical Centre William Angliss Hospital	Ph: 1300 342 255 Ph: 5962 4300 Ph: 5967 1606 1300 342 255
Relevant Water Catchment	Melbourne Water Catchment Coordinator Catchment Planner	Ph: 5962 7929, 0428 525 070 Ph: 5966 9796, 0407 857 040

Other emergency support contacts

Bureau of Meteorology		9669 4923
Wildlife Rescue Victoria		1300 094 535
Upper Yarra Wildlife Rescue Group		0427 088 121
Vic Roads		13 11 70

Appendix B – Code of Conduct

CODE OF CONDUCT

- Welcome to Warburton Mountain Bike Destination.
- Users of Warburton Mountain Bike Destination agree to comply with this Code of Conduct.
- **WARNING** Warburton Mountain Bike Destination includes jumps, drops and technical features. All users of Warburton Mountain Bike Destination do so entirely at their own risk.
- Mountain biking by its nature is a dangerous sport. The trails and various technical features have been designed to cater for a wide variety of rider abilities. Ride within your ability and on trails and features that are suitable to your skill level.
- Always wear a helmet and appropriate safety gear, and never ride under the influence of drugs or alcohol.
- Children must be supervised at all times.

PLAN AHEAD

- Be prepared and self-sufficient. Carry what you need for the ride you're undertaking, including food, water, appropriate clothing, basic maintenance tools and first aid. Regularly inspect your bike for signs of wear or damage.
- Mobile phones are critical to emergency response for communication and locating riders. Carry a fully charged mobile phone with you and consider taking a power bank.
- Consider riding with a partner or group. Whether riding in a group or solo, tell someone before you go.
- Trail information and free maps can be downloaded from the Warburton Mountain Bike Destination website: [website address tbc.](#)

TRAIL CLOSURES

- Warburton Mountain Bike Destination will close on days of Total Fire Ban and severe weather events. Please check the Warburton Mountain Bike Destination website live trail status prior to entry and obey all trail closures signage.
- Obey 'No Entry' signs. Trails will be closed on days of Total Fire Ban, severe weather events and due to maintenance and events.

SHARE THE TRAIL

- Ride in control. Look out for other riders and if you wish to pass, wait until it is safe to do so and communicate with a friendly greeting or bell ring. Most single track is one-way. On two-way trails, give way to uphill riders.
- Know your limits. Ride within your ability and according to conditions. Look out for signs and grading symbols to guide your journey. Inspect all trails, jumps and technical trail features before proceeding.
- Show caution when riding trails with limited sight lines and blind corners, and make sure you can hear what's going on around you. Anticipate other trail users as you ride around corners.
- Be visible. Never stop where you obstruct a trail, feature or cannot be seen.
- Be considerate. Minimise noise near homes and remember that in multi-use areas, mountain bikers give way to horses and pedestrians. Remove trail obstructions if safe to do so and report hazards to the Warburton Mountain Bike Destination team via the WMBD website, phone or email (contact details to be added once confirmed)

RESPECT THE ENVIRONMENT

- Ride only on open, authorised trails. Do not construct new trails or features. Respect trail closures and signage. Do not take shortcuts or switchbacks.
- Ride through standing water, not around it. Ride (or walk) technical features, not around them.
- Be mindful if and where you ride on wet days and check trail status prior to riding; both bikes and feet damage soft, wet trails.
- Leave no trace. Carry out your rubbish and do not damage vegetation.
- Look out for and respect wildlife, including snakes.
- Clean your bike to prevent spreading weeds and plant diseases. Use the bike wash stations at trail heads.

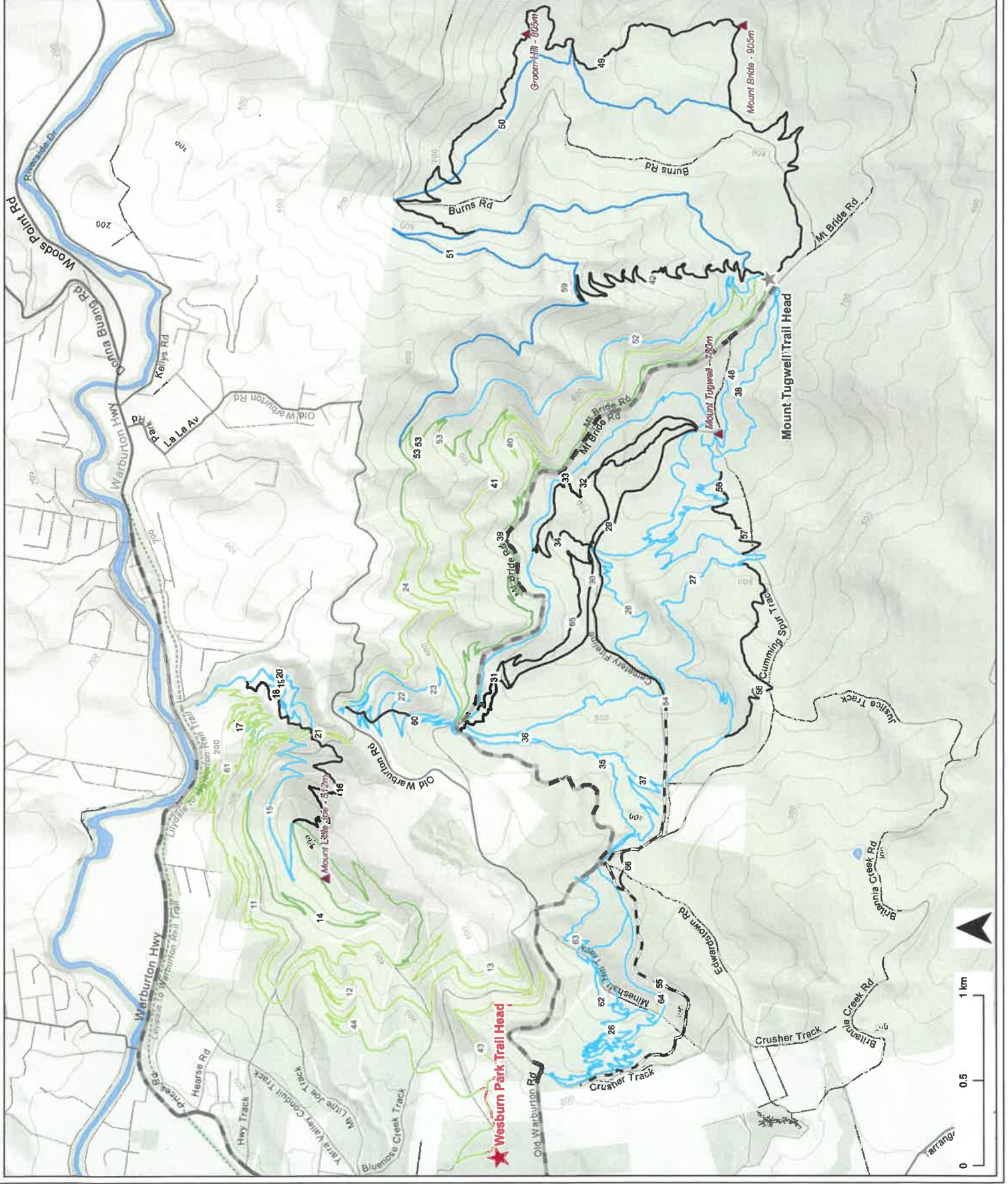
EMERGENCY PROCEDURES:

- In case of an emergency, call 000.
- For the latest emergency information, download the VicEmergency App or visit the VicEmergency website. VicEmergency is a centralised source to find emergency information and warnings, including fires, floods and storms.
- Riders are encouraged to ride together whenever possible. If you are with or an encounter an injured rider on the trail, stop and assess their condition. If medical attention is required, call emergency services (000) and remain with the injured rider. Riders should wait up trail of the injured rider and communicate with incoming riders to slow down and be aware of the situation.
- Emergency Marker signs are located throughout the trails. Quote the emergency marker code when calling 000. Trail distance markers are also provided at regular intervals and can be used as a reference to emergency services.

BUSHFIRE RISK

- Please check the WMBD website, CFA website and VIC Emergency App prior to entering the trail network to check the fire danger period, bushfire risk and trail closures.
- Do not cook or undertake open flame activities within the WMBD during the fire danger period.
- No smoking on the trails.

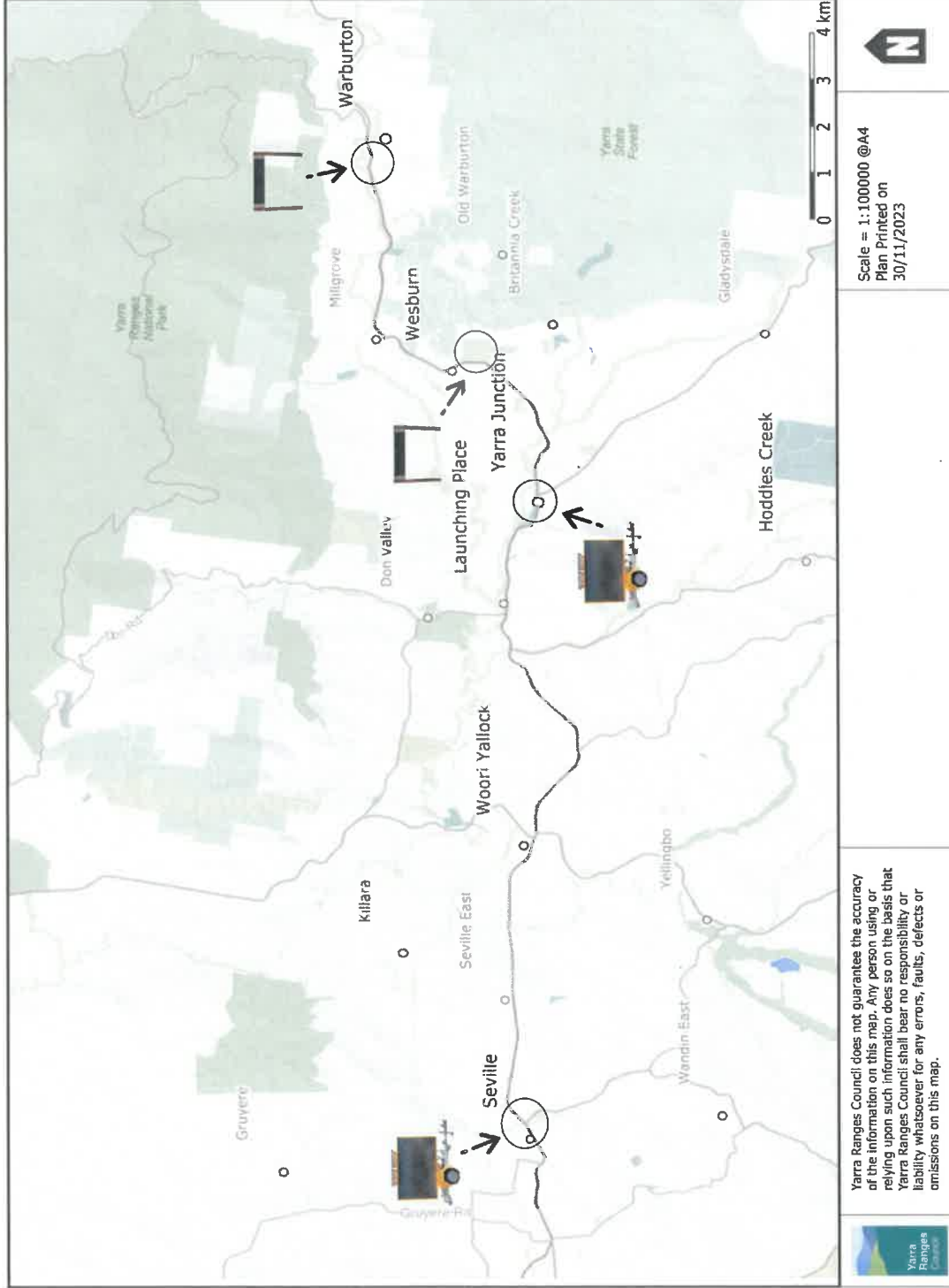
Warburton Mountain Bike Destination Southern Network Trails



Legend

- ★ Wesburn Park Trail Head
- ☆ Future Trail Head
- ▬ Future Shuttle Route
- ▬ Trails - By Difficulty
- ⋯ Very Easy
- Easy
- Easy / Intermediate
- Intermediate
- Intermediate / Difficult
- Difficult
- Extreme
- ▭ Public Land





Trail Number	Length (km)	Trail Difficulty	Emergency Access Via	Access Notes	Vehicle Access
11	5.8	Easy	1. Lower trail access walk in via Lilydale - Warburton Rail Trail or Dolly Grey Reserve depending on riders location. 2. Mid trail vehicle access via management vehicle track (4WD standard), off Old Warburton Rd or Banksia Cr. .	1. Multiple access points available which will depend on riders location for optimal egress. 2. 7% average gradient (4 degrees). 3. Management vehicle road permanently gated (1,9) key required.	Y
12	2.8	Easy	1. Walk in access via trail 11 from Lilydale - Warburton Rail Trail. 2. Vehicle access via management vehicle road (4WD standard and 4WD Advance), off Old Warburton Rd or Banksia Cr. .	1. Loop trail that starts and finishes on Trail 11. 2. 7% average gradient (4 degrees). 3. Management vehicle road permanently gated (1,9) key required.	Y
13	4.5	Easy	1. Vehicle access at multiple points via management vehicle road (4WD standard and 4WD advance) from Wesburn Park, Banksia Cr. , and Old Warburton Road.	1. Trail starts and finishes on Trail 12. 2. 6% average gradient (3.4 degrees). 3. Management vehicle roads permanently gated (1, 2, 6), key required.	Y
14	4.7	Easy/ Intermediate	1. Vehicle access at multiple points via management vehicle road (4WD standard and 4WD advance) from	1. Trail starts on Trail 13 and finishes on Trail 11. 2. 6% average gradient (3.4 degrees).	Y
15	1.9	Intermediate	1. Vehicle access to start and mid point of trail via management vehicle road (4WD standard) from Old Warburton Road.	1. Trail starts at access trail near Mt Little Joe summit. Finishes on trail 17. 2. 10% average gradient (5.7 degrees) 3. Management vehicle roads permanently gated (9), key required	Y
16	1.5	Difficult	1. Vehicle access to start and mid point of trail via management vehicle road (4WD advanced) from Old Warburton Road.	1. Trail starts at access trail near Mt Little Joe summit. Finishes on 4x4 trail near Mt Little Joe track. 2. 15% average gradient (8.5 degrees) 3. Management vehicle roads permanently gated (9), key required.	Y
17	2.6	Easy	1. Lower Trail: Walk in access and egress to lower trail via Chalet Site next to Dolly Grey Reserve. 2. Upper trail: Vehicle access at Backstairs Junction via Management Vehicle Road (4WD standard), off Old Warburton Rd.	1. Climbing trail from Warburton Chalet into the trail network. Starts at the Chalet and finishes at Backstairs Junction. 2. 5% average gradient (2.9 degrees) 3. Management vehicle road permanently gated (9), key required.	Y
18	0.8	Difficult	1. Lower Trail: Walk in access and egress via Dolly Grey Reserve via trail 20. 2. Top of trail vehicle access at Backstairs Junction via Management Vehicle Road (4WD standard), off Old Warburton Rd.	1. Trail starts from management road and finishes on trail 20. 2. 15% average gradient (8.5 degrees) 3. Management vehicle road permanently gated (9), key required.	Y
19	0.8	Intermediate	1. Lower Trail: Walking access via Dolly Grey Reserve, via trail 20 and 18. 2. Top of trail vehicle access at Backstairs Junction via Management Vehicle Road (4WD standard), off Old Warburton Rd.	1. Trail starts from trail 21 and finishes on trail 20. 2. 10% average gradient (5.71 degrees) 3. Management vehicle road permanently gated (9), key required.	Y
20	1.4	Intermediate	1. Walking access via Dolly Grey Reserve. 2. Top of trail vehicle access at Backstairs Junction via Management Vehicle Road (4WD standard), off Old Warburton Rd.	1. Trail starts from backstairs junction and finishes at Dolly Reserve. 2. 10% average gradient (5.71 degrees). 3. Management vehicle road permanently gated (9), key required.	Y
21	0.5	Easy	1. Vehicle access via management vehicle road (4WD standard), off Old Warburton Rd.	1. Trail 21 is a flat, traversing trail providing a linkage between the backstairs Junction and the management vehicle road, which connects to Old Warburton Rd. 2. 5% average gradient (2.8 degrees). 3. Management vehicle road permanently gated (9), key required	Y
22	2.8	Intermediate	1. Vehicle access to start of the trail from Old Warburton Road next to proposed bridge. 2. Upper trail access from the intersection of Edwardstown Rd and Mt Bride Road.	1. Climbing trail from Old Warburton Rd up to the Edwardstown Junction at the intersection of Edwardstown Rd and Mt Bride Rd. 2. 6% average gradient (3.4 degrees) 3. Public road access. No gates.	Y
23	1.3	Intermediate	1. Vehicle access to start of the trail from Old Warburton Road next to proposed bridge. 2. Upper trail access from the intersection of Edwardstown Rd and Mt Bride Road.	1. Descending trail from Edwardstown Junction to Old Warburton Rd. 2. 10% average gradient (5.7 degrees) 3. Public road access. No gates.	Y
24	2.6	Easy	1. Vehicle access to start of the trail from Old Warburton Road next to proposed bridge. 2. Upper trail access from the intersection of Edwardstown Rd and Mt Bride Road.	1. Descending trail from Edwardstown Junction to Old Warburton Rd. 2. 6% average gradient (3.4 degrees) 3. Public road access. No gates.	Y
26	5144	Intermediate	1. Lower Trail: Vehicle access to Old Warburton Road. 2. Upper Trail: Vehicle access via Mt Bride Road.	1. Trail 26 is an existing formalised MTB trail called Hey Hey My My. 2. 10% average gradient (5.7 degrees). 3. Public road access. No gates.	Y
27	7.5	Intermediate	1. Lower Trail: Vehicle access via management vehicle roads (4WD standard). 2. Upper Trail: Vehicle access via management vehicle roads to intersection with trail 38 (near top of Mt Summit (4WD standard). Travel along trail 38 to start of trail 27.	1. Climbing trail from lower Edwardstorn Road to Mount Tugwell. 2. 7% average gradient (4 degrees) 3. Management vehicle road seasonally gated (10, 8), key required.	Y

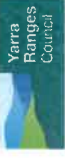
28	4.6	Intermediate	1. Vehicle access to start, mid and end of trail via management vehicle roads (4WD standard).	1. Descending trail from Cemetery Fireline to Edwardstown Rd Junction. 2. 7% average gradient (4 degrees) 3. Management vehicle road seasonally gated (10, 8), key required.	Y
29	2.1	Difficult	1. Vehicle access via Cemetery Fireline Track (4WD standard).	1. Trail runs along Cemetery Fireline Track. 2. 9% average gradient (5.1 degrees) 3. Management vehicle road seasonally gated (10), key required.	Y
30	3.0	Difficult	1. Lower Trail: Vehicle access to start of the trail from Edwardstown Road/Mt Bride Road Junction. 2. Upper Trail: Vehicle access from Cemetery Fireline.	1. Descending trail from Cemetery Fireline to Edwardstown Rd Junction. 2. 10% average gradient (5.7 degrees) 3. Upper trail: Management vehicle road seasonally gated (10), key required.	Y
31	0.6	Difficult	1. Lower Trail: Vehicle access to start of the trail from corner of Old Warburton Road and Edwardstown Road from trail 33. 2. Upper Trail: Short trail. Access from lower end.	1. Short alternate end section on Trail 30. 2. 15% average gradient (8.5 degrees) 3. Public road access. No gates.	Y
32	1.7	Difficult	1. Lower Trail: Vehicle access to start of the trail from Edwardstown Road/Mt Bride Road Junction. Walk up trail 33. 2. Upper Trail: Vehicle access to the start of trail via management vehicle roads (4WD standard) off Mt Bride Road.	1. Descending trail starting from Mt Tugwell and ending on trail 33. 2. 9% average gradient. (5.1 degrees) 3. Management vehicle road seasonally gated (10) for upper trail access, key required.	Y
33	3.3	Intermediate	1. Lower Trail: Vehicle access to start of the trail from intersection of Edwardstown Rd and Mt Bride Rd. 2. Upper Trail: Vehicle access to the start of trail via management vehicle roads (4WD standard) off Mt Bride Road.	1. Descending trail starting from Mt Tugwell and ending at Edwardstown Rd and Mt Bride Road intersection. 2. 9% average gradient. (5.1 degrees) 3. Management vehicle road seasonally gated (10) for upper trail access, key required.	Y
34	0.6	Difficult	1. Lower Trail: Vehicle access to start of the trail from intersection of Edwardstown Rd and Mt Bride Rd and walk up 33. 2. Upper Trail Vehicle access at the end of trail via management vehicle roads (4WD standard) off Mt Bride Road.	1. Link trail between Trails 30 and 32. 2. 10% average gradient. (5.7 Degrees) 3. Management vehicle road seasonally gated (10), key required.	Y
35	1.7	Intermediate	1. Lower Trail: Vehicle access at the intersection of Edwardstown Rd and Cemetery Fireline. 2. Upper Trail: Vehicle access at the intersection of Edwardstown Rd and Mt Bride Rd.	1. Trail runs from Edwardstown Junction to Mineshaft Hill area. Runs parallel to Edwardstown Rd. 2. 10% average gradient. (5.7 degrees) 3. Management vehicle road seasonally gated (10), key required at lower trail.	Y
36	0.2	Intermediate	1. Lower Trail: Vehicle access from intersection of Edwardstown Rd and Mt Bride Rd. Walk along trail 35. 2. Upper Trail: Vehicle access from intersection of Edwardstown Rd and Mt Bride Road. Walk along trail 28.	1. Link trail between Trails 28 and 35. 2. 10 % average gradient (5.7 degrees) 3. Public road access to Mt Bride/Edwardstown Rd intersection. No gates.	Y
37	0.4	Intermediate	1. Lower Trail: Vehicle access to start of trail from Cemetery Fire Line. 2. Upper Trail: Short trail. Recommend access from lower trail point.	1. Link trail between trails 27 and 35 2. 9 % average gradient (5.1 degrees) 3. Management vehicle road seasonally gated (8), key required at lower trail.	Y
38	1.6	Intermediate	1. Lower Trail: Vehicle access off Mt Bride Road. and start of trail via management vehicle road (4WD standard), off Mt Bride Road/ Mt Tugwell trail head. 2. Upper Trail: Vehicle access from management vehicle road (4WD standard), off Mt Bride Road/ Mt Tugwell trail head.	1. Link trail between summit of Mt Tugwell and Mt Tugwell trailhead. 2. 5 % average gradient (2.9 degrees) 3. Management vehicle road seasonally gated (10), key required to upper trail.	Y
39	5.2	Easy/ Intermediate	1. Lower Trail: Vehicle access from the intersection of Edwardstown Rd and Mt Bride Rd. 2. Upper Trail: Vehicle access from the intersection of Edwardstown Rd and Mt Bride Rd.	1. Trail runs adjacent to Mt Bride Road from intersection of Mt Bride and Edwardstown Road to Mt Tugwell trail head. 2. 7% average gradient (4 degrees) 3. Public road access. No gates.	Y
40	1.1	Easy	1. Lower Trail: Short trail. Recommend access from upper trail point. 2. Upper Trail: Vehicle access to Mt Tugwell trail head and travel along trail 39.	1. Link trail between trails 39 and 41. 2. 7% average gradient (4 degrees) 3. Public road access. No gates.	Y
41	5.9	Easy	1. Lower Trail: Vehicle access from Old Warburton Road near bridge crossing. Walk up trail 24. 2. Upper Trail: Vehicle access to start of trail at Mt Tugwell trail head.	1. Descending trail from Mt Tugwell Trail head. 2. 7% average gradient (4 degrees) 3. Public road access. No gates.	Y
42	5.4	Difficult	1. Lower Trail: Vehicle access to Old Warburton Road Junction. Walk along trail 24, 51 to lower end of trail. 2. Upper Trail: Vehicle access to Mt Tugwell trail head.	1. Descending trail from Mt Tugwell Trail head. 2. 9% Average gradient (5.1 degrees) 3. Public road access. No gates.	Y
43	2.5	Easy	1. Lower Trail: Vehicle access from Wesburn Park trail head. 2. Upper Trail: Vehicle access to start of trail from management vehicle road (2WD) off Old Warburton Road and mid trail via management vehicle road (4WD standard) from Wesburn Park.	1. Descending trail into Wesburn Park. 2. 7% average gradient (4 degrees) 2. Management vehicle road seasonally gated (2,6), key required for upper trail vehicle access.	Y

44	2.6	Easy	1. Lower Trail: Vehicle access to Wesburn Park trail head. 2. Upper Trail: Vehicle access to upper trail from management vehicle road (4x4) from Banksia Circuit.	1. Climbing trail from Wesburn Park. 2. 7% average gradient (4 degrees) 3. Management vehicle road seasonally gated (1,2), key required.	Y
48	1.3	Intermediate	1. Lower Trail: Vehicle access from Mt Bride Road. 2. Upper Trail: Vehicle access via management vehicle road (4WD standard), off Mt Bride Road.	1. Descending trail from Mt Tugwell to Mt Bride Rd. 2. 7% average gradient (4 degrees) 3. Management vehicle road seasonally gated (10), key required for upper trail access.	Y
49	7043	Difficult	1. Lower Trail: Vehicle access via management vehicle road (4WD standard) off Mt Bride Road. 2. Upper Trail: Vehicle access via Vehicle access via management vehicle road (4WD standard) off Mt Bride Road.	1. Descending trail from Mt Tugwell Trail Head. 2. Management vehicle road seasonally gated (11), key required for upper and lower trail.	Y
50	2821	Intermediate/Difficult	1. Lower Trail: Vehicle access via management vehicle road (4WD standard) off Mt Bride Road. 2. Upper Trail: Vehicle access via management vehicle road (4WD standard) off Mt Bride Road.	1. Descending trail from trail 49 that merges back to trail 49. 2. Management vehicle road seasonally gated (11), key required for upper and lower trail.	Y
51	4.1	Intermediate/Difficult	1. Lower Trail: Vehicle access from management vehicle track to trail 49 crossing. Walk along trail 49 to trail 51. 2. Upper Trail: Vehicle access to Mt Tugwell Trailhead where trail starts.	1. Descending trail from Mt Tugwell trail head to trail 53. 2. Management vehicle road seasonally gated (11), key required for lower trail access.	Y
52	3.8	Intermediate	1. Lower Trail: Vehicle access to Old Warburton Road Junction. Walk along trail 24, 53 to lower end of trail. 2. Upper Trail: Vehicle access to Mt Tugwell Trailhead where trail starts.	1. Descending trail from Mt Tugwell trail head to trail 53. 2. Public road access. No gates.	Y
53	1.3	Easy/ Intermediate	1. Lower Trail: Vehicle access to Old Warburton Road Junction. Walk along trail 24 to lower end of trail. 2. Upper Trail: Vehicle access to Mt Tugwell trail head and travel along trail 39.	1. Descending trail linking between trails 40 and 41. 2. Public road access. No gates.	Y
54	1170	Extreme	1. Lower Trail: Vehicle access management vehicle road (4WD standard) off Mt Bride Road. 2. Upper Trail: Vehicle access management vehicle road (4WD standard) off Mt Bride Road.	1. Extreme trail for advanced riders that continues from trail 29. 2. Management vehicle road seasonally gated (8,10), key required for upper and lower trail.	Y
55	2045	Extreme	1. Lower Trail: Vehicle access via management vehicle road (2WD). 2. Upper Trail: Vehicle access from junction at Edwardstown Rd and Mt Bride Road.	1. Extreme trail starts at the shuttle drop-off and junction at Edwardstown Rd and Cemetery Track and descends down to Crusher Track next to the end of Hey Hey My My in Wesburn. 2. Management vehicle road seasonally gated (3), key required for lower trail.	Y
56	1598	Difficult	1. Lower Trail: Vehicle access via management vehicle roads (4WD standard) from trail 27 off Mt Bride Road. 2. Upper Trail: Vehicle access via management vehicle roads (4WD standard) from trail 27 off Mt Bride Road.	1. Difficult trail for advanced riders. 2. Management vehicle road seasonally gated (10, 8), key required.	Y
57	713	Difficult	1. Lower Trail: Vehicle access via management vehicle roads (4WD standard) from trail 27 off Mt Bride Road. 2. Upper Trail: Vehicle access via management vehicle roads (4WD standard) from trail 27 off Mt Bride Road.	1. Difficult trail for advanced riders. 2. Management vehicle road seasonally gated (10, 8), key required.	Y
58	211	Difficult	1. Lower Trail: Vehicle access via management vehicle roads (4WD standard) from trail 27 off Mt Bride Road. 2. Upper Trail: Vehicle access via management vehicle roads (4WD standard) from trail 27 off Mt Bride Road.	1. Difficult trail for advanced riders. 2. Management vehicle road seasonally gated (10, 8), key required.	Y
59	0.1	n/a	1. Access via La La Falls carpark and La La Falls walking track.	1. Walking trail only. 2. Public road access to La La Falls carpark. No gates.	Y
60	529	Difficult	1. Lower trail: Vehicle access to start of the trail from Old Warburton Road next to proposed bridge. 2. Upper trail access from the intersection of Edwardstown Rd and Mt Bride Road.	1. Difficult, steep climbing trail as an optional A-line on trail 22. 2. Public road access. No gates.	Y
61	1567	Easy	1. Lower trail access walk in via Lilydale - Warburton Rail Trail or Dolly Grey Reserve depending on riders location. 2. Mid trail vehicle access via management vehicle track (4WD standard), off Old Warburton Rd or Banksia Cr. t.	1. Multiple access points available which will depend on riders location for optimal egress. 2. 7% average gradient (4 degrees). 3. Management vehicle road permanently gated (1,9) key required.	Y
62	0.7	Intermediate	1. Lower Trail: Vehicle access via management vehicle road (4WD standard) off Old Warburton Road. 2. Upper Trail: Vehicle access via management vehicle road (4WD standard) off Old Warburton Road.	1. Additional loop from top of "Hey Hey My My Track to Mineshaft Hill. 2. Management vehicle road. No gates.	Y
63	2.2	Intermediate	1. Lower Trail: Vehicle access via management vehicle road (4WD standard) off Old Warburton Road. 2. Upper Trail: Vehicle access via Edwardstown Road and Cemetery Fireline intersection.	1. Loop trail that connects Mineshaft Hill with Edwardstown Road. 2. Management vehicle road seasonally gated (6), key required for lower trail.	Y

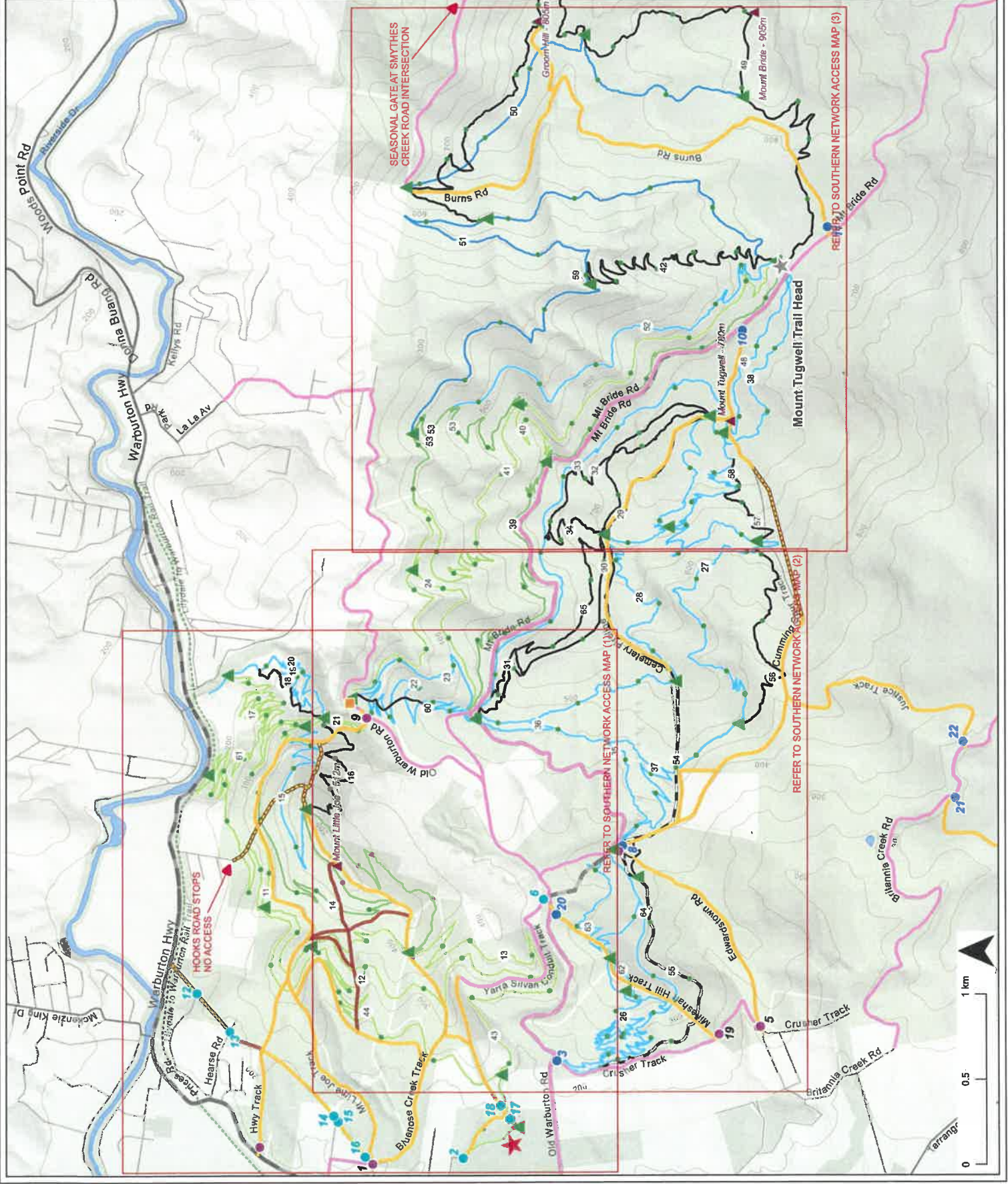
64	785	Intermediate	<p>1. Lower Trail: Vehicle access via management vehicle road (2WD).</p> <p>2. Upper Trail: Vehicle access from junction at Edwardstown Rd and Mt Bride Road.</p>	<p>1. Descending trail from Edwardstown Rd/Cemetery Track shuttle drop-off point, connecting directly to the top of the descending portion of HHMM.</p> <p>2. Management vehicle road seasonally gated (3), key required for lower trail.</p>	Y
65	1.4	Difficult	<p>1. Lower Trail: Vehicle access to Mt Bride Road and Edwardstown Road Intersection. Walk up trail 31.</p> <p>2. Upper Trail: Vehicle access via management vehicle access road off Mt Bride Road.</p>	<p>1. Descending trail between trails 30 and 33.</p> <p>2. Management vehicle road seasonally gated (10), key required for upper trail.</p>	Y
66	306	Difficult	<p>1. Lower trail: Vehicle access via management vehicle road (4WD standard) off Old Warburton Road.</p> <p>2. Upper trail: Vehicle access via management vehicle road (4WD standard) off Mt Bride Road.</p>	<p>1. Difficult trail that provides a link between trail 54 and 55.</p> <p>2. Management vehicle road seasonally gated (7), key required for upper and lower trail.</p>	Y

1. Trail distances are indicative and shall be reviewed based upon the as constructed arrangement.
2. Access table information to be reviewed and updated prior to the opening of each Stage.

Warburton Mountain Bike Destination Southern Network Access Map



Map scale: 1:20000 @ A3
 Map last updated: 22 Feb 2024
 Datum: GDA94 MGA Zone 55
 Job reference: REC0049229



Legend

- ★ Wesburn Park Trail Head
- ★ Future Trail Head
- Gate - Permanent
- Gate - Seasonal
- Gate - Permanent - Melbourne Water
- Bridge - Proposed
- ▲ Emergency Marker
- ▲ 500 Metre Interval Marker
- 2WD
- 4WD - Standard
- 4WD - Advanced
- Unnavigable
- Future Shuttle Route
- Very Easy
- Easy
- Easy / Intermediate
- Intermediate
- Intermediate / Difficult
- Difficult
- Extreme
- Public Land

SEASONAL GATE AT SMYTHES CREEK ROAD INTERSECTION

Mount Tugwell Trail Head

REFER TO SOUTHERN NETWORK ACCESS MAP (1)

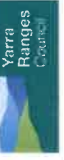
REFER TO SOUTHERN NETWORK ACCESS MAP (2)

REFER TO SOUTHERN NETWORK ACCESS MAP (3)

HOOKS ROAD STOPS NO ACCESS

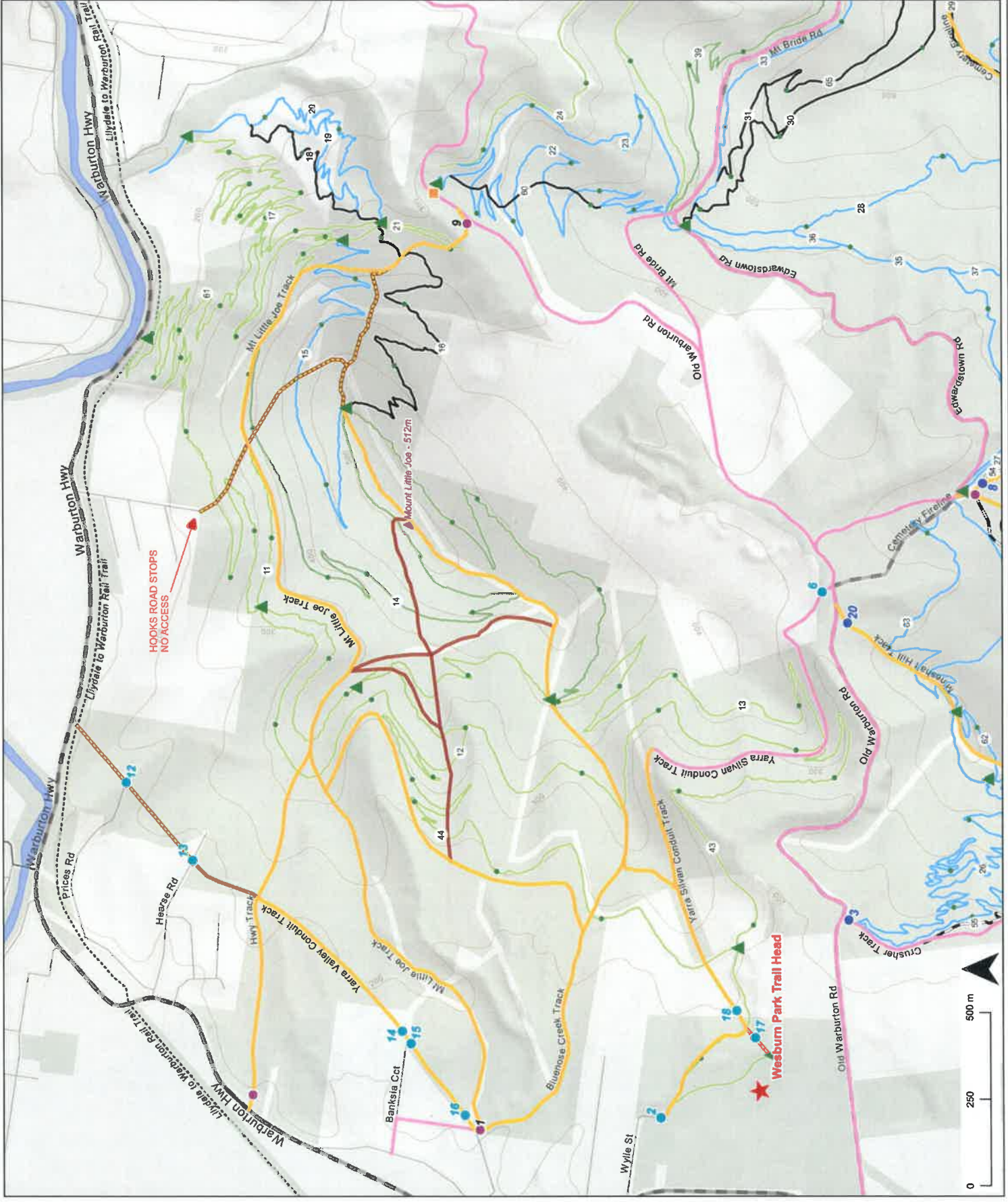


Warburton Mountain Bike Destination Southern Network Access Map (1)



Map scale: 1:10000 @ A3
 Map last updated: 22 Feb 2024
 Datum: GDA94 MGA Zone 56
 Job reference: RCB0400329

- Legend**
- ★ Wesburn Park Trail Head
 - ☆ Future Trail Head
 - Gate - Permanent
 - Gate - Seasonal
 - Gate - Permanent - Melbourne Water
 - Bridge - Proposed
 - ▲ Emergency Marker
 - 500 Metro Interval Marker
 - 2WD
 - 4WD - Standard
 - 4WD - Advanced
 - Unnavigable
 - Future Shuttle Route
 - Very Easy
 - Easy
 - Easy / Intermediate
 - Intermediate
 - Intermediate / Difficult
 - Difficult
 - Extreme
 - Public Land



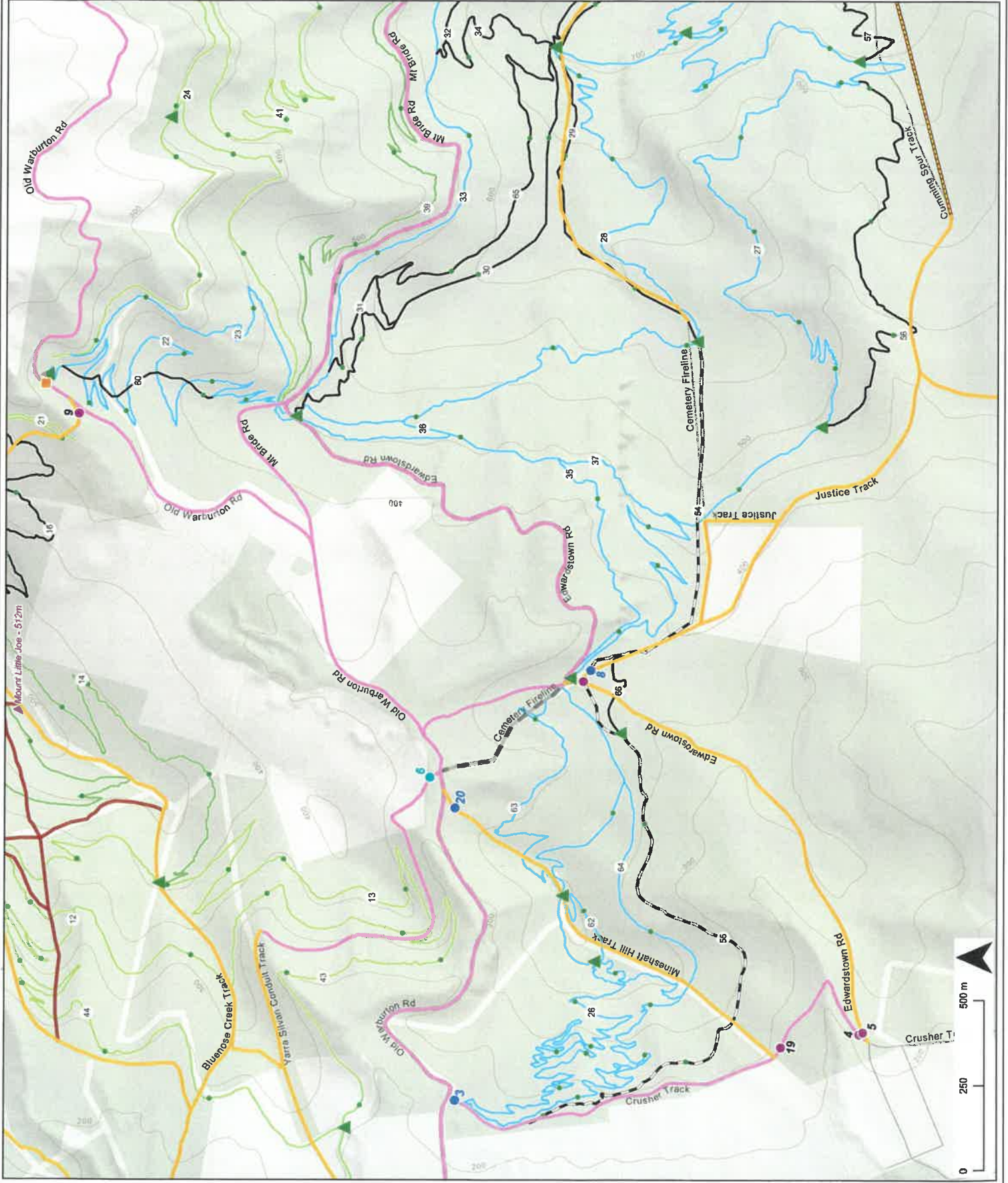
**Warburton Mountain Bike
Destination
Southern Network
Access Map (2)**



Map scale: 1:10000 @ A3
Map last updated: 22 Feb 2024
Datum: GDA94 MGA Zone 55
Job reference: REC0040329

Legend

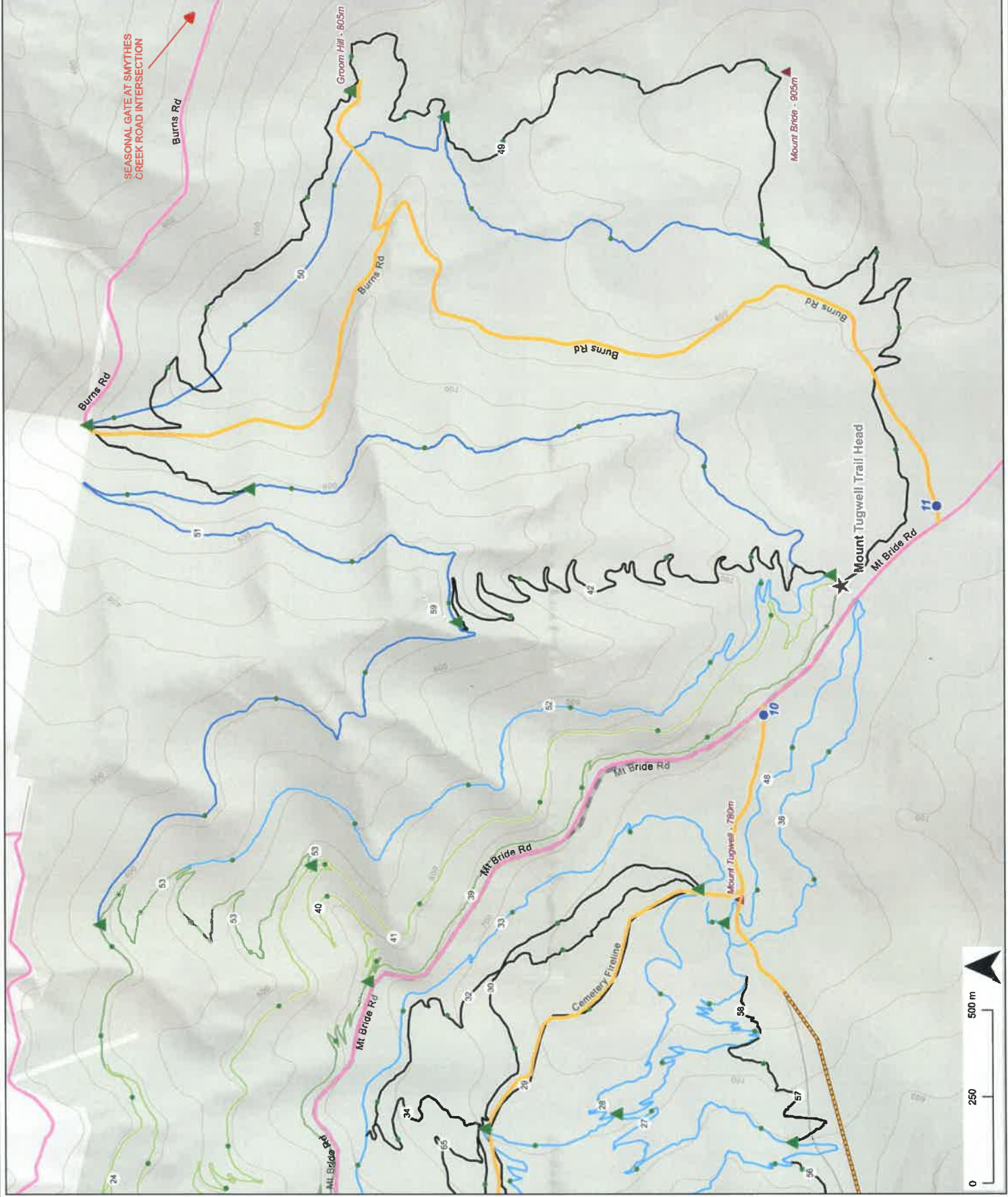
- Wesburn Park Trail Head
- Future Trail Head
- Gate - Permanent
- Gate - Seasonal
- Gate - Permanent - Melbourne Water
- Bridge - Proposed
- Emergency Marker
- 500 Metre Interval Marker
- 2WD
- 4WD - Standard
- 4WD - Advanced
- Unnavigable
- Future Shuttle Route
- Very Easy
- Easy
- Easy / Intermediate
- Intermediate
- Intermediate / Difficult
- Difficult
- Extreme
- Public Land



**Warburton Mountain Bike
Destination
Southern Network
Access Map (3)**



Map scale: 1:10000 @ A3
Map last updated: 16 Feb 2024
Datum: GDA94 MGA Zone 56
Job reference: REC000080



Legend

- ★ Wesburn Park Trail Head
- ☆ Future Trail Head
- Gate - Permanent
- Gate - Seasonal
- Gate - Permanent - Melbourne Water
- Bridge - Proposed
- ▲ Emergency Marker
- 500 Metre Interval Marker
- 2WD
- 4WD - Standard
- 4WD - Advanced
- ▨ Unnavigable
- ▬ Future Shuttle Route
- Very Easy
- Easy
- Easy / Intermediate
- Intermediate
- Intermediate / Difficult
- Difficult
- Extreme
- Public Land