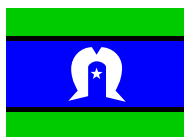


PRE-BUDGET SUBMISSION 2023-24

Victorian Government





Acknowledgement of Country

We respectfully acknowledge the Traditional Owners, the Wurundjeri People as the Custodians of this land. We also pay respects to all Aboriginal Community Elders, past and present, who have resided in the area and have been an integral part of the history of this region.

Contents

About Yarra Ranges	4
Sustainable Environment	5
Greening the Suburbs	6
Firestick Cultural Burning Program	8
Biolinks and Regional Pest Animal Program	9
Energy Transition	10
Connected and Healthy Communities	11
Storm recovery	12
Telecommunications	14
Mental Health Outreach	15
Maternal Child Health Services	15
Neighbourhood Houses	15
Social and Affordable Housing	16
School Crossing Supervisors	16
Community Safety: CCTV	16
Economic Development and Investment	17
Ridges and Rivers	18
Peri-Regional Status	20
Lilydale Investment Precinct Project	22
Wandin North Activity Centre	23
Biosecurity: Phylloxera	23
Orphaned Building Permits	23
Seasonal Workers Accommodation	24
Integrated Transport	25
Lilydale Bypass and Railway Works	26
Paths and Trails Program	30
Bus Services	32
Belgrave Rail line infrastructure works	33
Canterbury Road Upgrade	33
Brushy Creek Trail	33
Morrison Reserve Lighting Project	33
Sport and Recreation	34

About Yarra Ranges

Yarra Ranges is a significant place in Victoria. Located on Melbourne's eastern edge, it is a hinterland that endures as 'Melbourne's Playground' with its vibrant local economy and premier tourist destinations.

Our region covers approximately 2,500km², stretching from densely populated urban areas into the foothills, agricultural valleys and forested areas of the Great Dividing Ranges.

It is globally recognised for its natural environment and diverse habitats, with an array of national parks, state forests and private gardens, while being under an hour's drive from Melbourne's CBD.

More than **160,000** people call Yarra Ranges home and more than **13,000** businesses operate locally, employing **41,000** people.

By 2032, Yarra Ranges aims to grow our economy to **\$9.1 billion**, supporting more than **57,000 local jobs**.

With this immense potential, we must ensure our communities have equitable access to services and infrastructure, our local business have the right supports to prosper, our townships evolve sustainably, and our natural environment is protected and enhanced.

That's why our submission to the Victorian Government's 2023-24 budget focuses on strategic initiatives that strengthen our region's liveability, sustainability and capacity to contribute to the broader state economy.

Working together with the Victorian Government, and the partners identified in this submission, we can make Yarra Ranges an even better place to live, work and visit.



Image: Victorian electoral divisions within the Yarra Ranges municipal boundary.



SUSTAINABLE ENVIRONMENT



Greening the Suburbs

The Ask

\$9.5 million to plant over 130,000 trees, with a mix of street tree planting and bushland reserve planting across various townships in the urban, valley and hills areas.

Project funding will resource planning, community engagement, plant selection and procurement, project management and delivery, and maintenance.

Trees are fundamental to the story of Yarra Ranges, shaping our cultures, values and communities. They are a prominent feature in our landscape, providing benefits to our health and wellbeing, community and culture, the environment, ecology and economy. But as the climate changes and our urban areas evolve, severe weather events will become more frequent and tree canopy will continue to decline.

During the savage storms that swept through the region in June 2021, our region is estimated to have **lost around 25,000 trees**, forever changing the landscape.

We need more trees, with the right tree in the right location, through a targeted tree-planting initiative that will 'Green the Suburbs'. It will:

- improve amenity and liveability for families across the region
- provide sun protection for pedestrians
- future-proof our environment against climate change
- enhance the 'green' character that makes Yarra Ranges villages a destination for people to recharge and engage with nature.

The initiative has potential to incorporate school-based programs and other participation opportunities for volunteers and community groups. Council expects to deliver the program over four years, with first trees planted within 12 months.

- Between 2014 and 2018, our built-up areas lost 186 hectares of tree canopy cover, equivalent in size to 104 MCGs.
- Street tree planting provides direct benefits to residents e.g. 50 households engaged per street.
- Bushland planting provides opportunities for revegetation on a larger scale, with approximately 500-1,000 trees per site.

Strategic Links

- Tree Canopy Strategy
- Municipal Recovery Plan
- Nature Plan





Firestick Cultural Burning Program

The Ask

Funding to build Firestick practice capability to enhance local fuel management programs, through two project components:

1. \$200,000 to build **Cultural burning capability** and understanding of the efficacy of Firestick practices for fuel management and asset protection on private, Council or public land. Deliver Cultural burning activities around Monbulk, Healesville & Yarra Junction. Facilitated by a funded Project Officer - Cultural Burning.
2. \$100,000 to deliver a **research project** to understand and develop Culturally appropriate tools and measures for future Cultural burning activities, that can be shared with fire management and land managers at local, regional and state level.

In 2020, Council established a three-year partnership with the Firesticks Alliance Indigenous Corporation (FAIC) to deliver a Firestick cultural burning program. Firestick uses the ancient practice of Firesticks or cultural burning on private and public land, to manage fuel loads, increase biodiversity and provide a positive impact on wellbeing.

The application of Indigenous land management practices supports the healing of Country, advances climate change adaptation, and provides space for Indigenous and non-Indigenous people to share Aboriginal culture and heritage, creating a platform for Reconciliation to thrive.

The Firestick program aligns with the United Nation's Nature-based Solutions approach to Disaster Risk Reduction.



Biolinks and Regional Pest Animal Program

The Ask

Funding contribution of \$450,000 to kick-start a Biolinks and Regional Pest Animal program, and an additional \$350,000 per annum for 10 years.

This comprehensive program would contribute to the resilience and control of pest animals by:

- developing a Biolinks Plan to establish important habitat corridors for biodiversity protection and enhancement.
- facilitating a strategic cross-tenure program to address pest animals such as deer, foxes, rabbits, feral cats and Indian myna birds.
- Providing community education and incentive programs





Energy Transition

Community Solar Program

Funding contribution \$8 million (\$2 million per annum for 4 years).

Continuation and expansion of Council’s program to retrofit solar, batteries and LED lighting at community facilities. Reducing operating costs for our community groups to enable program expansion and continued community outreach.

.....

Zero Emissions Vehicles Transition

Funding contribution \$2 million for charging infrastructure, for all light and heavy vehicles and plant assets.

Infrastructure would be used by Council and the public, supporting Council’s fleet transition and community uptake of electric vehicles. Key townships identified for the provision of charging stations include: Monbulk, Yarra Junction, Lilydale and Sassafras or Upwey.

.....

Climate Resilient Buildings Program

Expansion of Council’s existing program, at an estimated cost of \$300,000 per site, depending on the extent of works required.

Upgrades to community facilities that service isolated communities that would likely be cut-off in a storm, bushfire or other emergency. Scope of works will include a combination of energy and water efficiency measures, solar, battery, and generator plug-in points and potential for a microgrid / community battery. A Building Climate Vulnerability Assessment will be undertaken to further detail and prioritise works.



CONNECTED AND HEALTHY COMMUNITIES



Storm Recovery

The Ask

\$19 million for key recovery initiatives that yet to be fully funded.

That the Victorian Government commit to supporting Councils through a staged 5-year framework for recovery from major disasters to account for extended mental health impacts and support short and long term recovery, resilience and community connectedness. This is consistent with the 10 Years Beyond Bushfires report, developed by the University of Melbourne in partnership with the Victorian Government, Emergency Management Victoria, Australian Red Cross, Phoenix Australia and the Social Research Centre.

Yarra Ranges was the epicentre of a violent storm that swept across Victoria in 2021. Locally, this resulted in:

- more than 1,000 homes and business extensively impacted by storm debris
- almost 5,000 properties impacted by flood
- more than 3,000 homes without power and internet for more than a month
- 34 communities lost NBN/internet service and were unable to call 000 for assistance.

Council is now more than one year into a community-led recovery process, with support provided by both Victorian and Commonwealth Governments.

However, several outstanding challenges remain for our impacted residences, that require further funding and support from the Victorian Government, including programs for:

- People, Culture and Wellbeing
- Business, Tourism and Economy
- Public Infrastructure
- Environment and Biodiversity
- Planning and Rebuilding
- Recovery Directorate

To ensure our communities recover effectively, and our environment and infrastructure is rebuilt to withstand future weather events, we require ongoing partnership and support from the Victorian Government.

Strategic Links

- Municipal Recovery Plan
- Health and Wellbeing Plan
- Nature Plan





Telecommunications

The Ask

- 1. Improve mobile connectivity** in 5 key areas with low or no mobile service quality: Dandenong Ranges, Hoddles Creek, East Warburton, Steels Creek, Fernshaw.
- 2. Upgrade NBN broadband services** from fixed wireless, satellite and FTTN to FTTP in key areas with slow broadband service.
- 3. Strengthen telecommunications network resilience** during power outages and emergencies e.g. increased battery back-up at mobile towers, generator power for NBN nodes.

Broadband and mobile services are essential for how we work, learn and connect with each other. Reliable connectivity is also critical in an emergency.

But we know Yarra Ranges has widespread mobile blackspots, lagging broadband speeds, and poor network resilience. Service is broadly unreliable and substandard, even in urban townships.

During the June 2021 storm events, telecommunications service was cut to thousands of residents. People were left with no line out of the impact zone, and no access to emergency information for days.

Improving connectivity means better access to education and employment opportunities, improved social connections and mental health, access, and greater preparedness for and responses to emergencies.

Connectivity may be strengthened by: provision of new and upgraded infrastructure throughout the municipality; the deployment of infrastructure that supports multiple mobile carriers in Yarra Ranges' regional areas; upgrading NBN services to fibre technologies;

resilience measures including built solutions and activation of key community members to assist in protecting and restoring services in isolated locations during and after emergencies.

- An independent study on mobile blackspots in Yarra Ranges found that 25% of sites tested had unusable signal or no coverage.
- The study tested more than 24,000 sites, including key segments of the road network, community fire refuges, schools, aged care and CFA stations.
- More than 98% of residents rely on telecommunications in an emergency.

Strategic Links

- Municipal Recovery Plan
- Economic Development Strategy
- Health and Wellbeing Plan



Mental Health Outreach

In support of Anchor

Mental health outreach service to reduce homelessness and early school leaving (1 x FTE position, funded at approximately \$130,000 per year, plus car). Potential to support schools to identify young people at risk of homelessness, facilitate referral pathways to services, coordinate responses from health/mental health and family services.

.....

Maternal Child Health Services

In partnership with Interface Councils and MAV

1. Service resourcing

Immediate review of the State Government resourcing of the maternal and child health service and an ongoing commitment to the 50:50 partnership with local government in the provision of this essential universal service

2. Maternal and Child Health Nurse Educator

A collaborative approach to design a comprehensive student, clinical placement and job readiness program to support the transition of midwives into the sector. Long-term, this approach will ensure sustainable nurse staffing resources to alleviate MCH nurse shortages and workload pressures. It would also increase the number of clinical placements available each year.

.....

Neighbourhood Houses

In support of Neighbourhood Houses Victoria

The Victorian Government should make permanent the additional funding committed to the Neighbourhood Houses Coordination Program in 2018 (\$21.8 million over four years), to ensure Neighbourhood Houses across Victoria, including in Yarra Ranges, can continue to provide key services and community development work.



Social and Affordable Housing

In partnership with Eastern Affordable Housing Alliance

- Commit to regional affordable housing targets by delivering a minimum of 11,700 new social housing dwellings the Melbourne's Eastern Region by 2032, working in partnership with Councils.
- Work with the EAHA region to identify pilot inclusionary zoning in appropriate (and stakeholder supported) developments.
- Commit to working with EAHA Councils and relevant housing stakeholders to identify and develop appropriate state-owned land across the region.

School Crossing Supervisors

In partnership with the Monash School Crossing Network

The Victorian Government should work with Councils to deliver a more sustainable funding model for the school crossing supervisor service, and to reform the way road safety around schools is managed.

Financial support for councils to provide the School Crossing Supervisor service has gradually decreased over time. Changing demographics are making it increasingly difficult to attract staff, costs to Councils are increasing each year, and growing numbers of crossing sessions are unstaffed each day across Victoria.

Community Safety: CCTV

In support of Yarra Ranges Safety Camera Network

Maintenance and replacement of CCTV systems, including:

- Healesville – upgrade and repairs (estimated cost: \$200,000)
- Lilydale – system replacement (estimated cost: \$500,000)
- Establishment of state programs for community groups to access funding for community safety infrastructure, including ongoing maintenance.



ECONOMIC DEVELOPMENT & INVESTMENT



Ridges and Rivers

The Ask

Warburton Mountain Bike Destination (WMBD)

\$5 million to enable the full delivery of the WMBD Stage 1, as scoped in existing funding agreements with the Commonwealth and Victorian Governments.

Ngurrak barring (RidgeWalk) Stage 2

\$2 million to enable the delivery of:

- Trail from Mt Evelyn Recreation Reserve through Melbourne Water managed land to Parks Victoria managed land boundary
- Proposed pedestrian crossings at Childs Road, Kalorama and Belgrave-Hallam Rd, Belgrave
- Additional new and upgraded Parks Victoria car parks at trail nodes: at Sherbrooke Forest at Belgrave-Ferny Creek Rd and opposite Kalorama CFA on Range Rd, Olinda





Consisting of three signature outdoor attractions – the Yarra Valley Trail, ngurrak barring (RidgeWalk) and Warburton Mountain Bike Destination – Ridges and Rivers takes locals and visitors alike from the forested ridges of the Dandenongs and Yarra Ranges, through to the lush pastures and alpine fresh rivers of the Yarra Valley.

Early stages of the Ridges and Rivers projects have been funded by a partnership between the Commonwealth Government, Victorian Government, Yarra Ranges Council and Bendigo Bank (Warburton & Yarra Junction).

Through an increased network of improved trails and walking tracks, Ridges and Rivers will help to connect local townships and provide convenient, easy access to walking, cycling and mountain biking opportunities, delivering significant health and wellbeing benefits for Yarra Ranges communities.

Ridges and Rivers will also provide a much-needed economic boost to the region which has been particularly impacted by the pandemic and the June 9 storms.

Once complete in 2031, WMBD will:

- inject \$48 million a year into the local economy
- create 229 FTE jobs
- attract 128,000 new visitors to the Yarra Ranges annually
- generate 77,000 overnight stays annually
- see 222,000 rides per year.



Strategic Links

- Council Plan
- Recreation and Open Space Strategy



Photo (left): Laki Sideris Photography
Tawny Frogmouth by Renate Crow



Peri-Regional Status

The Ask

Recognise the unique mix of regional and urban attributes of Yarra Ranges and Mornington Peninsula, and help us to better support our rural businesses and populations, with a new status that adds to our metropolitan classification: Peri-Regional.





Yarra Ranges and Mornington Peninsula are like no other parts of Victoria, with their urban and rural mix, high-value agricultural and conservation land, and iconic tourism destinations.

This mix creates distinct economic advantages and disadvantages, and there are State-significant economic opportunities in both regions that are not currently supported by any consistent funding streams.

Acknowledging this, and opening up regional funding streams to these municipalities, will benefit the regions, their residents and the State of Victoria.

The missing piece in Victoria's spatial composition

Peri-Regional areas are the missing piece in the spatial composition of Victoria.

As a unique geographical form, Peri-Regional completes the picture, which now includes metropolitan, interface, peri-urban, regional cities and rural councils.

There is a precedent for creating a new status. In 2020, following advocacy from six regional councils (Bass Coast, Baw Baw, Macedon Ranges, Moorabool, Golden Plains and Surf Coast Shire), the Victorian Government recognised the group as **Peri-Urban**, allowing them access to the Growing Suburbs Fund, previously only available to Melbourne's ten Interface Councils.

We need a new status, Peri-Regional, that retains our metropolitan classification, recognises our unique challenges and opportunities, and unlocks the significant economic potential of our regions.

The path forward for 'Peri-Regional'

Together with Mornington Peninsula Shire Council, Yarra Ranges Council has commissioned a report into the impacts of our metropolitan classification, that sets out the case for 'peri-regional'.

We're now advocating to the Victorian Government to formally establish peri-regional as a status, and apply it to our regions to better recognise our unique needs and potential, and grant access to relevant regional funding programs.



Strategic Links

- Council Plan
- Economic Development Strategy
- Health and Wellbeing Plan



Lilydale Investment Precinct Project

\$300,000 to develop a design framework to achieve a coordinated and integrated development and open space precinct in the heart of Lilydale.

The Lilydale Investment Precinct project will continue an expansive planning exercise for the future of community services and facilities in Lilydale. This project will develop a design framework to achieve a coordinated and integrated development and open space precinct in the heart of Lilydale. Investigating built form, public realm, transport, hydrology and biodiversity, the plan will guide future community-oriented developments that will service Lilydale and surrounding urban areas as well as the Yarra Valley and Upper Yarra regional catchments.

This project has strategic links to: Lilydale Revitalisation Project, Lilydale Place Plan, Lilydale Structure Plan, Lilydale Integrated Community Facilities Options Study, Draft Aquatics Strategy and Eastern Health Needs Assessment



Artist Impression of Lilydale Street

Source: Lilydale Major Activity Centre Structure Plan 2022



Wandin North Activity Centre

\$200,000 to deliver the Wandin North Activity Centre Improvements project, including landscaping and shopping strip footpath works.

There has been strong support from Wandin North businesses and community to see Council investment in updating this aging activity centre.

The project will respond to the recommended outcomes of the Draft Wandin North Masterplan and the PJ Mould Landscape Plan.

Total project cost is \$400,000, with 50% contributions from State and Council.

Biosecurity: Phylloxera

Funding and support for agribusiness to replant affected vineyards in the region with root stock that is resistant to phylloxera.

Phylloxera is an insect pest that affects grapevines. The presence of phylloxera in the Yarra Valley poses a significant biosecurity threat to all local growers. Vineyards planted on their own roots have limited long-term viability, and must be removed and replanted by grafting onto phylloxera-resistant rootstock.

The cost associated with grafting and replanting is likely to be prohibitive for many growers. To sustain this key industry, government co-funding is required to support industry education and replanting activity.

Orphaned Building Permits

The Victorian Government should support the Victorian Building Authority (VBA) to appoint a Manager for any Private Building Surveyor (PBS) business, if the PBS's registration has been suspended or cancelled.

There are over 800 orphaned building permits in Yarra Ranges, and tens of thousands across Victoria. This issue is created by the VBA process when deregistration occurs, which fails to appoint a manager or ensure a new PBS has been appointed at the time of deregistration. Unlike Councils, the VBA has the ability to recover the cost of appointing a manager to handle the business of a deregistered PBS.

Without oversight from a relevant building surveyor, there are serious non-compliance and public safety risks, with building work that may proceed and/or buildings that may be occupied without an occupancy permit or certificate of final inspection.



Seasonal Workers Accommodation

That the Victorian Government provide support for:

- **Short-term accommodation in regional townships**
- **Planning Scheme reforms to enable more accommodation approvals**

Agribusiness makes a significant contribution to the Yarra Ranges economy and the region's reputation as a food and wine destination, bolstering other key industries such as hospitality and tourism.

The sector is powered by more than 2,000 employees, including many seasonal workers, providing more than double the share of total employment in the region compared with the broader state (4.89% vs 2.32% respectively). However, the lack of accommodation for seasonal workers is proving a barrier to attracting the workforce our growers need.





INTEGRATED TRANSPORT



Lilydale Bypass and Railway Works

The Asks

We call on the Victorian Government to:

- Work with Council to determine a position on the **Lilydale Bypass**, including the completion of regional-level traffic study by the Department of Transport, consistent with Actions A16 and A17 of the Lilydale Structure Plan.
- Commit to:
 - building the **Cave Hill Railway Station**, at Kinley Estate, including lowering of the rail track to achieve the rail standards, which would have to occur if Cave Hill Station is developed.
 - **duplicating** the rail line between Mooroolbark and Lilydale
 - upgrade of the **bridge** at the Hull Rd/Mooroolbark Rd intersections
- Commit \$300,000 (minimum) for the upgrading of the Lilydale Railway Station building to a standard that is fit for purpose for community use and meets DDA access standards.

The Lilydale Major Activity Centre has a rich history and an extensive variety of existing community facilities, open spaces, commercial and industrial activities, as well as significant opportunity for growth. The Lilydale activity centre also encompasses the former Lilydale Quarry that will be developed for a new community of approximately 8,000 people who will rely on and interact with the broader activity centre.

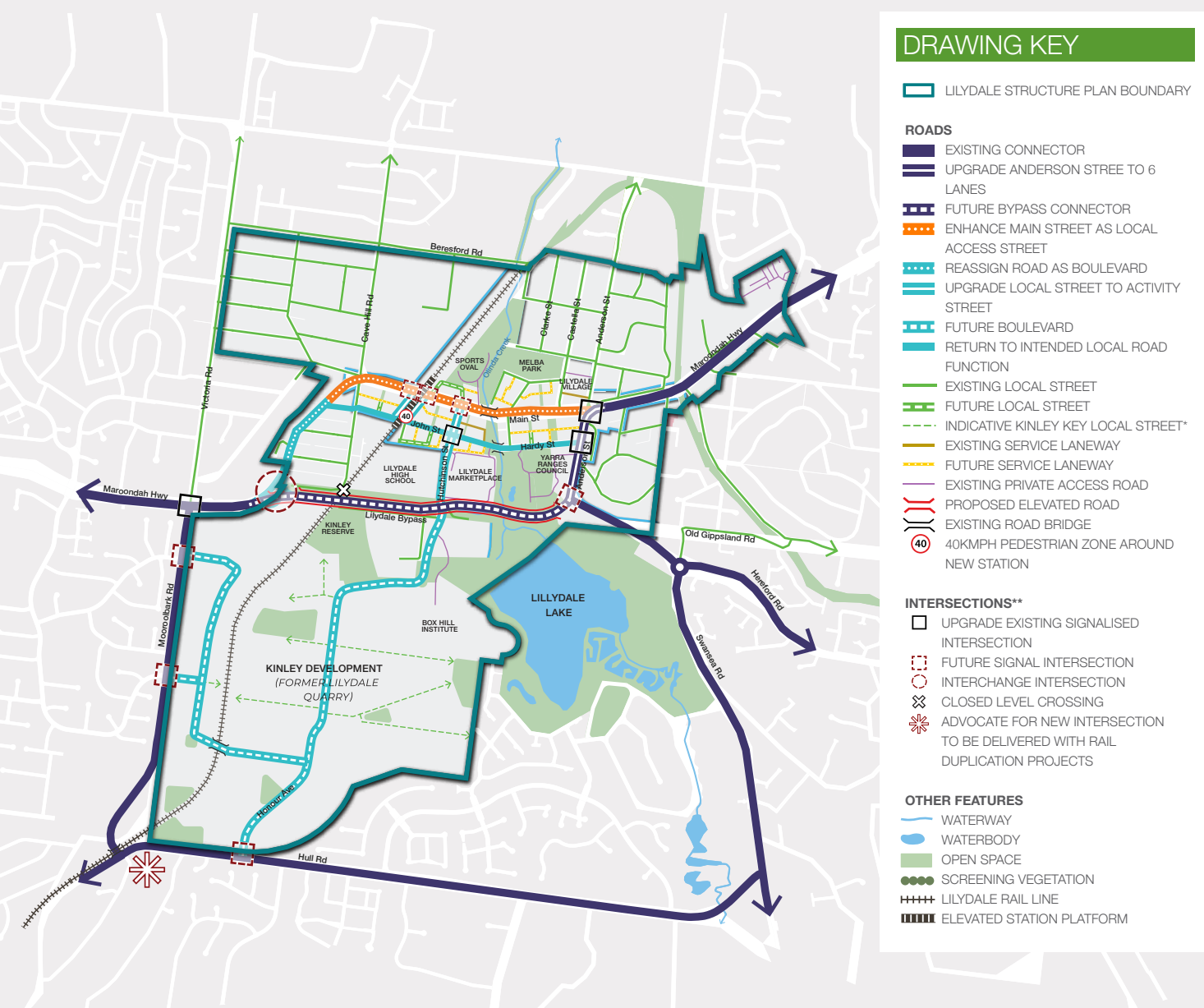
The Lilydale Structure Plan was adopted by Council in 2022, setting a 20-year vision for a series of fully functioning 20-minute neighbourhoods. Several projects now require the support of the Victorian Government to deliver.



The Lilydale Bypass

As a project of strategic importance, the proposed Bypass could allow Main Street and other parts of the township to transition away from being a busy throughfare for private cars to a quieter, high-quality 'green' environment that supports more local activity and a range of transport options.

By diverting traffic through Melba Avenue, it may reduce congestion and travel time through Main Street, accommodate population growth and improve safety and efficiency for all road users. Main Street would then be able to transform to better service the local community in a more accessible way, and enhance access and experiences for visitors travelling from Melbourne to the Yarra Valley.



Lilydale Bypass proposal

Source: Lilydale Major Activity Centre Structure Plan 2022

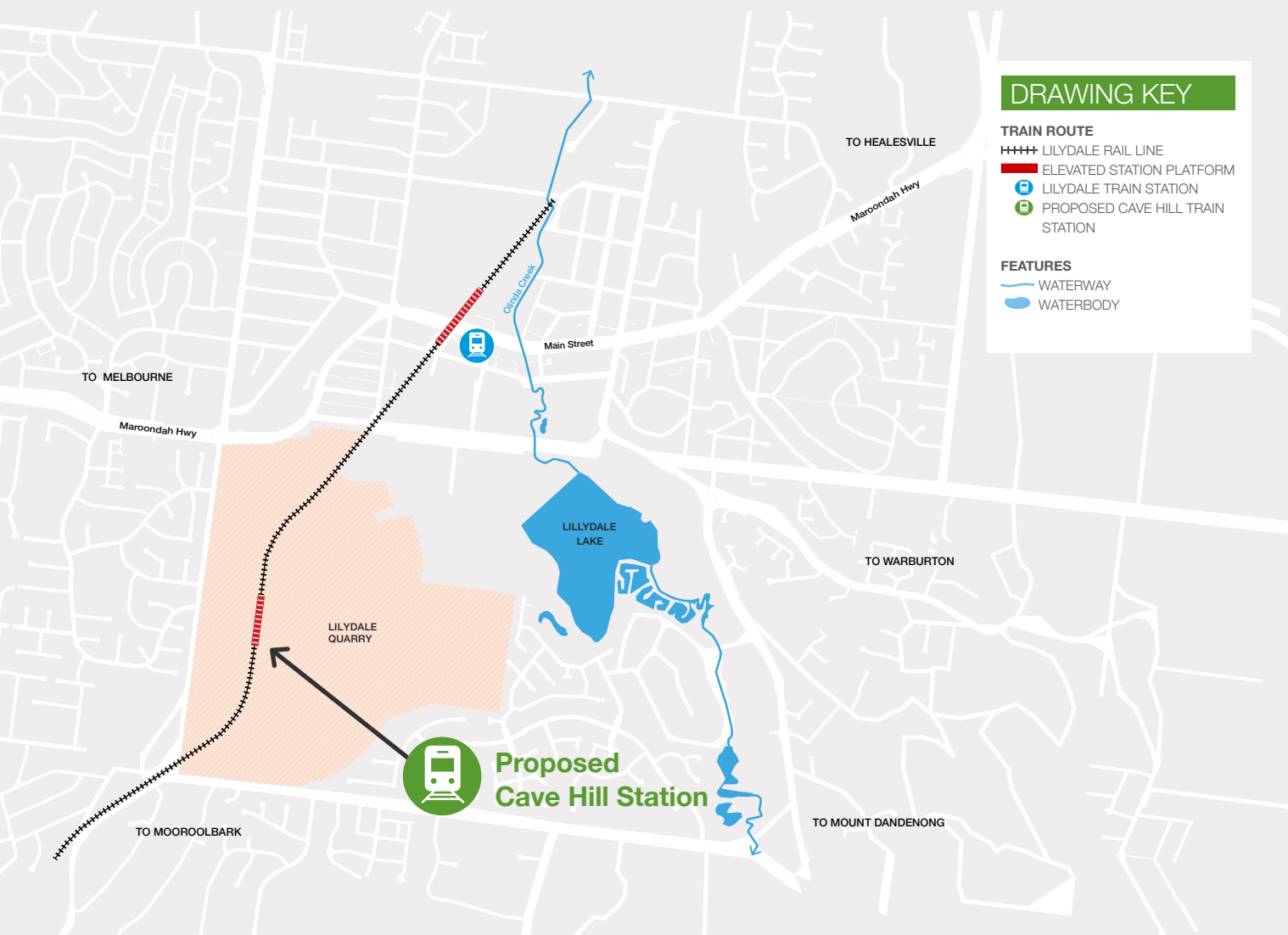


Cave Hill Station

The proposed Cave Hill station site is located between Mooroolbark station and Lilydale station adjacent to the housing development currently under construction within the former Lilydale Quarry site.

Research has shown the ongoing need for the station, with over 3,000 new dwellings under development in the 800m catchment of the proposed station as well as existing mixed-use surrounds. Council prepared a Cave Hill Station Concept Development Report in 2017, which showed that a rail line was feasible and would improve access to jobs, education, and the wider train network. The station will support the creation of a 20-minute neighbourhood, and reduce demand on parking at Lilydale and Mooroolbark stations.

Victorian rail standards indicate that new stations must be located on straight track with a gradient no steeper than 1 in 200 (0.05%). For the proposed Cave Hill station, the only area with straight track and level track is directly opposite the old quarry pit. To achieve the 1 in 200 maximum gradient it will be necessary to carry out track lowering at the site.



Cave Hill Station proposal

Source: Lilydale Major Activity Centre Structure Plan 2022



Rail duplication

Council advocates for the duplication of the track from Mooroolbark to Lilydale, in conjunction with construction of Cave Hill station.

The Mooroolbark and Lilydale train is currently operating at capacity during peak periods. The single-track railway lines between Mooroolbark and Lilydale are an impediment to providing effective services. Train journeys are often terminated early at Mooroolbark, which causes problems for passengers travelling to Lilydale, particularly those who are dependent on a connecting bus service. Duplicating the track would remove a significant bottleneck along this rail line, deliver greater service capability that builds on the level crossing removal project, better service the growing population and improve connectivity with other public transport services.

Lilydale Heritage Railway Station

Commit \$300,000 (minimum) for the upgrading of the heritage Lilydale Railway Station building, to a standard that is fit for purpose for community use and meets DDA access standards.

Upgrade of intersection bridge at Hull Road and Mooroolbark Road

During the approval process of the Kinley Estate, congestion at the intersection of Hull Road and Mooroolbark Road was found to be significantly compromised by the single lane railway bridge under the Lilydale railway line.

The Department of Transport has determined the ultimate solution to this issue is a new road under rail bridge, as a state-funded and -delivered project.



Paths and Trails Program

Trails Program

\$21 million program of trail connections, strengthening connections to major trails and activity centres:

- Olinda Creek Trail Extension & York Road Trail
- Brushy Creek Trail (missing section)
- Moroolbark to Doongalla Reserve (Glasgow Road)
- Kilsyth Pipe Track Extension
- Green Spine Trail Extension
- Black Springs Road Trail
- Ringwood Lilydale Rail Trail
- Chirnside to Wonga Park Trail
- Mt Evelyn to Monbulk Trail
- Don Road Trail
- Little Yarra Trail
- Launching Place River Circuit
- Lilydale to Warburton Trail extension - Warburton to East Warburton & Redwoods
- O'Shannassy Trail Connections (Don Road & Yuonga Road)
- Big Pats Creek - Walk into History Trail
- Steels Creek Trail extension to Old Kinglake Road
- Maroondah Aqueduct to Sugarloaf Reserve
- Montrose Pipe Track

Footpaths – missing links program

\$1.4 million per annum over 10 years to construct 45 kilometres of 'missing links' across Yarra Ranges' footpath network.

Council's strategic footpath program supports the creation of 20-minute neighbourhoods by prioritising footpaths based on population density as well as links to tourism destinations, aged care facilities, council facilities, schools, community services, open space public transport and shopping precincts.

A well-connected footpath network is key to enhancing accessibility and ensuring community members can enjoy our neighbourhoods, access services and keep active.

With 20 missing links in high tourist catchments of Belgrave, Olinda, Sassafras, Healesville and Warburton, the footpath program offers significant benefits for local businesses and supports Victoria's vision for a strong tourism economy.



Warburton Rail Trail Crossings

\$1.43 million to upgrade three key road crossings along the Warburton Rail Trail, at intersections along Warburton Highway at:

- Wandin North, **\$780,000 for a signalised pedestrian crossing**, to improve safety for pedestrians, cyclists and horse riders at this site, which sees 15,000 vehicles a day.
- **Millgrove, \$150,000 to implement a median refuge** with kerb extension at Warburton Highway & McKenzie King Drive, to improve pedestrian safety and reduce traffic speeds.
- **Yarra Junction, \$500,000 for a signalised pedestrian crossing**. Currently has impacted sightlines, and with around 1,200 daily users of this crossing and the nearby bus stop (one of the highest usage stops in the Yarra Ranges)





Bus Services

The following services are proposed to improve coverage, service levels and reduce the need for car travel and parking for the community and visitors and reduce unnecessary travel kilometres for bus providers.

FlexiRide: Mount Dandenong (RidgeWalk)

12-month pilot program to trial an On-Demand or FlexiRide bus services to serve the Belgrave, Tecoma, Upwey and Belgrave South communities and across Mt Dandenong by reallocating existing Routes 694, 696, 697 and 699 and extending the service to also operate on the weekend.

Tourism is vital across the Dandenong Ranges and is expected to increase significantly with the delivery of the Ridgewalk network of 40km of trails and paths across Mount Dandenong. A FlexiRide service would enable visitors to access the trails from Belgrave instead of driving and parking in townships and National Parks which have limited parking facilities.

FlexiRide: Healesville and Chum Creek

12-month pilot program to trial an On-Demand or FlexiRide bus service to the Healesville and Chum Creek area.

The Department of Transport are currently undertaking a review of Bus Routes in the Upper Yarra Region. Route 687 is proposed for removal, along with the realignment of some services along Maroondah Highway. This would reduce the proportion of the community that is able to access a bus service within 400 meters. As such, Council seeks the provision of a FlexiRide service to cover the Healesville and Chum Creek area to accommodate regular users as well as major developments along Maroondah Highway and aged care residences between Healesville – Koo Wee Rup Road and the town centre.

Increased Frequency and Express Services: Chirnside Park to Healesville, and Lilydale to Warburton

12-month pilot program to trial increased frequency, express services and extended service span for services along Route 685 between from Chirnside Park to Healesville and Warburton during peak periods, and Route 683 between Lilydale and Warburton.

These services connect to tourism destinations and to train services during peak periods. However, long journey times lowers incentive travellers compared to the benefits of using a private car. Services that are more frequent, run express and/or are extended to better suit user needs, will support stronger uptake by commuters as well as visitors travelling to tourism destinations across Yarra Ranges.



Belgrave Rail line infrastructure works

A range of works is required to ensure that station amenities along the Belgrave line are safe, user friendly and accessible (meet disability access requirements).

- **Upwey station:** create a sheltered area along the platform and re-open the station building with toilet facilities. Additional parking to also be provided by formalising areas along Main Street and providing a pedestrian connection back to the station entrance.
- **Tecoma station:** create a sheltered area along the platform and re-open the station building. Additional parking to also be provided by formalising areas along McNicol Road and upgrading the pedestrian connection to the station.

Canterbury Road Upgrade

Funding and delivery of upgrades to Canterbury Rd, across the 500m between Fussell Road and Liverpool Road, including kerb and channel works.

Brushy Creek Trail

\$200,000 to deliver upgrades to existing trail sections along Brice Avenue and Red Earth Park, connecting the trail from Hull Road to the Hyde Park Walk section of Brushy Creek Trail that is already funded in the 2022/23 Capital Works Program.

Scope of works include path lighting along the 3.5km section of the trail between Maroondah Highway (Green Spine Trail) and Hyde Park Walk.

Morrison Reserve Lighting Project

\$200,000 to redevelop Morrison Reserve, including the provision of a snake run, bike jumps, upgraded district play space, circular walking paths and youth social elements.



SPORT AND RECREATION



Sport and Recreation

Yarra Ranges Council provides a diverse range of community infrastructure assets that directly support healthy and active living, tourism and connection to culture and community. Our assets are enjoyed by millions of people from all over Victoria, Australia and the world.

However, there continues to be a widening gap between available revenue and the infrastructure and asset requirements of our community.

The following projects are priorities for council that can be delivered over the next four years with external funding support.

Further details about Council’s priority projects and long-term infrastructure program can be provided upon request.

Community Sport Pavilions

Priority projects	Location	Cost
Don Road Recreation Reserve Pavilion Redevelopment	Healesville	\$ 5,310,000
Wesburn Community, Recreation and Education Centre	Wesburn	\$ 8,800,000
Long-term program, including priority projects		Total cost
15 x community sports pavilions		\$85,000,000

Temporary Change Facilities

Priority projects	Location	Cost
Seville Temporary Change Facility (relocation)	Seville	\$ 100,000
Woori Yallock Temporary Change Facility (relocation)	Woori Yallock	\$ 100,000
Yarra Glen Temporary Change Facility (new)	Yarra Glen	\$ 360,000
Olinda Temporary Change Facility (new)	Olinda	\$ 480,000
Narre Warren East Temporary Change Facility (new)	Narre Warren East	\$ 480,000
Wesburn Park Temporary Change Facility (relocation)	Wesburn	\$ 100,000
Long-term program, including priority projects		Total cost
9 x temporary change facilities		\$2,400,000



Sportsfields

Priority projects	Location	Cost
Upwey No.1 Oval Redevelopment	Upwey	\$ 875,000
Yarra Hills Mt Evelyn Campus	Mt Evelyn	\$ 875,000
Gateway Oval Redevelopment	Lilydale	\$ 750,000
Upper Yarra Secondary School	Yarra Junction	\$ 625,000
Mt Evelyn Oval No.2 Redevelopment	Mt Evelyn	\$ 375,000
Keith Hume Frazer No.2 Oval Redevelopment	Montrose	\$ 250,000
Long-term program, including priority projects		Total cost
16 x ovals and sporting pitch renewals		\$15,000,000

Lighting

Priority projects	Location	Cost
Menzies Creek Reserve	Menzies Creek	\$275,000
Yarra Glen No. 2 Oval	Yarra Glen	\$240,000
Don Road No.1 Oval	Healesville	\$275,000
Pinks No.1 Oval	Kilsyth	\$240,000
Wandin North Oval	Wandin North	\$240,000
Seville No.1 Oval	Seville	\$275,000
Long-term program, including priority projects		Total cost
17 x lighting projects (new and upgraded)		\$4,000,000



Sports courts

Priority projects	Location	Cost
Upwey South Multipurpose	Upwey	\$420,000
Belgrave Heights Tennis	Belgrave Heights	\$480,000
Lilydale Tennis - Courts	Lilydale	\$420,000
Borthwick Park Multipurpose - Courts	Belgrave	\$420,000
Upwey Tennis - Courts	Upwey	\$420,000
Don Rd Netball Courts & Lighting	Healesville	\$720,000
Long-term program, including priority projects		Total cost
13 x courts (new and upgraded)		\$6,000,000

.....

Cricket facilities

Priority projects	Location	Cost
Belgrave	Belgrave	\$265,000
Kiloran Park	Mooroolbark	\$265,000
Mount Evelyn	Mt Evelyn	\$265,000
Mooroolbark Heights	Mooroolbark	\$265,000
Yarra Junction	Yarra Junction	\$265,000
Wesburn	Wesburn	\$180,000
Long-term program, including priority projects		Total cost
10 x cricket facility renewals		\$3,000,000

.....



Playspaces

Priority projects	Location	Cost
Carmen Reserve Playspace	Lilydale	\$300,000
Glenvalley Reserve Playspace (Local Renewal)	Seville	\$300,000
Wright Avenue Playspace (Local Renewal)	Upwey	\$300,000
Morrison Reserve Playspace (Upgrade from Local to District)	Mt Evelyn	\$600,000
Mount Evelyn Recreation Reserve Playspace (Local Renewal)	Mt Evelyn	\$300,000
Queens Road Reserve Playspace	Lilydale	\$300,000
Long-term program, including priority projects		Total cost
26 x playspaces (new and redeveloped)		\$14,000,000

Dirt Jumps and Tracks

Projects	Location	Cost
Wesburn Pump Track Stage 2 (lighting and technology)	Wesburn	\$400,000
Seal and rebuild Mt Evelyn Pump Track	Mt Evelyn	\$504,000
Yering Mountain Bike loops	Yering	\$144,000
Seville Pump Track	Seville	\$558,000
Kimberley Reserve Pump Track	Chirnside Park	\$480,000
Montrose Brickworks Skills and Dirt Jumps	Chirnside Park	\$480,000
		Total cost
		\$3,000,000



Off-lead dog parks

Projects	Location	Cost
Wesburn Station Off-Lead Dog Park	Wesburn	\$225,000
Don Road Off-Lead Dog Park	Healesville	\$200,000
Wesburn Park Off-Lead Dog Park	Wesburn	\$150,000
Yarra Junction Off-Lead Dog Park	Yarra Junction	\$100,000
Wickhams Road Off-Lead Dog Park	Launching Place	\$150,000
		Total cost
		\$825,000

.....

Other

Projects	Location	Cost
Healesville Meeting Place Garden Landscape and Indigenous Art Works	Healesville	\$300,000
Wesburn Equestrian Facility Upgrades	Wesburn	\$980,000
Powelltown Adventure Hub Feasibility Study	Powelltown	\$100,000
Warburton to Walhalla Trail Feasibility Study	Warburton	\$100,000
Yarra Valley Regional Recreation Park Feasibility Study	Coldstream	\$100,000
Karwarra Gardens Education and Community Centre	Kalorama	\$6,000,000
		Total cost
		\$ 7,580,000



Contact Us

Online:

yarraranges.vic.gov.au

In person:

Yarra Ranges Council
PO Box 105
Lilydale VIC 3140

Telephone:

1300 368 333 or 9294 6905
(after hours service available out of
business hours for urgent requests)

Mail:

P.O. Box 105, Anderson Street
Lilydale, VIC 3140

Email:

mail@yarraranges.vic.gov.au

National Relay Service:

133 677 – for callers who have a hearing,
speech or communication impairment
and for Text Telephone or modem callers

1300 555 727 – for callers using Speech
to Speech relay

9658 9461 – Teletypewriter (TTY)

Translation and Interpreting Service:

131 450 – Translating and Interpreting
Services (TIS) National. An interpreting
service is available if required.

An accessible version of this publication
is available upon request.

