



Legend

- Warburton Tracks and Trails
- Road
- LGA Boundary

Map: PS114527_GIS_009_A2	Author: AS
Date: 10/12/2019	Approved by: -

1:300,000

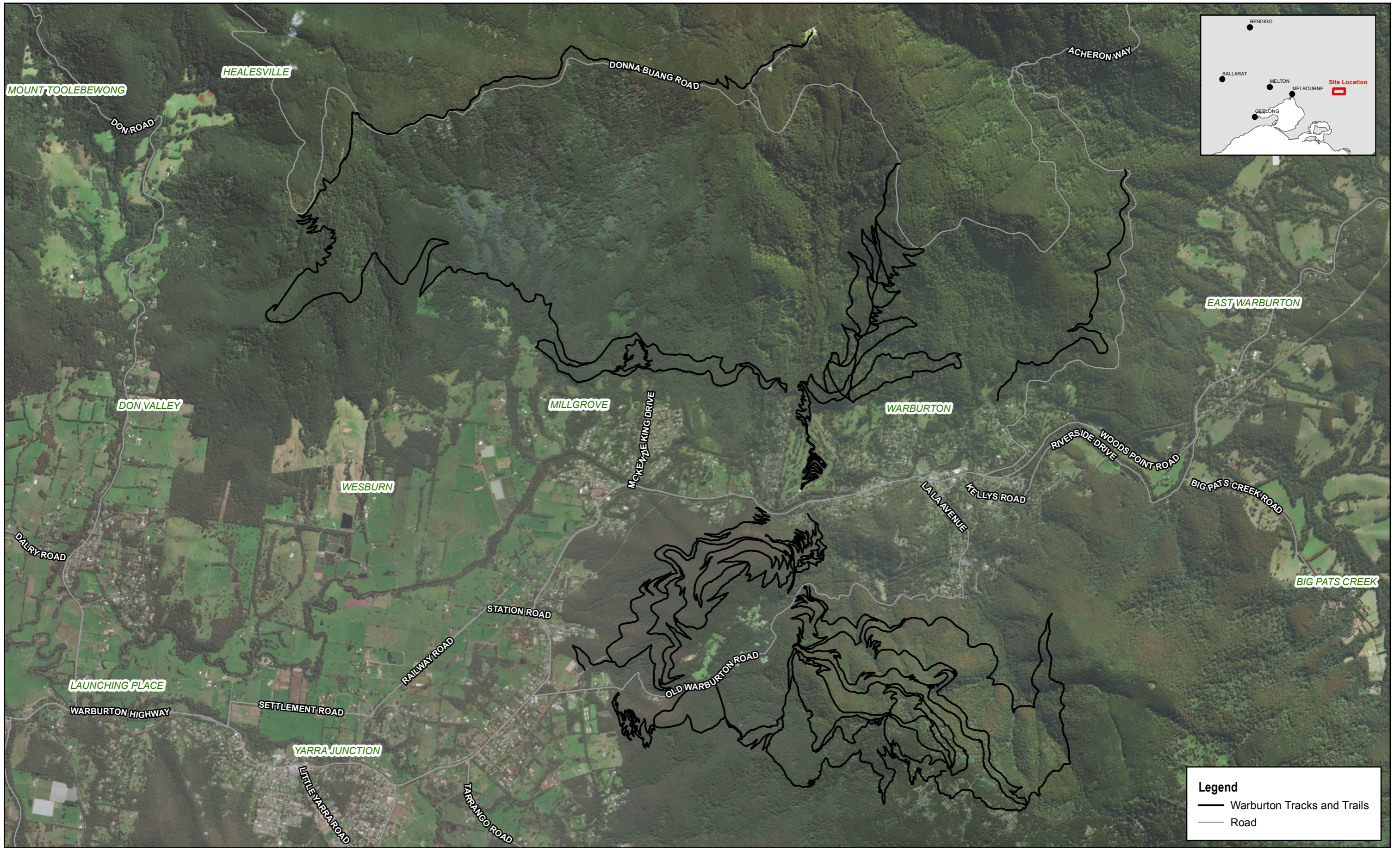
Coordinate system: GDA 1994 MGA Zone 55
 Scale ratio correct when printed at A3

PRELIMINARY

Warburton Mountain Bike Destination

Figure 9
Warburton Tracks and Trails in relation to Melbourne CBD

© WSP Australia Pty Ltd ("WSP") Copyright in the drawings, information and data recorded ("the information") is the property of WSP. This document and the information are solely for the use of the authorised recipient and this document may not be used, copied or reproduced in whole or part for any purpose other than that which it was supplied by WSP. WSP makes no representation, undertakes no duty and accepts no responsibility to any third party who may use or rely upon this document or the information. NCSI Certified Quality System to ISO 9001. © APPROVED FOR AND ON BEHALF OF WSP Australia Pty Ltd.



Map: PS114527_GIS_008_A2

Author: AS



Date: 10/12/2019

Approved by: -



1:40,000

Data source: Copyright © The State of Victoria, Department of Environment, Land, Water & Planning 2019. Service Layer Credits: Source: Esri, DigitalGlobe, GeoEye, Earthstar Geographics, CNES/Airbus DS, USDA, USGS, AEX, Getmapping, Aerogrid, IGN, IGP, swisstopo, and the GIS User Community

Coordinate system: GDA 1994 MGA Zone 55
Scale ratio correct when printed at A3



PRELIMINARY

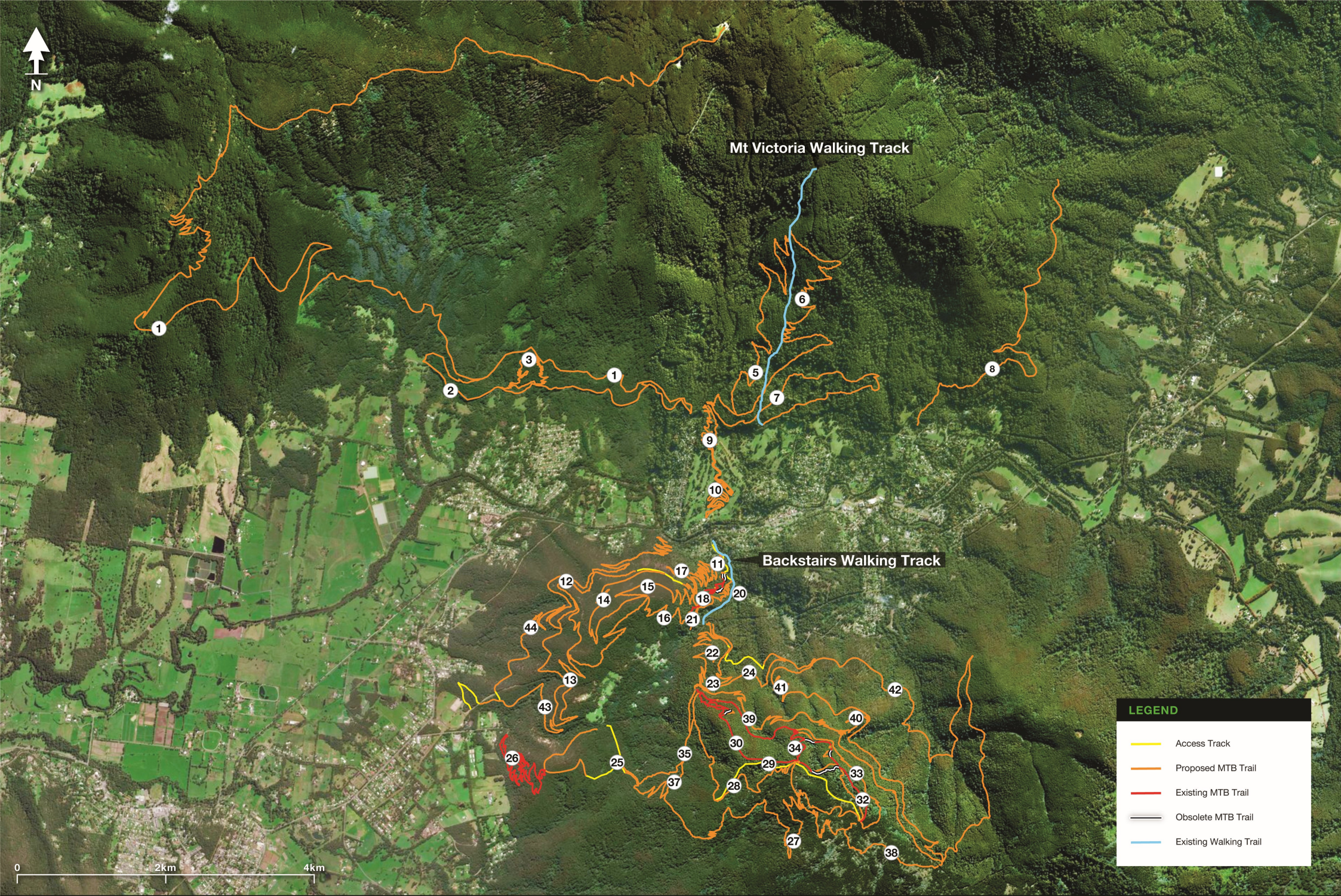
Warburton Mountain Bike Destination

Figure 8
Overview

© WSP Australia Pty Ltd ("WSP") Copyright in the drawings, information and data recorded ("the information") is the property of WSP. This document and the information are solely for the use of the authorised recipient and this document may not be used, copied or reproduced in whole or part for any purpose other than that which it was supplied by WSP. WSP makes no representation, undertakes no duty and accepts no responsibility to any third party who may use or rely upon this document or the information. NCSI Certified Quality System to ISO 9001. © APPROVED FOR AND ON BEHALF OF WSP Australia Pty Ltd.

\\corp.pbwan.net\ANZ\Projects\PS114527_Warburton_Mountain5_Shared\GIS\54_Production\Maps\PS114527_GIS_008_A2.mxd

www.wsp.com



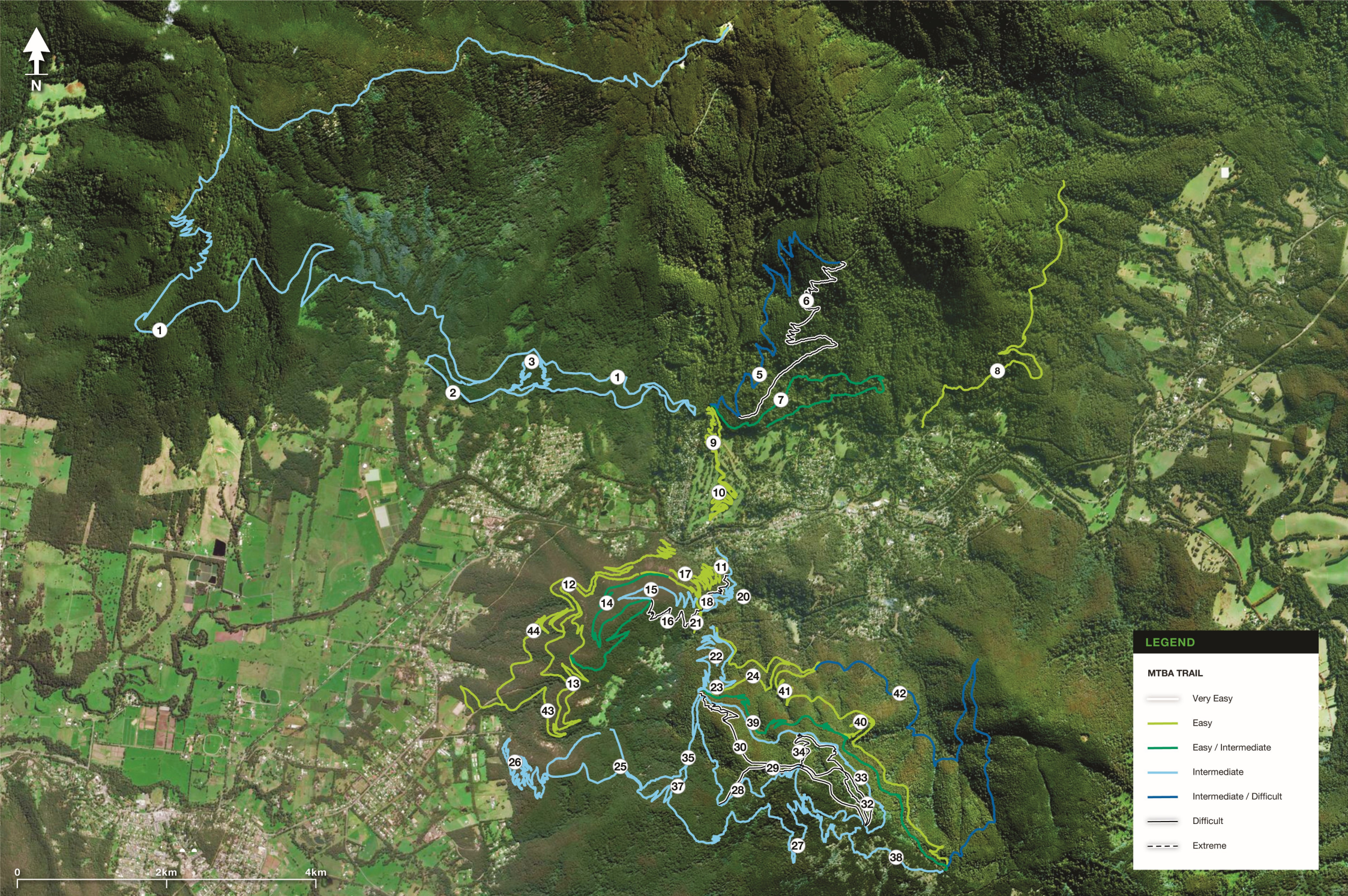
Mt Victoria Walking Track

Backstairs Walking Track

LEGEND

- Access Track
- Proposed MTB Trail
- Existing MTB Trail
- Obsolete MTB Trail
- Existing Walking Trail

0 2km 4km

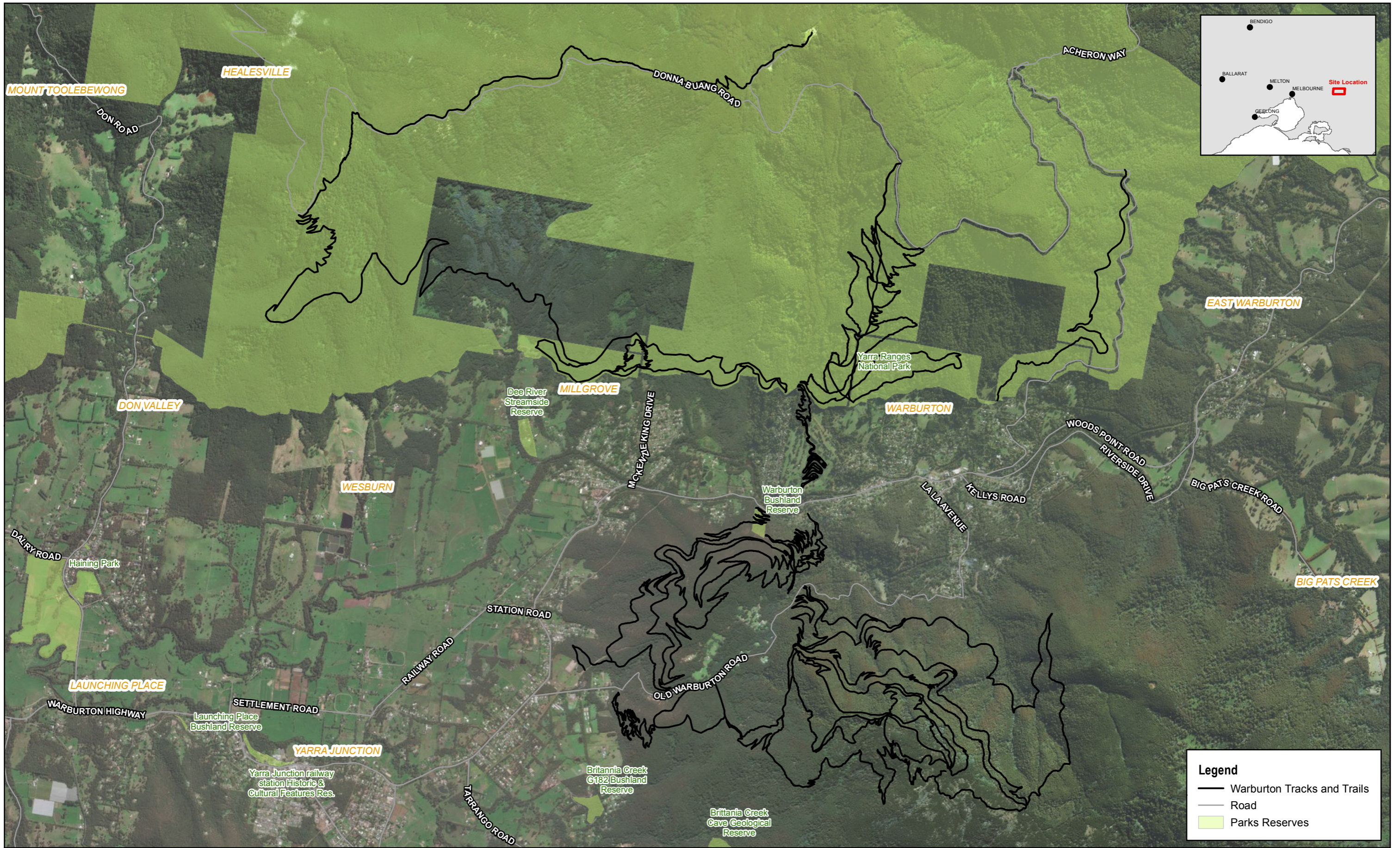


LEGEND

MTBA TRAIL

- Very Easy
- Easy
- Easy / Intermediate
- Intermediate
- Intermediate / Difficult
- Difficult
- Extreme

0 2km 4km



Map: PS114527_GIS_007_A2
 Author: AS
 Date: 10/12/2019
 Approved by: -




1:40,000

Data source: Copyright © The State of Victoria, Department of Environment, Land, Water & Planning 2019. Service Layer Credits: Source: Esri, DigitalGlobe, GeoEye, Earthstar Geographics, CNES/Airbus DS, USDA, USGS, AEX, Getmapping, Aerogrid, IGN, IGP, swisstopo, and the GIS User Community
 Coordinate system: GDA 1994 MGA Zone 55
 Scale ratio correct when printed at A3

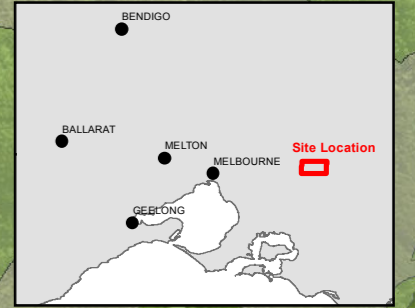
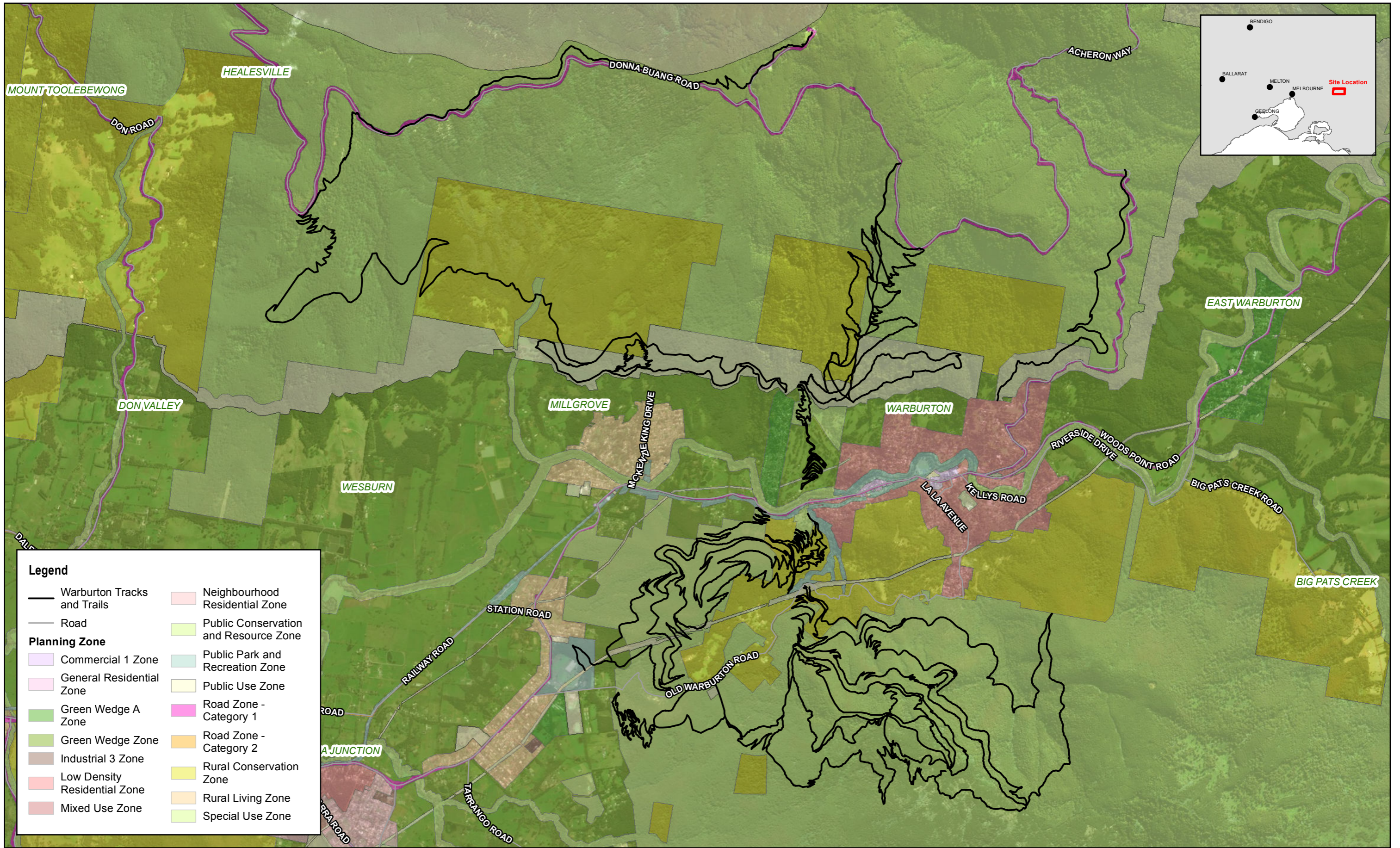
© WSP Australia Pty Ltd ("WSP") Copyright in the drawings, information and data recorded ("the information") is the property of WSP. This document and the information are solely for the use of the authorised recipient and this document may not be used, copied or reproduced in whole or part for any purpose other than that which it was supplied by WSP. WSP makes no representation, undertakes no duty and accepts no responsibility to any third party who may use or rely upon this document or the information. NCSI Certified Quality System to ISO 9001. © APPROVED FOR AND ON BEHALF OF WSP Australia Pty Ltd.



PRELIMINARY

Warburton Mountain Bike Destination

Figure 7
National Parks and State Forests



Map: PS114527_GIS_003_A2
 Date: 10/12/2019
 Author: AS
 Approved by: -




1:40,000

Coordinate system: GDA 1994 MGA Zone 55
 Scale ratio correct when printed at A3

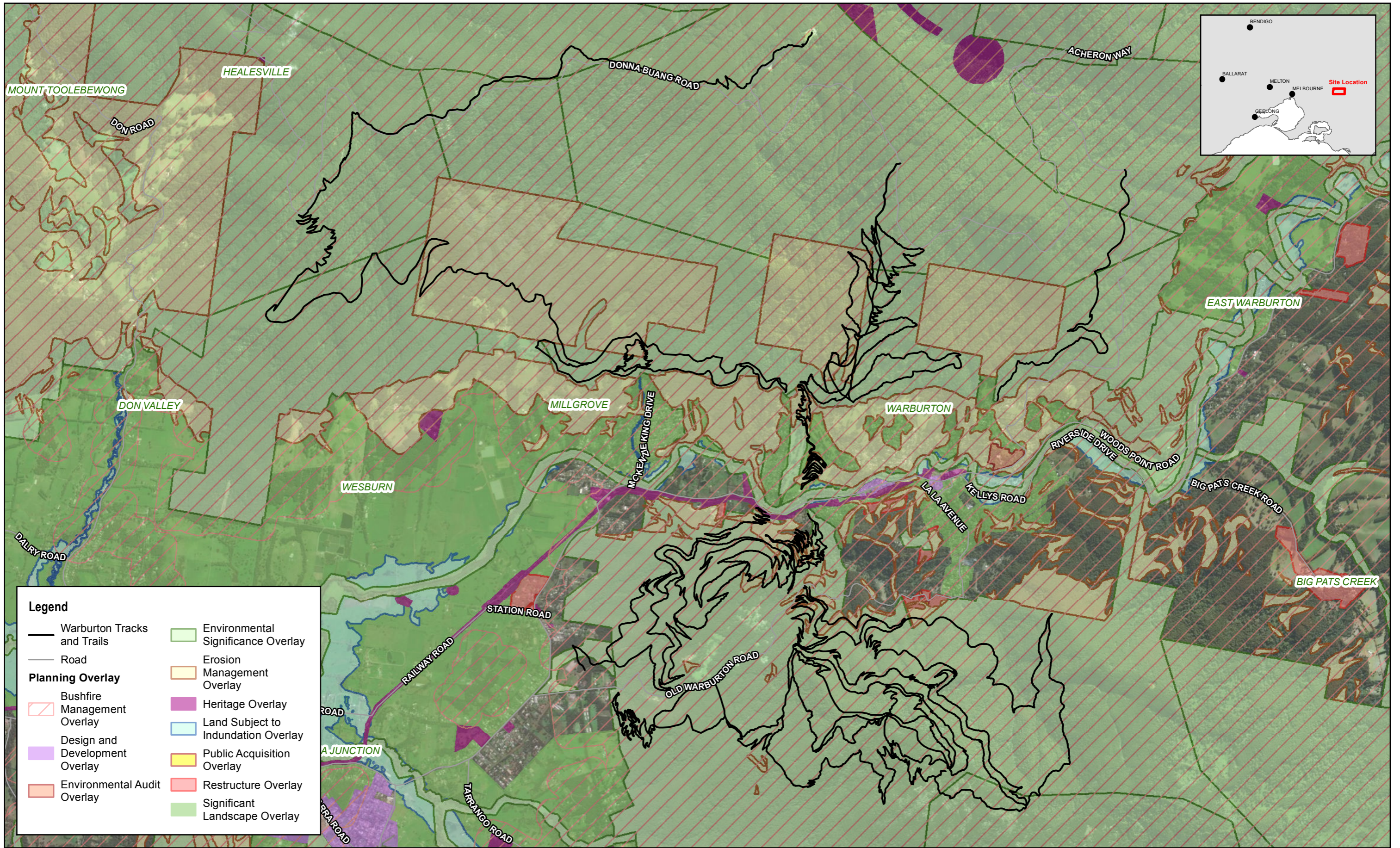
© WSP Australia Pty Ltd ("WSP") Copyright in the drawings, information and data recorded ("the information") is the property of WSP. This document and the information are solely for the use of the authorised recipient and this document may not be used, copied or reproduced in whole or part for any purpose other than that which it was supplied by WSP. WSP makes no representation, undertakes no duty and accepts no responsibility to any third party who may use or rely upon this document or the information. NCSI Certified Quality System to ISO 9001. © APPROVED FOR AND ON BEHALF OF WSP Australia Pty Ltd.



PRELIMINARY

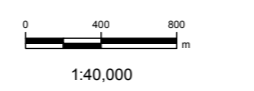
Warburton Mountain Bike Destination

Figure 3
 Planning Zones



Map: PS114527_GIS_004_A2

Author: AS



Date: 10/12/2019

Approved by: -

Coordinate system: GDA 1994 MGA Zone 55
Scale ratio correct when printed at A3

Data source: Copyright © The State of Victoria, Department of Environment, Land, Water & Planning 2019. Service Layer Credits: Source: Esri, DigitalGlobe, GeoEye, Earthstar Geographics, CNES/Airbus DS, USDA, USGS, AEX, Getmapping, Aerogrid, IGN, IGP, swisstopo, and the GIS User Community

© WSP Australia Pty Ltd ("WSP") Copyright in the drawings, information and data recorded ("the information") is the property of WSP. This document and the information are solely for the use of the authorised recipient and this document may not be used, copied or reproduced in whole or part for any purpose other than that which it was supplied by WSP. WSP makes no representation, undertakes no duty and accepts no responsibility to any third party who may use or rely upon this document or the information. NCSI Certified Quality System to ISO 9001. © APPROVED FOR AND ON BEHALF OF WSP Australia Pty Ltd.

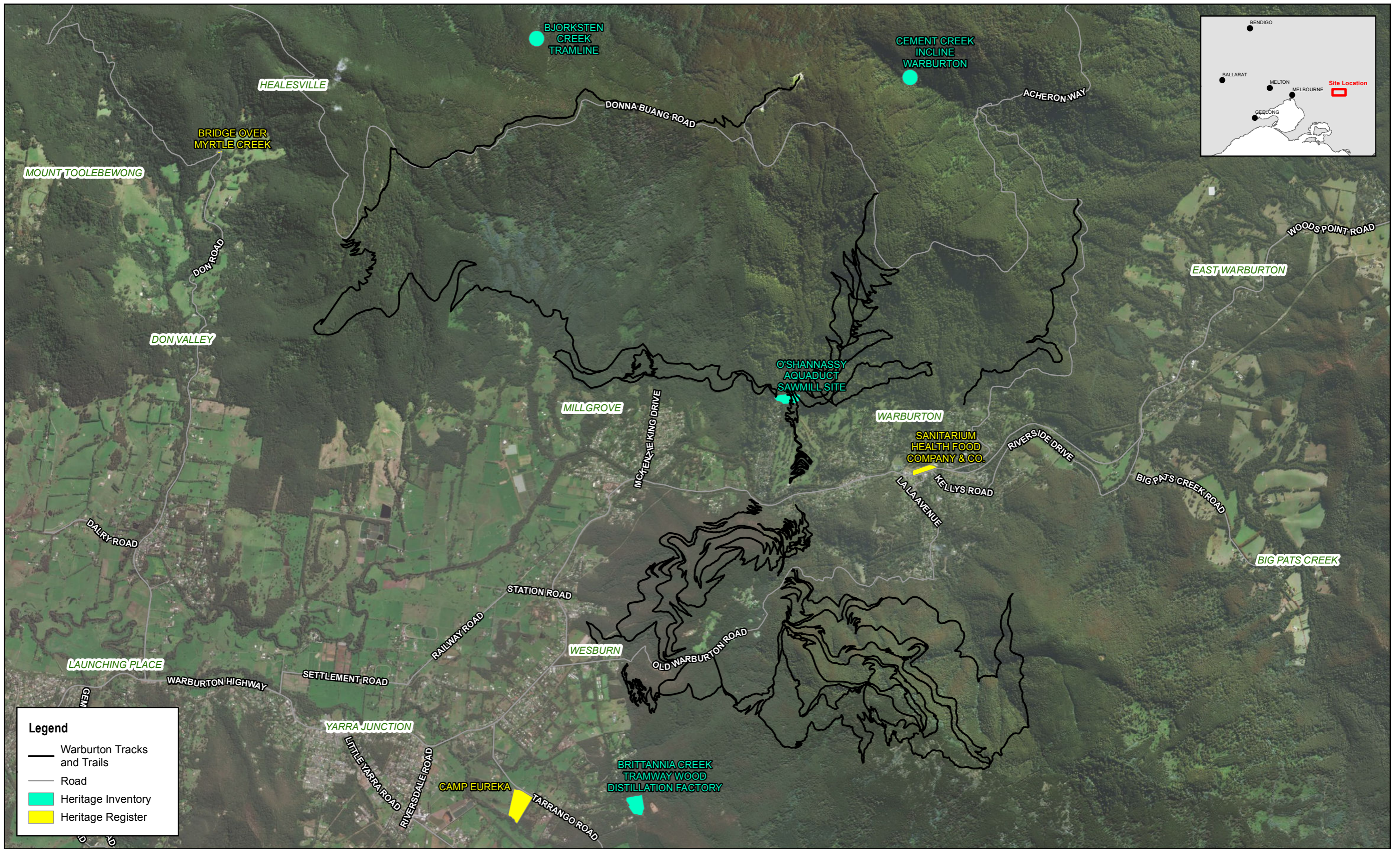
\\corp.pbwan.net\ANZ\Projects\PS114527_Warburton_Mountain5_Shared\GIS\54_Production\Maps\PS114527_GIS_004_A2.mxd



PRELIMINARY

Warburton Mountain Bike Destination

Figure 4
Planning Overlays

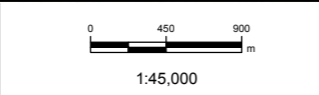


Legend

- Warburton Tracks and Trails
- Road
- Heritage Inventory
- Heritage Register

Map: PS114527_GIS_005_A2
 Date: 10/12/2019

Author: AS
 Approved by: -



Data source: Copyright © The State of Victoria, Department of Environment, Land, Water & Planning 2019. Service Layer Credits: Source: Esri, DigitalGlobe, GeoEye, Earthstar Geographics, CNES/Airbus DS, USDA, USGS, AEX, Getmapping, Aerogrid, IGN, IGP, swisstopo, and the GIS User Community

Coordinate system: GDA 1994 MGA Zone 55
 Scale ratio correct when printed at A3

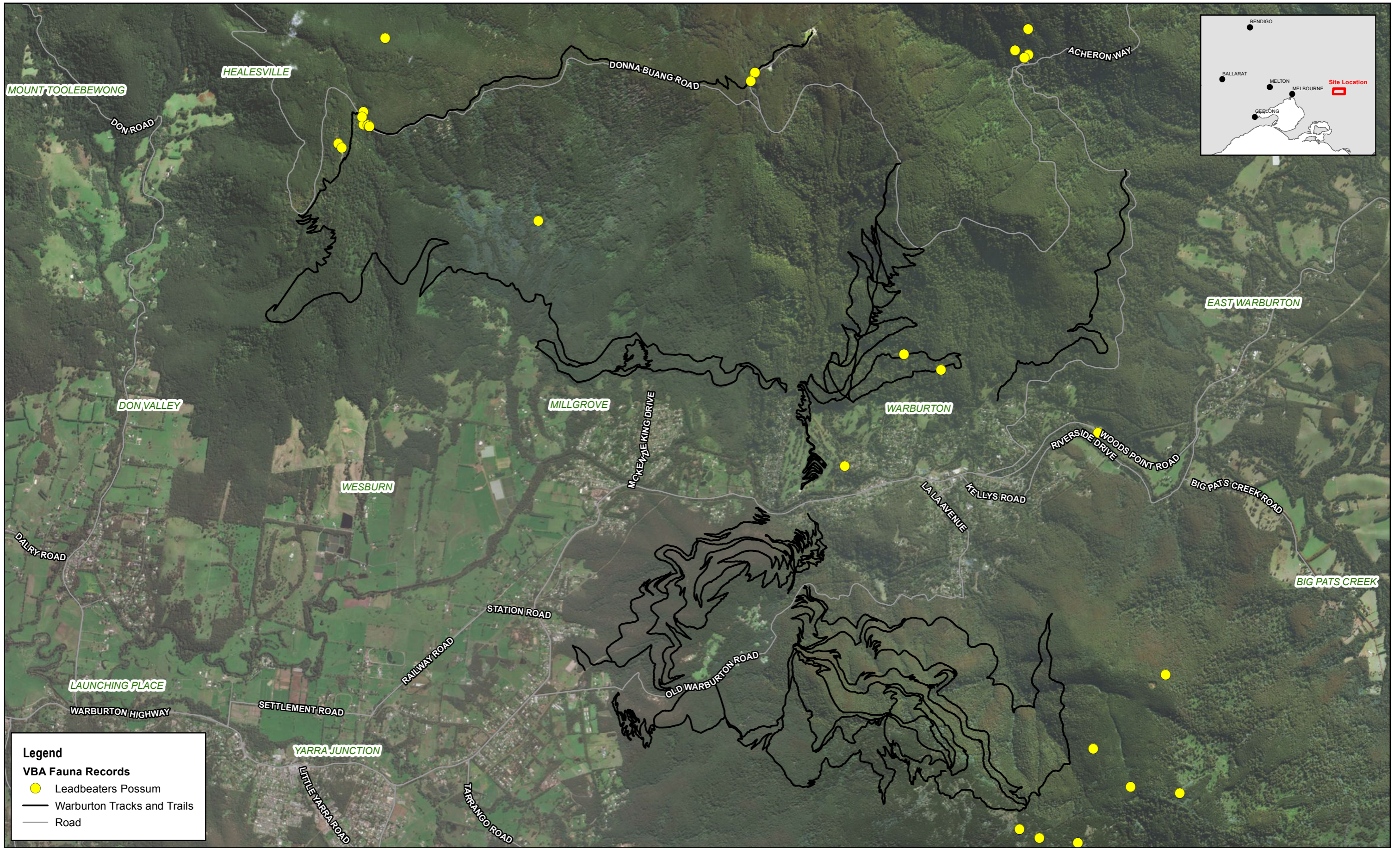
© WSP Australia Pty Ltd ("WSP") Copyright in the drawings, information and data recorded ("the information") is the property of WSP. This document and the information are solely for the use of the authorised recipient and this document may not be used, copied or reproduced in whole or part for any purpose other than that which it was supplied by WSP. WSP makes no representation, undertakes no duty and accepts no responsibility to any third party who may use or rely upon this document or the information. NCSI Certified Quality System to ISO 9001. © APPROVED FOR AND ON BEHALF OF WSP Australia Pty Ltd.



PRELIMINARY

Warburton Mountain Bike Destination

Figure 5
 Historic heritage items listed on the Victorian Heritage Register and Victorian Heritage Inventory



Legend

VBA Fauna Records

- Leadbeaters Possum
- Warburton Tracks and Trails
- Road

Map: PS114527_GIS_010_A2	Author: AS
Date: 10/12/2019	Approved by: -

1:40,000

Data source: Copyright © The State of Victoria, Department of Environment, Land, Water & Planning 2019. Service Layer Credits: Source: Esri, DigitalGlobe, GeoEye, Earthstar Geographics, CNES/Airbus DS, USDA, USGS, AEX, Getmapping, Aerogrid, IGN, IGP, swisstopo, and the GIS User Community

Coordinate system: GDA 1994 MGA Zone 55
Scale ratio correct when printed at A3

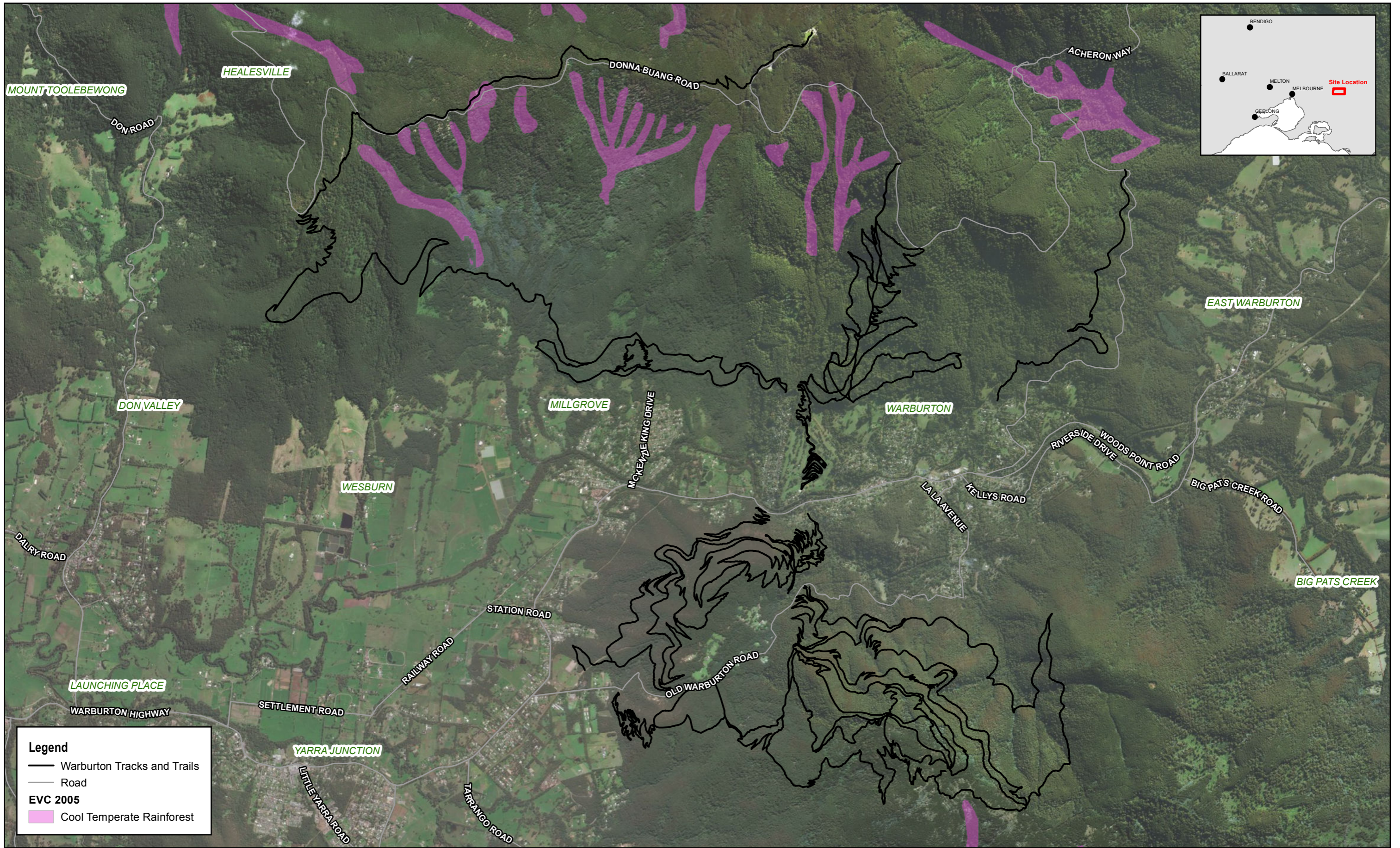
© WSP Australia Pty Ltd ("WSP") Copyright in the drawings, information and data recorded ("the information") is the property of WSP. This document and the information are solely for the use of the authorised recipient and this document may not be used, copied or reproduced in whole or part for any purpose other than that which it was supplied by WSP. WSP makes no representation, undertakes no duty and accepts no responsibility to any third party who may use or rely upon this document or the information. NCSI Certified Quality System to ISO 9001. © APPROVED FOR AND ON BEHALF OF WSP Australia Pty Ltd.



PRELIMINARY

Warburton Mountain Bike Destination

Figure 10
VBA Fauna Records



Legend

- Warburton Tracks and Trails
- Road

EVC 2005

- Cool Temperate Rainforest

Map: PS114527_GIS_002_A2	Author: AS
Date: 10/12/2019	Approved by: -




1:40,000

Data source: Copyright © The State of Victoria, Department of Environment, Land, Water & Planning 2019. Service Layer Credits: Source: Esri, DigitalGlobe, GeoEye, Earthstar Geographics, CNES/Airbus DS, USDA, USGS, AEX, Getmapping, Aerogrid, IGN, IGP, swisstopo, and the GIS User Community

Coordinate system: GDA 1994 MGA Zone 55
Scale ratio correct when printed at A3

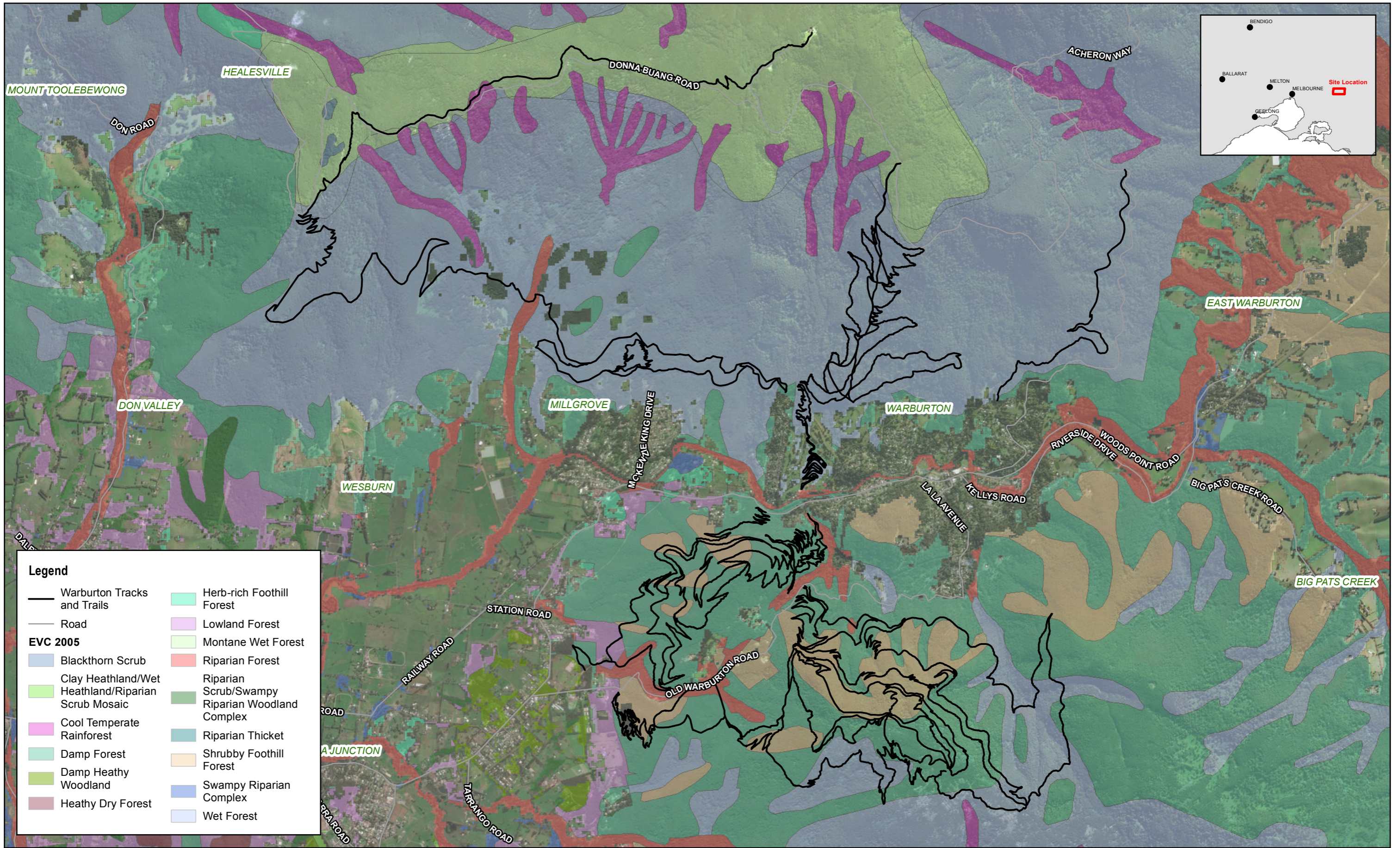


PRELIMINARY

Warburton Mountain Bike Destination

Figure 2
Cool Temperate Rainforest

© WSP Australia Pty Ltd ("WSP") Copyright in the drawings, information and data recorded ("the information") is the property of WSP. This document and the information are solely for the use of the authorised recipient and this document may not be used, copied or reproduced in whole or part for any purpose other than that which it was supplied by WSP. WSP makes no representation, undertakes no duty and accepts no responsibility to any third party who may use or rely upon this document or the information. NCSI Certified Quality System to ISO 9001. © APPROVED FOR AND ON BEHALF OF WSP Australia Pty Ltd.



Legend


— Warburton Tracks and Trails	Herb-rich Foothill Forest
— Road	Lowland Forest
EVC 2005	Montane Wet Forest
Blackthorn Scrub	Riparian Forest
Clay Heathland/Wet Heathland/Riparian Scrub Mosaic	Riparian Scrub/Swampy
Cool Temperate Rainforest	Riparian Woodland Complex
Damp Forest	Riparian Thicket
Damp Heathy Woodland	Shrubby Foothill Forest
Heathy Dry Forest	Swampy Riparian Complex
	Wet Forest

Map: PS114527_GIS_001_A2 Author: AS
 Date: 10/12/2019 Approved by: -




1:40,000

Data source: Copyright © The State of Victoria, Department of Environment, Land, Water & Planning 2019. Service Layer Credits: Source: Esri, DigitalGlobe, GeoEye, Earthstar Geographics, CNES/Airbus DS, USDA, USGS, AEX, Getmapping, Aerogrid, IGN, IGP, swisstopo, and the GIS User Community
 Coordinate system: GDA 1994 MGA Zone 55
 Scale ratio correct when printed at A3



PRELIMINARY

Warburton Mountain Bike Destination

Figure 1
Ecological Vegetation Classes

www.wsp.com



Legend

- Warburton Tracks and Trails
- Watercourse

Map: PS114527_GIS_006_A2	Author: AS
Date: 10/12/2019	Approved by: -




1:40,000

Coordinate system: GDA 1994 MGA Zone 55
Scale ratio correct when printed at A3

© WSP Australia Pty Ltd ("WSP") Copyright in the drawings, information and data recorded ("the information") is the property of WSP. This document and the information are solely for the use of the authorised recipient and this document may not be used, copied or reproduced in whole or part for any purpose other than that which it was supplied by WSP. WSP makes no representation, undertakes no duty and accepts no responsibility to any third party who may use or rely upon this document or the information. NCSI Certified Quality System to ISO 9001. © APPROVED FOR AND ON BEHALF OF WSP Australia Pty Ltd.



PRELIMINARY

Warburton Mountain Bike Destination

Figure 6
Waterways



LEGEND

WARBURTON POINTS OF INTEREST

- Boardwalk
- Bridge

MTBA TRAIL DIFFICULTY RATING

- Very Easy
- Easy
- Easy / Intermediate
- Intermediate
- Intermediate / Difficult
- Difficult
- Extreme

0 2km 4km